

DLD1506-S

15" TFT LCD, LED Backlight 1000nits, XGA (1024x768)

15" TFT LCD panel, built-in 1000 nits high bright for sunlight readable LCD display, high transmittance color filter, high transmission polarizing plates, Low Power Consumption, suitable for kiosk, advertising, POS, marine, transportation, gaming, studio display, gas pump.



KEY FEATURES

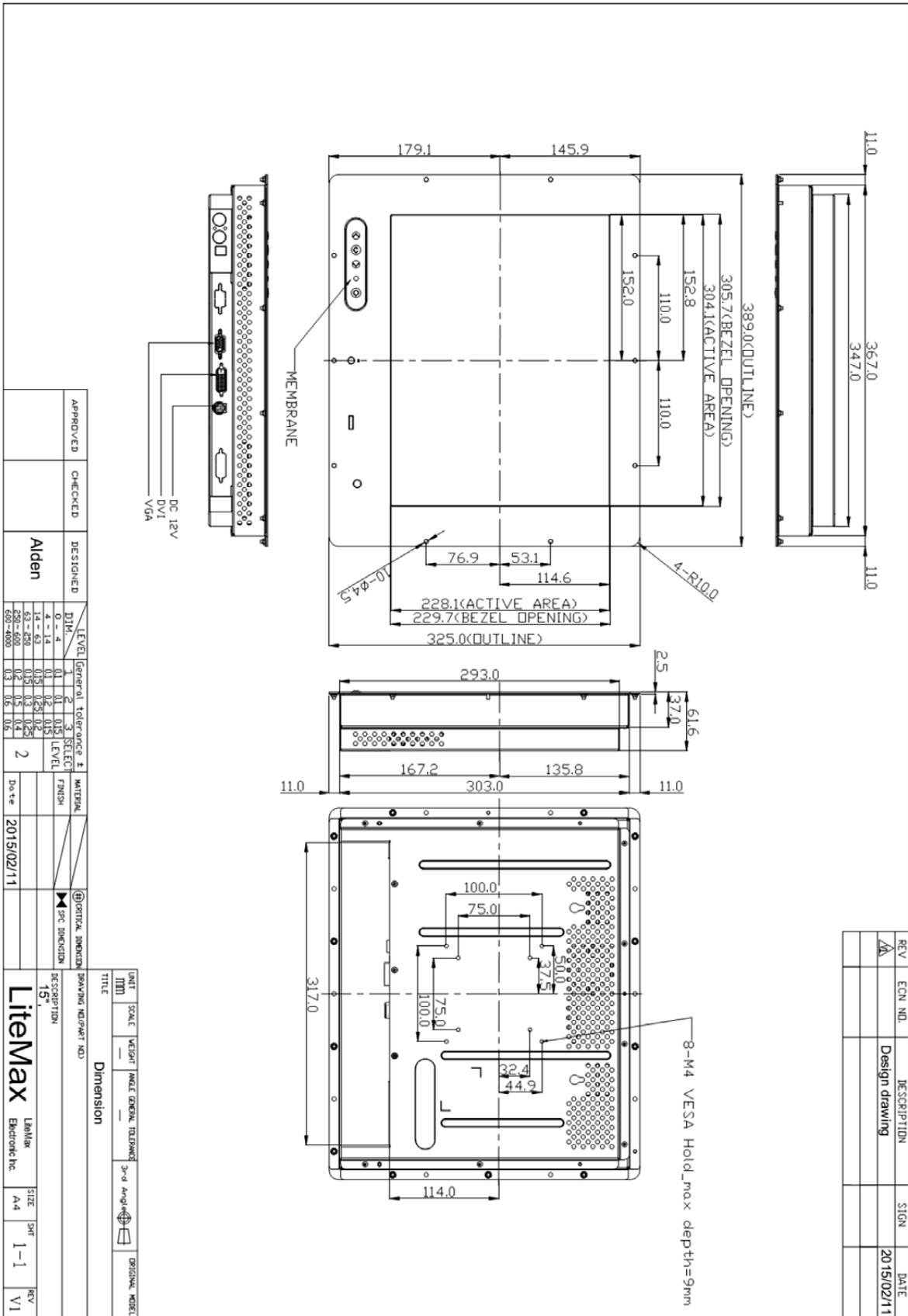
- Ultra Brightness: 1000nits
- LED Backlight
- High Shock & Vibration Resistance
- Low Power Consumption
- High Uniformity
- Low EMI Noise
- Wide Viewing Angle
- Wide Operation temperature
- Life Expectancy

SPECIFICATIONS

Model No.	DLD1506-S
Description	15" TFT LCD, LED Backlight 1000nits,XGA(1024x768)
Display Area (mm)	304.1(H) x 228.1(V) mm
Brightness	1000 cd/m ²
Resolution	1024x768 (XGA)
Contrast Ratio	1700 : 1
Pixel Pitch (mm)	0.297(H) x 0.297(V)
Viewing Angle	85°~85°(H), 85°~85°(V)
Display Colors	16.7M
Response Time (Typical)	35ms
Power Consumption (SSF)	17 W
Dimensions (mm)	389 x 325 x 61.6 (mm)
Weight (Net)	4Kg
LED Driving Board	LID15B
Control Board (Optional)	<input type="checkbox"/> AD6038GD
<input type="checkbox"/> AD6038GD	VGA+DVI
F / R Control Button	<input type="checkbox"/> 4 Key
<input type="checkbox"/> 4 Key	Power Switch, Menu, Select (+,-),
OSD Menu	Brightness, Contrast, H/V Position, Color, Phase, Clock...
Optional	<input type="checkbox"/> AOT <input type="checkbox"/> Touch Screen

*Specifications are subject to change without notice. **All brands or product names are trademarks or registered trademarks of their respective companies.

DLD/DLO = Panel+ LED Driving Board + Control Board + Housing



REV	ECN NO.	DESCRIPTION	SIGN	DATE
A		Design drawing		2015/02/11

APPROVED	CHECKED	DESIGNED	DIM.	LEVEL	General	Tolerance	±	SELECT	MATERIAL	FINISH	VERTICAL DIMENSION	HORIZONTAL DIMENSION
		Alden	0 - 4	1	0.1	0.15	0.2	2				
			4 - 4.3	2	0.15	0.25	0.3	3				
			4.3 - 500	3	0.2	0.3	0.4					
			500 - 600	4	0.3	0.4	0.5					
			600 - 4000	5	0.4	0.5	0.6					

UNIT	SCALE	WEIGHT	ANGLE	GENERAL TOLERANCE	3rd Ang	ORIGINAL MODEL
MM						

TITLE: Dimension

DRAWING NO.(PART NO.): 15"

DESCRIPTION: LiteMax

DATE: 2015/02/11

SIZE: A4

SHEET: 1-1

REV: V1