

DLF0868 / DLH0868

8.4" TFT LCD, LED Backlight 1600nits, SVGA (800x600)

8.4" TFT LCD panel, built-in 1600 nits high bright for sunlight readable LCD display, high transmittance color filter, high transmission polarizing plates, Low Power Consumption, suitable for kiosk, advertising, POS, marine, transportation, gaming, studio display, gas pump.



KEY FEATURES

- Sunlight Readable
- LED Backlight
- High Shock & Vibration Resistance
- Low Power Consumption
- High Uniformity
- Low EMI Noise
- Wide Dimming
- Life Expectancy
- Operation Temperature:
-20°C ~ 70 °C

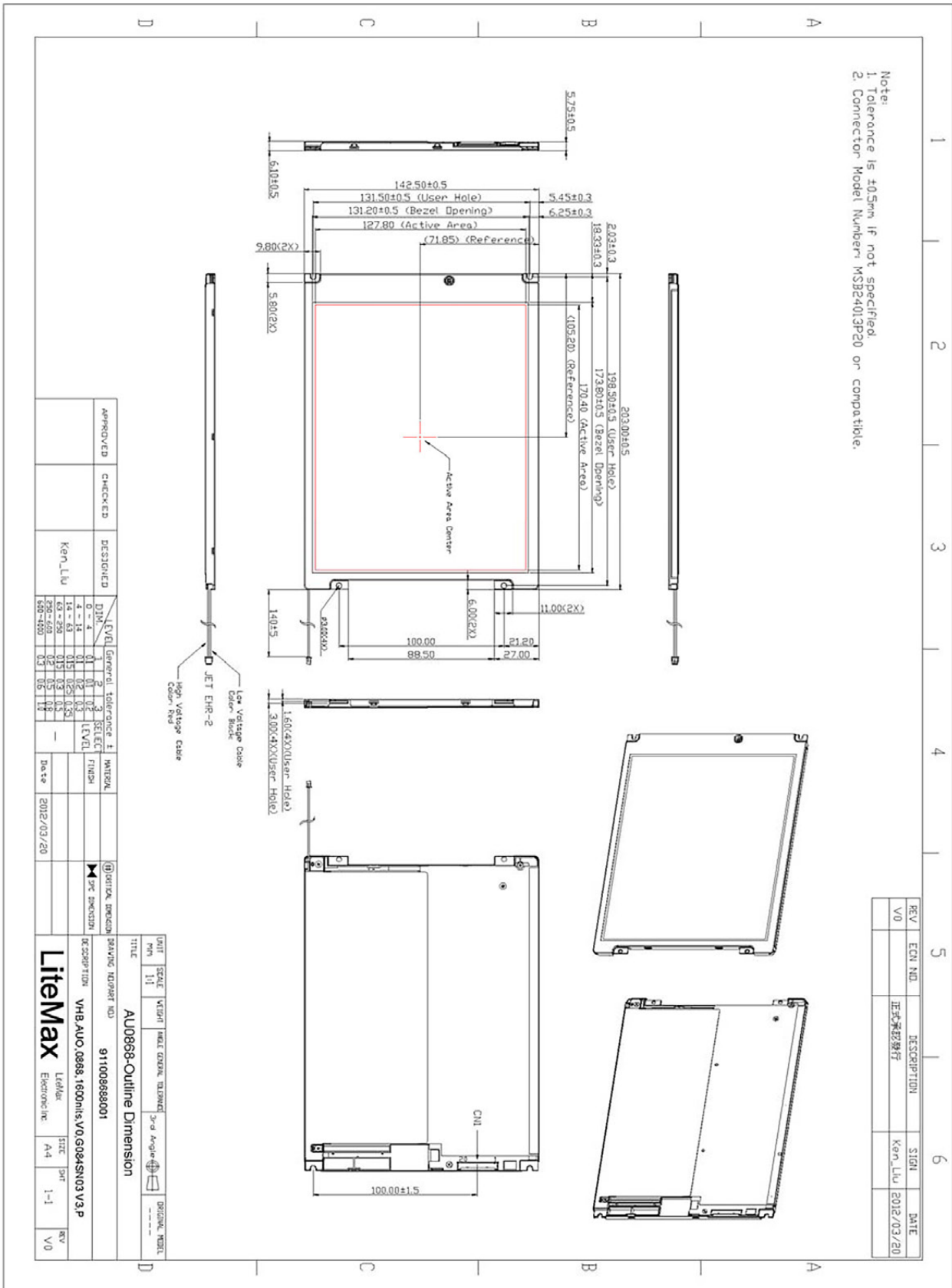
SPECIFICATIONS

Model No.	DLF0868 / DLH0868
Description	8.4" TFT LCD, LED Backlight 1600 nits, SVGA
Display Area (mm)	170.4(H) x 127.8(V)
Brightness	1600 cd/m ²
Resolution	SVGA (800 x 600)
Contrast Ratio	600 : 1
Pixel Pitch (mm)	0.213 x 0.213
Viewing Angle	160°(H), 140°(V)
Display Colors	16.2M
Response Time (Typical)	35ms
Sync	LVDS
Power Consumption	6.8W
Dimensions (mm)	203.0(W) x 142.5(H) x 5.7(D)
Weight (Net)	0.2Kg
LED Driving Board	LID08
Control Board (Optional)	<input type="checkbox"/> AD5621GA <input type="checkbox"/> AD5621GD <input type="checkbox"/> AD2662GDVAR
<input type="checkbox"/> AD5621GA	VGA+Audio
<input type="checkbox"/> AD5621GD	VGA+DVI
<input type="checkbox"/> AD2662GDVAR	VGA+DVI (Optional S□Video/ Component / Audio)
F / R Control Button	<input type="checkbox"/> 4 Key <input type="checkbox"/> 5 Key
<input type="checkbox"/> 4 Key	Power Switch, Menu, Select (+,-),
<input type="checkbox"/> 5 Key	Power Switch, Menu, Select (+,-), Auto
OSD Menu	Brightness, Contrast, H/V Position, Color, Phase, Clock...
Optional	<input type="checkbox"/> AOT <input type="checkbox"/> Touch Screen

*Specifications are subject to change without notice. **All brands or product names are trademarks or registered trademarks of their respective companies.

DLF= Panel+ LED Driving Board

DLH= Panel+ LED Driving Board + Control Board



APPROVED	CHECKED	DESIGNED	DATE
		Ken Liu	2012/03/20

DATE	SCALE	VISION	WELD	QUICK	REVISION	DATE
2012/03/20	1:1					

TITLE	UNIT	SCALE	VISION	WELD	QUICK	REVISION	DATE
AU0868-Outline Dimension	mm	1:1					

DESIGNER	CHECKER	DATE
VHB		2012/03/20

PROJECT NO.	DATE
911008688001	2012/03/20

LEADER	SHEET	TOTAL
Ken Liu	1-1	1-1

REV	DATE
V0	2012/03/20