

# DLF1015-V / DLH1015-V

10.1" TFT LCD, LED Backlight 1000nits, WSVGA

10.1" TFT LCD panel, built-in 1000 nits high bright for sunlight readable LCD display, high transmittance color filter, high transmission polarizing plates, Low Power Consumption, suitable for kiosk, advertising, POS, marline, transportation, gaming, studio display, gas pump.



## KEY FEATURES

- Sunlight Readable
- LED Backlight
- High Shock & Vibration Resistance
- Low Power Consumption
- Wide Operation Temp. (-20°C~70°C)
- High Uniformity
- Low EMI Noise
- Wide Dimming
- Life Expectancy

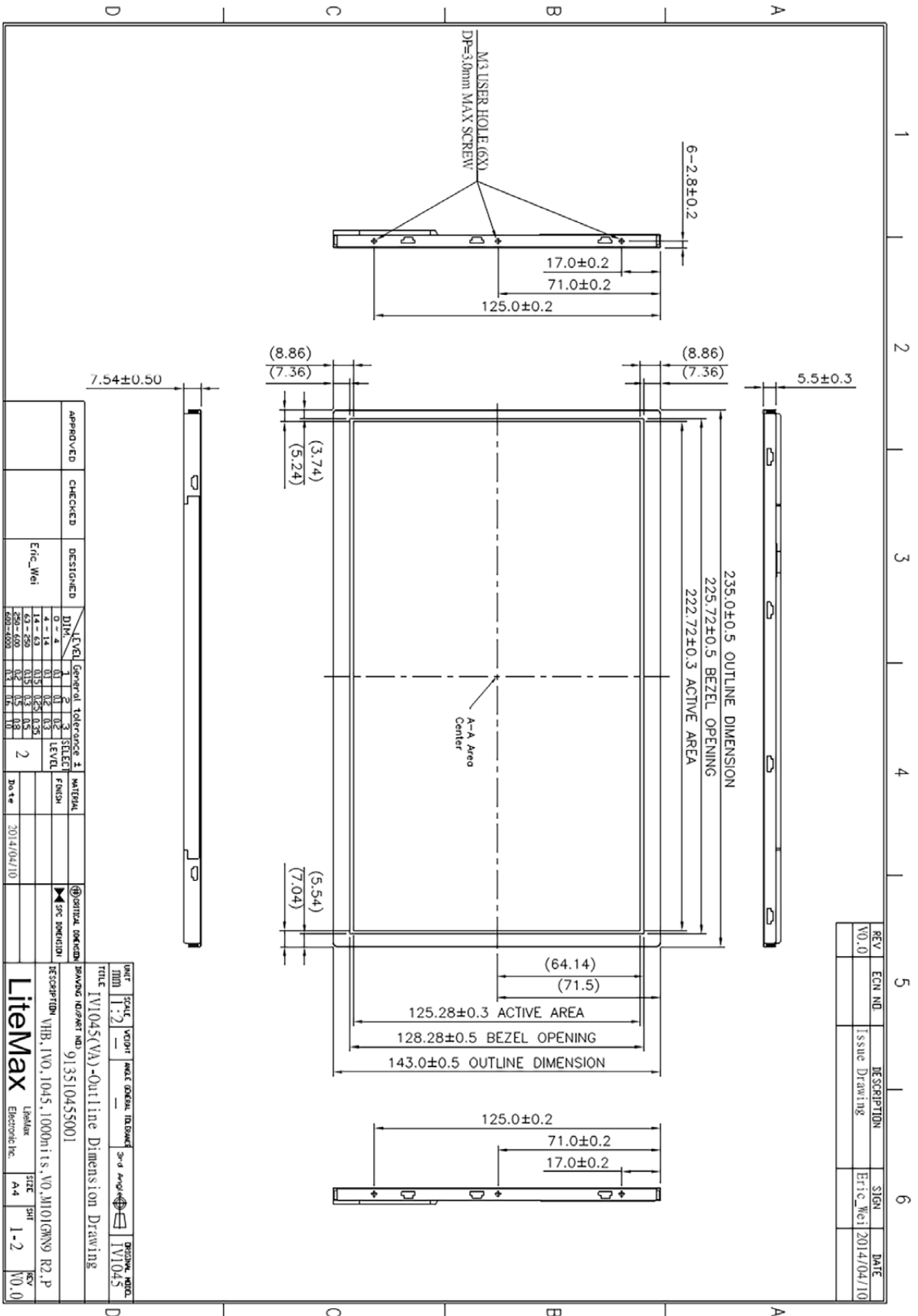
## SPECIFICATIONS

Model No.	DLF1015-V / DLH1015-V
Description	10.1" TFT LCD, LED Backlight 1000nits, WSVGA
Display Area (mm)	222.72 x 125.28 mm
Brightness	1000 cd/m <sup>2</sup>
Resolution	1024 x 600 (WSVGA)
Contrast Ratio	900 : 1
Pixel Pitch (mm)	0.2175(H) x 0.2088(V)
Viewing Angle	+80°~-80°(H), +80°~-80°(V)
Display Colors	16.7M
Response Time (Typical)	16ms
Sync	LVDS
Power Consumption	4.22 W/ 9.22W
Dimensions (mm)	235 x 143 x 7.54
Weight (Net)	290g
LED Driving Board	LID 10A
Control Board (Optional)	<input type="checkbox"/> AD6038G <input type="checkbox"/> AD6038GA
<input type="checkbox"/> AD6038G	VGA
<input type="checkbox"/> AD6038GA	VGA+Audio
F / R Control Button	<input type="checkbox"/> 4 Key <input type="checkbox"/> 5 Key
<input type="checkbox"/> 4 Key	Power Switch, Menu, Select (+,-),
<input type="checkbox"/> 5 Key	Power Switch, Menu, Select (+,-), Auto
OSD Menu	Brightness, Contrast, H/V Position, Color, Phase, Clock...
Optional	<input type="checkbox"/> AOT <input type="checkbox"/> Touch Screen

\*Specifications are subject to change without notice. \*\*All brands or product names are trademarks or registered trademarks of their respective companies.

DLF= Panel+LED Driving Board

DLH= Panel+LED Driving Board+Control Board



REV	ECN NO.	DESCRIPTION	SIGN.	DATE
V0.0		Issue Drawing	Eric_Mei	2014/04/10

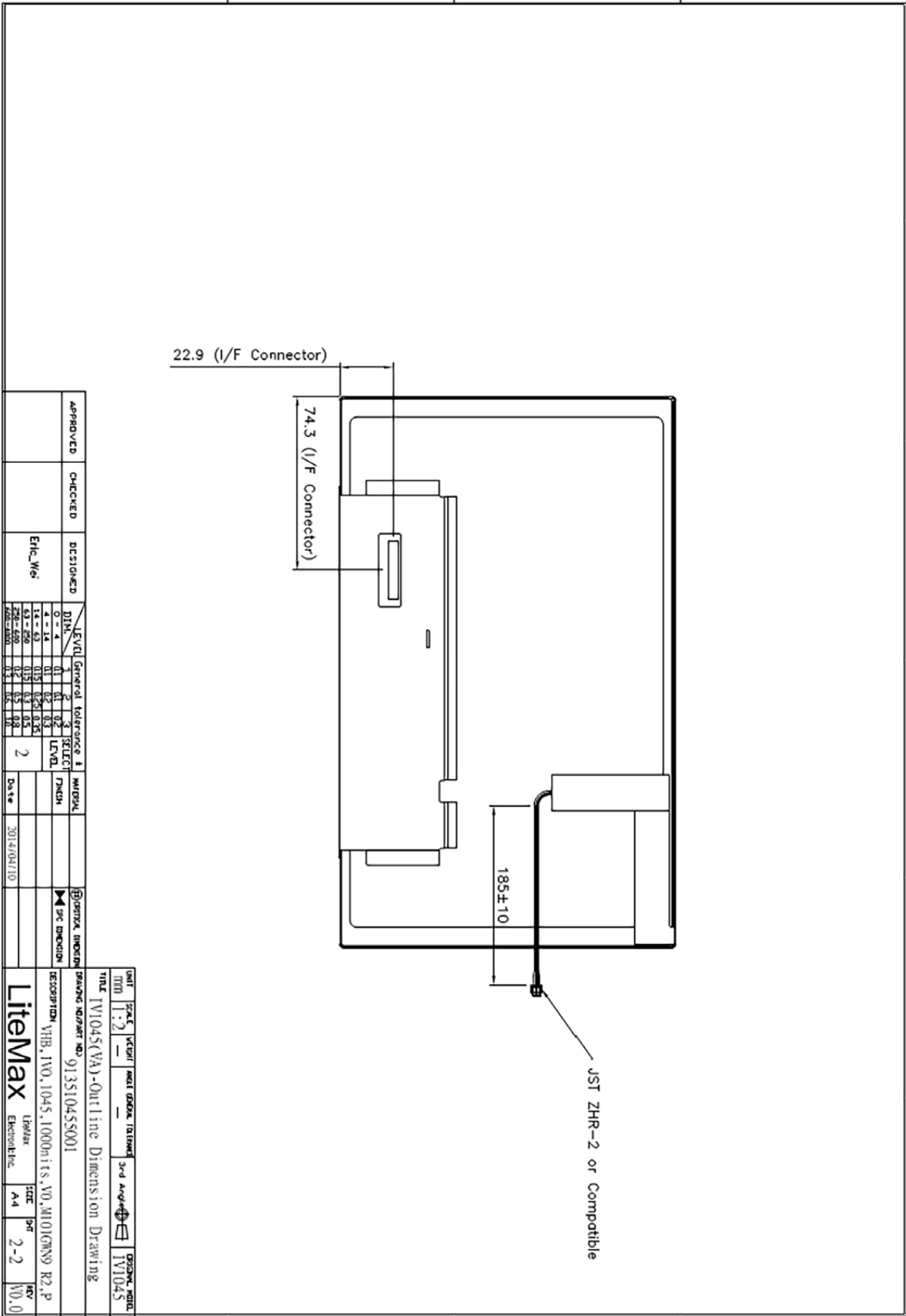
APPROVED	CHECKED	DESIGNED	DRAWN	LEVEL	General Tolerance ±	SELECT LEVEL	MATERIAL	DATE
		Eric_Mei		1	0.1	1		2014/04/10
				2	0.2	2		
				3	0.3	3		
				4	0.4	4		
				5	0.5	5		
				6	0.6	6		
				7	0.7	7		
				8	0.8	8		
				9	0.9	9		
				10	1.0	10		

DATE	SCALE	VECTOR	SCALE GENERAL TOLERANCE	3rd Angle Projection	DESIGN. NO.
2014/04/10	1:1				IV1045

TITLE	BRAND NUMBER NO.	DESCRIPTION	SIZE	SHR	REV
IV1045(VA)-Outline Dimension Drawing	913510455001	VHB, IVO, 1045, 1000units, NO. M10(CRNO) R2, P	A4	1-2	V0.0

A4 207\*297mm

MECHANICAL DRAWING Unit: mm



APPROVED	CHECKED	DESIGNED	LEVEL				General Tolerance			MATERIAL	
			MIN.	1	2	3	1	2	3		
			0 - 4	0.1	0.15	0.2	0.1	0.15	0.2		
		Eric Wei									
			2	DATE		30/4/2010					

DWG NO	1V1045
TITLE	1V1045(VA)-Outline Dimension Drawing
DESCRIPTION	VHB, 1V0, 1045, 1000h1:s, V0, M1010RNO R2, P
DATE	2010/04/10
SCALE	1:1
SHEET	1
TOTAL SHEETS	1
UNIT	mm
DATE	2010/04/10
SCALE	1:1
SHEET	1
TOTAL SHEETS	1
UNIT	mm
DATE	2010/04/10
SCALE	1:1
SHEET	1
TOTAL SHEETS	1
UNIT	mm

**LiteMax**  
Lithium  
Electric Inc.

IDC 97 2-2 W0.0