

DLF1055 / DLH1055 V2

10.4" TFT LCD, LED Backlight 1000nits, XGA

10.4" TFT LCD panel, built-in 1000 nits high bright for sunlight readable LCD display, high transmittance color filter, high transmission polarizing plates, Low Power Consumption, suitable for kiosk, advertising, POS, marine, transportation, gaming, studio display, gas pump.



KEY FEATURES

- Sunlight Readable
- LED Backlight
- High Shock & Vibration Resistance
- Low Power Consumption
- Wide Operation Temp. (-30°C~70°C)
- High Uniformity (90%)
- Low EMI Noise
- Wide Dimming
- Life Expectancy (70,000hrs)

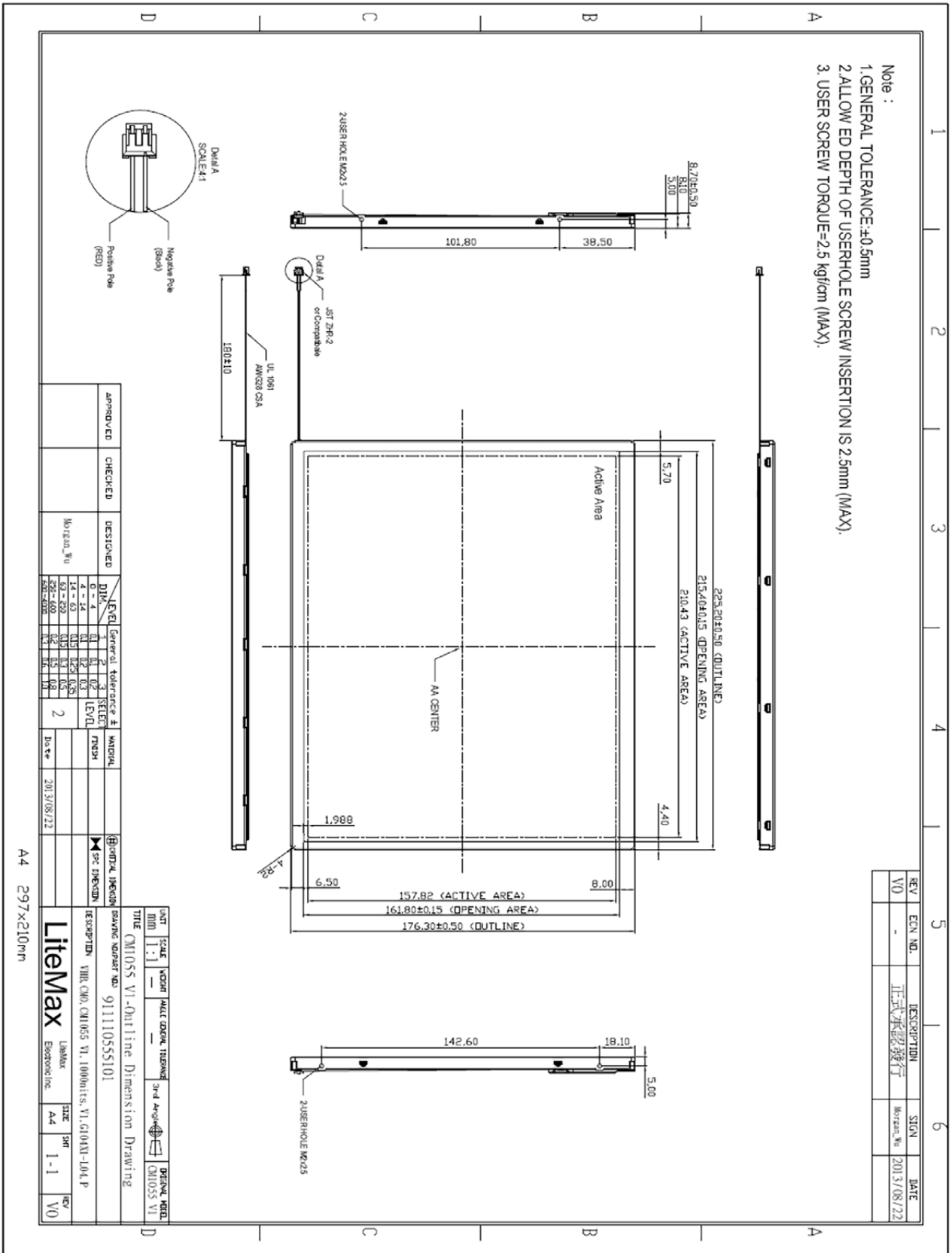
SPECIFICATIONS

Model No.	DLF1055 V2 / DLH1055 V2
Description	10.4" TFT LCD, LED Backlight 1000nits,XGA
Display Area (mm)	210.4 x 157.8 mm
Brightness	1000 cd/m ²
Resolution	1024 x 768 (XGA)
Contrast Ratio	800 : 1
Pixel Pitch (mm)	0.0685(H) x 0.2055(V)
Viewing Angle	+88°~-88°(H), +88°~-88°(V)
Display Colors	16.2M
Response Time (Typical)	40ms
Sync	LVDS
Power Consumption	12W/ 16W
Dimensions (mm)	225.2x176.3x8.7
Weight (Net)	650g
LED Driving Board	LID 10A
Control Board (Optional)	<input type="checkbox"/> AD6038G <input type="checkbox"/> AD6038GA <input type="checkbox"/> AD6038GD <input type="checkbox"/> AD2662GDHVA <input type="checkbox"/> AD2662GDVAR
<input type="checkbox"/> AD6038G	VGA
<input type="checkbox"/> AD6038GA	VGA+Audio
<input type="checkbox"/> AD6038GD	VGA+DVI
<input type="checkbox"/> AD2662GDHVA	VGA+CVBS+S□Video+Audio (Optional DVI / Component /HDMI)
<input type="checkbox"/> AD2662GDVAR	VGA+DVI (Optional S□Video/ Component / Audio)
F / R Control Button	<input type="checkbox"/> 4 Key <input type="checkbox"/> 5 Key
<input type="checkbox"/> 4 Key	Power Switch, Menu, Select (+,-),
<input type="checkbox"/> 5 Key	Power Switch, Menu, Select (+,-), Auto
OSD Menu	Brightness, Contrast, H/V Position, Color, Phase, Clock...
Optional	<input type="checkbox"/> AOT <input type="checkbox"/> Touch Screen

*Specifications are subject to change without notice. **All brands or product names are trademarks or registered trademarks of their respective companies.

DLF= Panel+LED Driving Board

DLH= Panel+LED Driving Board+Control Board

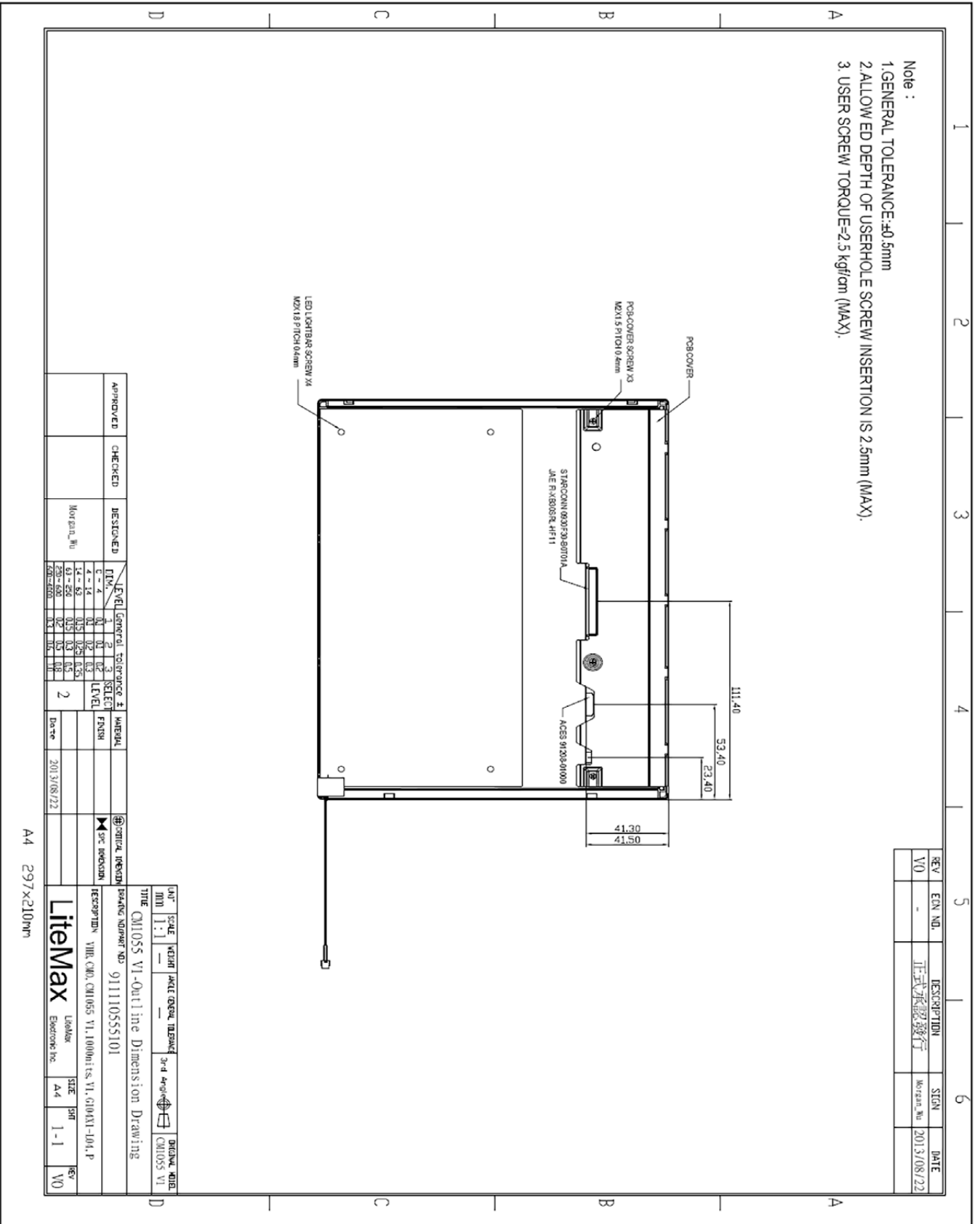


REV	ECN NO.	DESCRIPTION	SIGN	DATE
V0	-	正式承認發行	Morgan, No	2013/08/22

APPROVED	CHECKED	DESIGNED	DATE
		Morgan, No	2013/08/22

A4 297x210mm

SCALE	1:1	DATE	2013/08/22
TITLE	CM1055 VI - Outline Dimension Drawing		
ISSUED BY	Morgan, No		
DESIGNED BY	Morgan, No		
CHECKED BY	Morgan, No		
APPROVED BY	Morgan, No		
DATE	2013/08/22		
SCALE	1:1		
SIZE	A4		
REV	V0		



- Note :
1. GENERAL TOLERANCE: ±0.5mm
 2. ALLOW ED DEPTH OF USERHOLE SCREW INSERTION IS 2.5mm (MAX).
 3. USER SCREW TORQUE=2.5 kgf*cm (MAX).

REV	EN. NO.	DESCRIPTION	STEN	DATE
V0	-	正式承認發行	Mo. En. No.	2013/08/22

APPROVED	CHECKED	DESIGNED	DATE
		Mor. En. No.	2013/08/22

A4 297x210mm

UNIT	SCALE	WEIGHT	DATE	GENERAL	TOLERANCE	3rd Angle	DRIVING	NO. OF
MM	1:1	-	-	-	-	-	CH1055 VI	-

TITLE: CH1055 VI - Outline Dimension Drawing

DESCRIPTION: VIRE. CMO, CH1055 VI, 1000units, VI, G104X1-104, P

9111110555101

LiteMax Labeler
Eledrone Inc.

SIZE: A4
SHEET: 1-1
REV: W0