

DLF/DLH1506-S

15" TFT LCD, LED Backlight 1000nits,XGA(1024x768)

15" TFT LCD panel, built-in 1000 nits high bright for sunlight readable LCD display, high transmittance color filter, high transmission polarizing plates, Low Power Consumption, suitable for kiosk, advertising, POS, marline, transportation, gaming, studio display, gas pump.



KEY FEATURES

- Ultra Brightness: 1000nits
- LED Backlight
- High Shock & Vibration Resistance
- Low Power Consumption
- High Uniformity
- Low EMI Noise
- Wide Viewing Angle
- Wide Operation temperature
- Life Expectancy

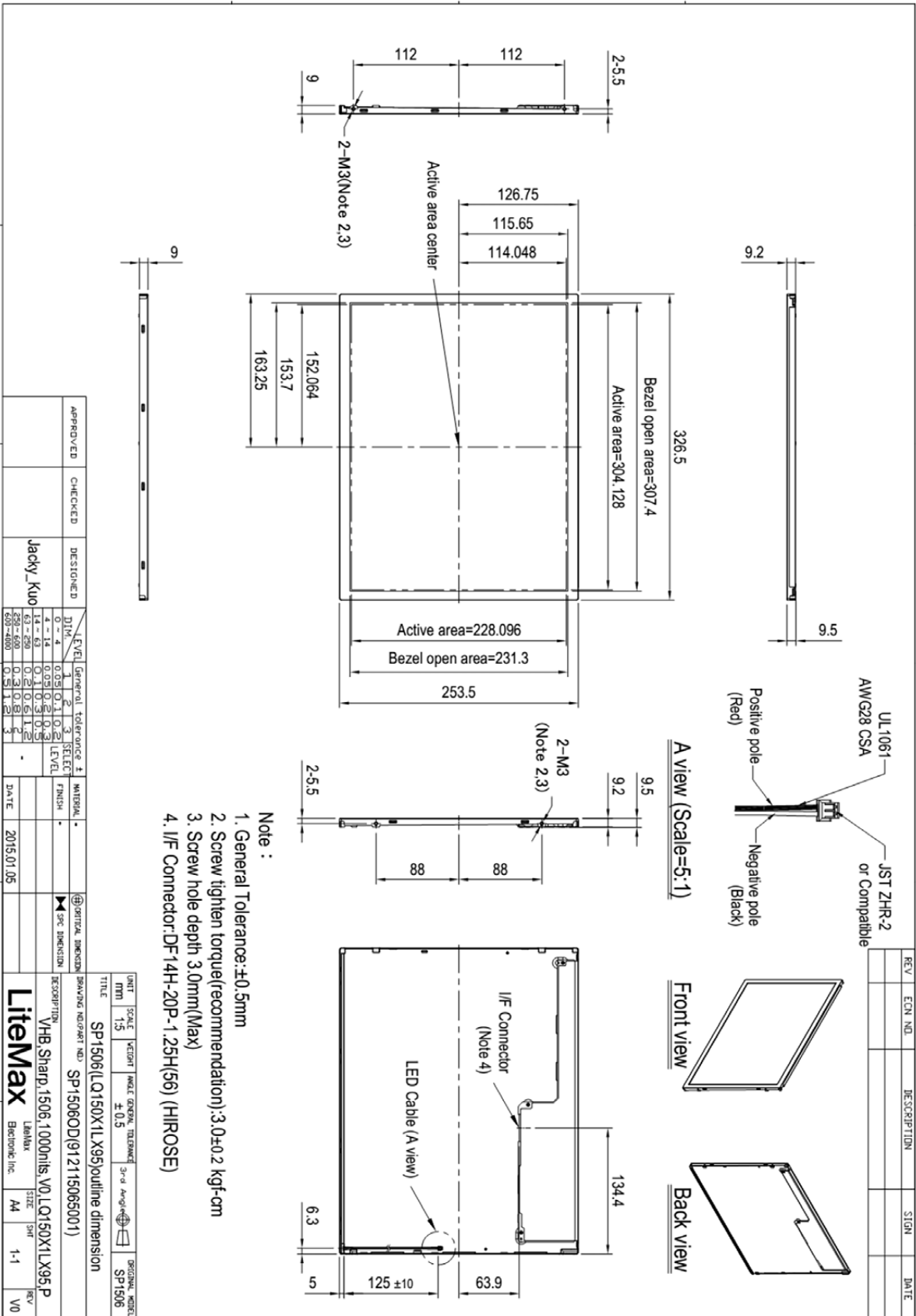
SPECIFICATIONS

Model No.	DLF1506-S / DLH1506-S
Description	15" TFT LCD, LED Backlight 1000nits, XGA (1024x768)
Display Area (mm)	304.1(H) x 228.1(V) mm
Brightness	1000 cd/m ²
Resolution	1024 x 768 (XGA)
Contrast Ratio	1700 : 1
Pixel Pitch (mm)	0.297(H) x 0.297(V)
Viewing Angle	85°~85°(H), 85°~85°(V)
Display Colors	16.7M
Response Time (Typical)	35ms
Power Consumption	13W / 17W
Dimensions (mm)	326.5 x 253.5 x 9.5 (mm)
Weight (Net)	1 kg / 1.1kg
LED Driving Board	LID15B
Control Board (Optional)	<input type="checkbox"/> AD6038GD
<input type="checkbox"/> AD6038GD	VGA+DVI
F / R Control Button	<input type="checkbox"/> 4 Key
<input type="checkbox"/> 4 Key	Power Switch, Menu, Select (+,-),
OSD Menu	Brightness, Contrast, H/V Position, Color, Phase, Clock...
Optional	<input type="checkbox"/> AOT <input type="checkbox"/> Touch Screen

*Specifications are subject to change without notice. **All brands or product names are trademarks or registered trademarks of their respective companies.

DLF= Panel+LED Driving Board

DLH= Panel+LED Driving Board+Control Board



- Note :
1. General Tolerance:±0.5mm
 2. Screw tighten torque(recommendation):3.0±0.2 kgf-cm
 3. Screw hole depth 3.0mm(Max)
 4. I/F Connector:DF14H-20P-1.25H(56) (HIROSE)

APPROVED	CHECKED	DESIGNED	DRAWN	DATE
		Jacky_Kuo		2015/01/05

LEVEL	General Tolerance	±	SELECT LEVEL
0 ~ 4	0.05	0.1	0.2
4 ~ 6	0.05	0.1	0.2
6 ~ 8	0.1	0.15	0.2
8 ~ 10	0.15	0.2	0.25
10 ~ 12	0.2	0.25	0.3
12 ~ 14	0.25	0.3	0.35
14 ~ 16	0.3	0.35	0.4
16 ~ 18	0.35	0.4	0.45
18 ~ 20	0.4	0.45	0.5
20 ~ 22	0.45	0.5	0.55
22 ~ 24	0.5	0.55	0.6
24 ~ 26	0.55	0.6	0.65
26 ~ 28	0.6	0.65	0.7
28 ~ 30	0.65	0.7	0.75
30 ~ 32	0.7	0.75	0.8
32 ~ 34	0.75	0.8	0.85
34 ~ 36	0.8	0.85	0.9
36 ~ 38	0.85	0.9	0.95
38 ~ 40	0.9	0.95	1.0
40 ~ 42	0.95	1.0	1.05
42 ~ 44	1.0	1.05	1.1
44 ~ 46	1.05	1.1	1.15
46 ~ 48	1.1	1.15	1.2
48 ~ 50	1.15	1.2	1.25
50 ~ 52	1.2	1.25	1.3
52 ~ 54	1.25	1.3	1.35
54 ~ 56	1.3	1.35	1.4
56 ~ 58	1.35	1.4	1.45
58 ~ 60	1.4	1.45	1.5
60 ~ 62	1.45	1.5	1.55
62 ~ 64	1.5	1.55	1.6
64 ~ 66	1.55	1.6	1.65
66 ~ 68	1.6	1.65	1.7
68 ~ 70	1.65	1.7	1.75
70 ~ 72	1.7	1.75	1.8
72 ~ 74	1.75	1.8	1.85
74 ~ 76	1.8	1.85	1.9
76 ~ 78	1.85	1.9	1.95
78 ~ 80	1.9	1.95	2.0

UNIT	SCALE	WEIGHT	WALL THICKNESS	3-D MODEL	ORIGINAL MODEL
mm	1:5		±0.5		SP1506

TITLE	DESCRIPTION	REVISION
SP1506(LQ150X1LX95)outline dimension	BROWNING PART NO. SP1506DD(91215065001)	
	VHB, Sharp, 1506, 1000hls V0, LQ150X1LX95 P	
	Libmax	
	Libmax Electronic Inc.	
	A4	
	1-1	
	V0	