

DLF_DLH1568 V3

15" TFT LCD, LED Backlight 1600nits, XGA (1024x768)

15" TFT LCD panel, built-in 1600 nits high bright for sunlight readable LCD display, high transmittance color filter, high transmission polarizing plates, Low Power Consumption, suitable for kiosk, advertising, POS, marline, transportation, gaming, studio display, gas pump.



KEY FEATURES

- Ultra Brightness: 1600nits
- LED Backlight
- XGA(1024x768) High Definition
- High Shock & Vibration Resistance
- Low Power Consumption
- High Uniformity
- Low EMI Noise
- Wide Dimming
- Wide Operation temperature
- Life Expectancy

SPECIFICATIONS

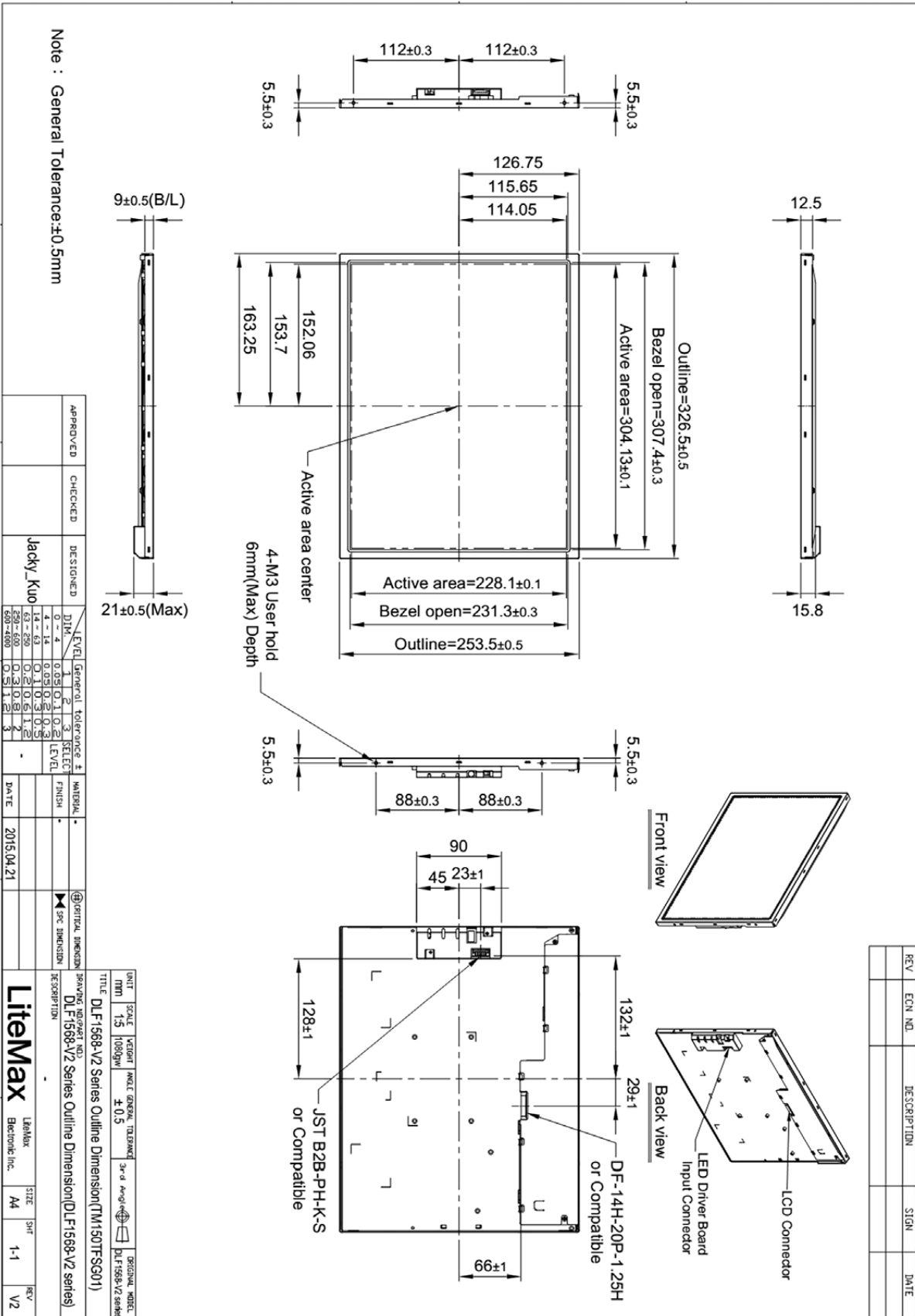
Model No.	DLF1568 V3 / DLH1568 V3
Description	15" TFT LCD, LED Backlight 1600nits, XGA (1024x768)
Display Area (mm)	304.13(H) x 228.1(V) mm
Brightness	1600 cd/m ²
Resolution	1024 x 768 (XGA)
Contrast Ratio	1000 : 1
Pixel Pitch (mm)	0.297(H) x 0.297(V)
Viewing Angle	+80°~-80°(H), +80°~-80°(V)
Color Saturation (NTSC)	69%
Display Colors	16.7M
Response Time (Typical)	8ms
Power Consumption	14W/ 17W
Dimensions (mm)	326.5 x 253.5 x 21 (mm)
Weight (Net)	1.0Kg / 1.1Kg
LED Driving Board	LID15A
Control Board (Optional)	<input type="checkbox"/> AD6038GA <input type="checkbox"/> AD6038GD
<input type="checkbox"/> AD6038GA	VGA+Audio
<input type="checkbox"/> AD6038GD	VGA+DVI
F / R Control Button	<input type="checkbox"/> 4 Key
<input type="checkbox"/> 4 Key	Power Switch, Menu, Select (+,-),
OSD Menu	Brightness, Contrast, H/V Position, Color, Phase, Clock...
Optional	<input type="checkbox"/> AOT <input type="checkbox"/> Touch Screen

*Specifications are subject to change without notice. **All brands or product names are trademarks or registered trademarks of their respective companies.

DLF= Panel+LED Driving Board

DLH= Panel+LED Driving Board+Control Board

MECHANICAL DRAWING Unit: mm



Note : General Tolerance:±0.5mm

APPROVED	CHECKED	DESIGNED	MATERIAL	DATE
		Jacky_Kuo		2015.04.21

LEVEL	General	tolerance	±	SELECT	FINISH
0	1	0.05	1	1	
1	2	0.1	2	2	
2	3	0.15	3	3	
3	4	0.2	4	4	
4	5	0.3	5	5	
5	6	0.4	6	6	
6	7	0.5	7	7	
7	8	0.6	8	8	
8	9	0.8	9	9	
9	10	1.0	10	10	
10	11	1.2	11	11	
11	12	1.5	12	12	
12	13	2.0	13	13	
13	14	2.5	14	14	
14	15	3.0	15	15	
15	16	4.0	16	16	
16	17	5.0	17	17	
17	18	6.0	18	18	
18	19	8.0	19	19	
19	20	10.0	20	20	
20	21	12.0	21	21	
21	22	15.0	22	22	
22	23	20.0	23	23	
23	24	25.0	24	24	
24	25	30.0	25	25	
25	26	40.0	26	26	
26	27	50.0	27	27	
27	28	60.0	28	28	
28	29	80.0	29	29	
29	30	100.0	30	30	
30	31	120.0	31	31	
31	32	150.0	32	32	
32	33	200.0	33	33	
33	34	250.0	34	34	
34	35	300.0	35	35	
35	36	400.0	36	36	

UNIT	SCALE	WEIGHT	ANGLE	GENERAL	TOLERANCE	3rd Angle	ORIGINAL MODEL
MM	1:5	1000g/m		±0.5			DL-F1568-V2 series

TITLE	DESCRIPTION
DL-F1568-V2 Series Outline Dimension(TM1507FSG01)	DL-F1568-V2 Series Outline Dimension(DL-F1568-V2 series)

DATE	DESCRIPTION	REVISION
2015.04.21	Initial Design	1

DATE	DESCRIPTION	REVISION
2015.04.21	Initial Design	1

DATE	DESCRIPTION	REVISION
2015.04.21	Initial Design	1

DATE	DESCRIPTION	REVISION
2015.04.21	Initial Design	1

REV	ECN NO.	DESCRIPTION	SIGN	DATE

LiteMax
Bectronic Inc.

SIZE: A4
SHEET: 1-1
REV: V2