

# DLF1768(WT) / DLH1768(WT)

17" TFT LCD, LED Backlight 1600nits,SXGA(1280x1024)

17" TFT LCD panel, built-in 1600 nits high bright for sunlight readable LCD display, high transmittance color filter, high transmission polarizing plates, Low Power Consumption, suitable for kiosk, advertising, POS, marline, transportation, gaming, studio display, gas pump.



## KEY FEATURES

- Sunlight Readable
- LED Backlight
- SXGA(1280x1024) High Definition
- High Shock & Vibration Resistance
- Low Power Consumption
- High Uniformity
- Low EMI Noise
- Wide Dimming
- Wide Operation temperature
- Life Expectancy

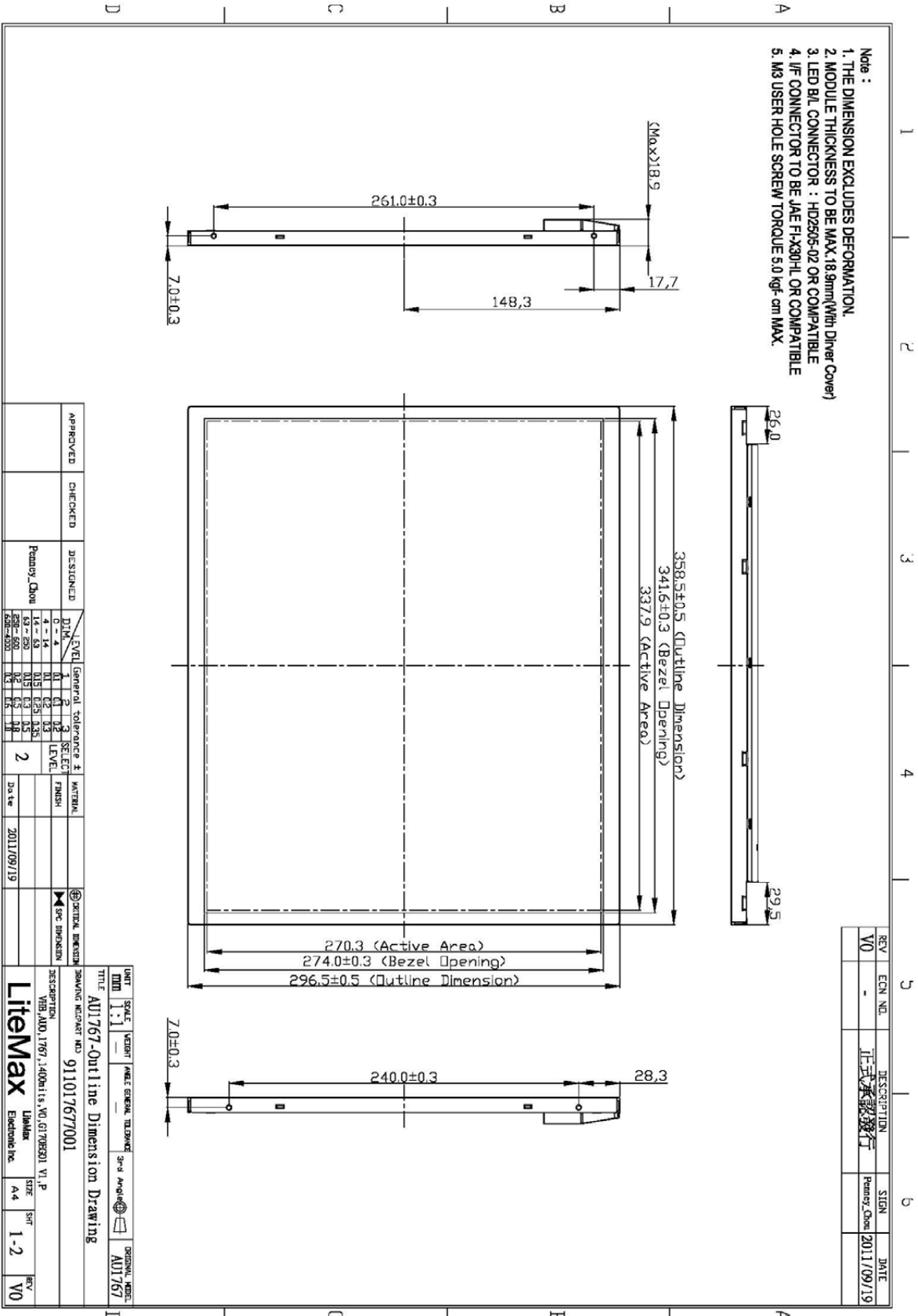
## SPECIFICATIONS

Model No.	DLF1768(WT) / DLH1768(WT)
Description	17" TFT LCD, LED Backlight 1600nits,SXGA(1280x1024)
Display Area (mm)	337.9(H) x 270.3(V) mm
Brightness	1600 cd/m <sup>2</sup>
Resolution	1280x1024 (SXGA)
Contrast Ratio	1000 : 1
Pixel Pitch (mm)	0.264(H) x 0.264(V)
Viewing Angle	+85°~-85°(H), +80°~-80°(V)
Display Colors	16.7M
Response Time (Typical)	30ms
Power Consumption	34.05W
Dimensions (mm)	358.5x296.5x18.9mm
Weight (Net)	2.0Kg
LED Driving Board	LID 17A09
Control Board (Optional)	<input type="checkbox"/> AD6038GA <input type="checkbox"/> AD6038GD <input type="checkbox"/> AD2662GDHVA <input type="checkbox"/> AD2662GDVAR <input type="checkbox"/> AD2662GDHMVAR
<input type="checkbox"/> AD6038GA	VGA+Audio
<input type="checkbox"/> AD6038GD	VGA+DVI
<input type="checkbox"/> AD2662GDHVA	VGA+CVBS+S-Video+Audio (Optional DVI /HDMI)
<input type="checkbox"/> AD2662GDVAR	VGA+DVI (Optional S-Video/ Component / Audio)
<input type="checkbox"/> AD2662GDHMVAR	VGA (Optional DVI / HDMI / S-Video/ Component / Audio)
F / R Control Button	<input type="checkbox"/> 4 Key <input type="checkbox"/> 5 Key
<input type="checkbox"/> 4 Key	Power Switch, Menu, Select (+,-),
<input type="checkbox"/> 5 Key	Power Switch, Menu, Select (+,-), Auto
OSD Menu	Brightness, Contrast, H/V Position, Color, Phase, Clock...
Optional	<input type="checkbox"/> AOT <input type="checkbox"/> Touch Screen

\*Specifications are subject to change without notice. \*\*All brands or product names are trademarks or registered trademarks of their respective companies.

DLF= Panel+LED Driving Board

DLH= Panel+LED Driving Board+Control Board



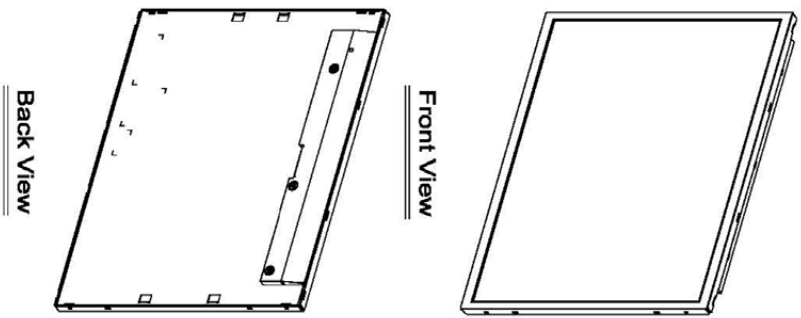
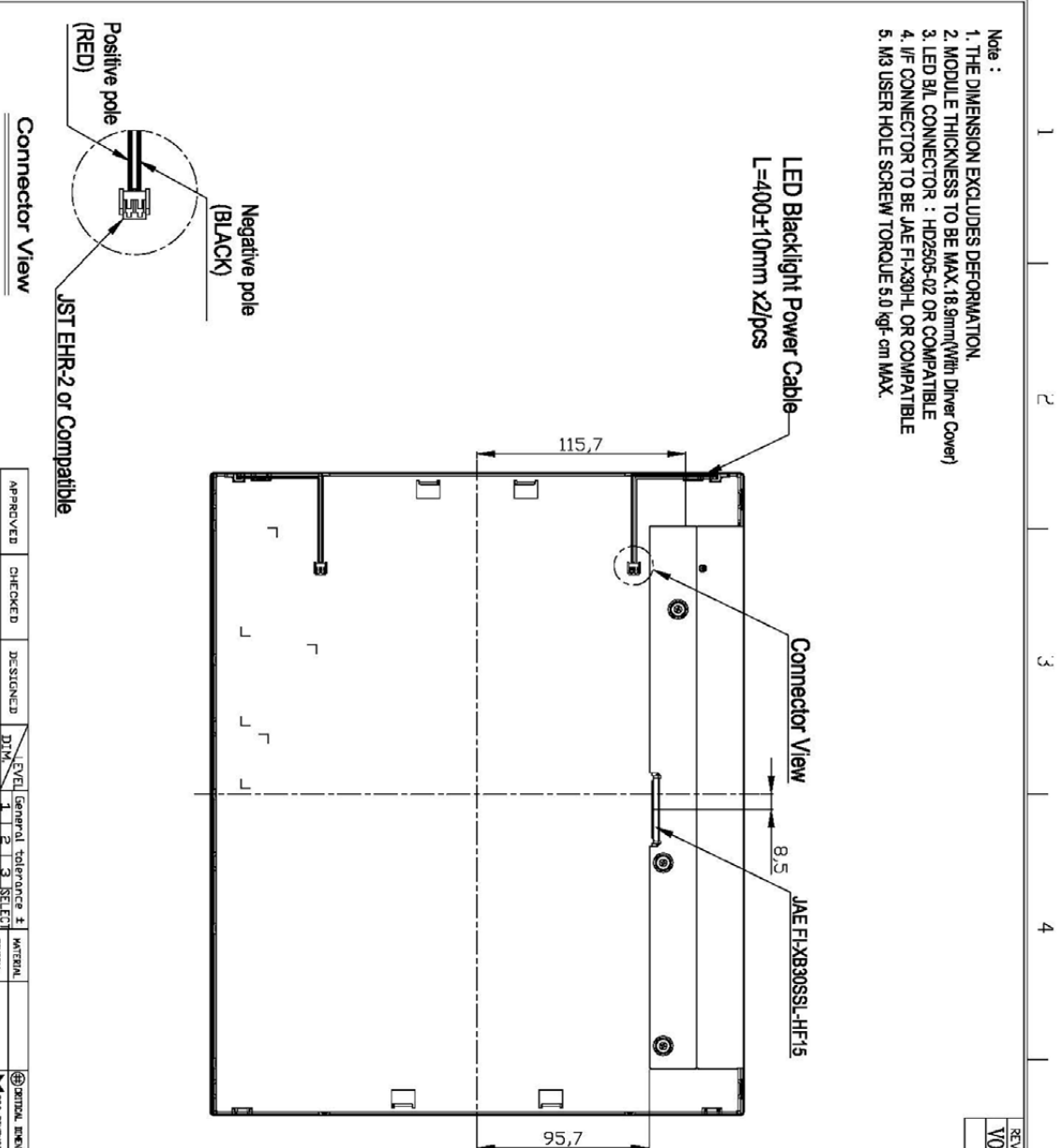
REV	ECN NO.	DESCRIPTION	SIGN	DATE
V0	-	正式承認發行	Penney_Quan	2011/09/19

APPROVED	CHECKED	DESIGNED	LEVEL	GENERAL TOLERANCE ±	MATERIAL
		Penney_Quan	0-4	1	
			4-14	0.1	
			14-20	0.15	
			20-50	0.2	
			50-100	0.3	
			100-400	0.5	
			400-1000	1	

UNIT	SCALE	VELOCITY	MADE GENERAL TOLERANCE	3rd ANGLE	ORIGINAL FILE
MM	1:1				AU1767
TITLE AU1767-Outline Dimension Drawing					
DRAWING NO./PART NO. 911017677001					
DESCRIPTION VIB. AND. 1767, 1400hits, NO. G170R30 V1, P					
Litemax 1767 1400hits					
Litemax Electronics Inc.					
DATE	2011/09/19				
SIZE	A4				
SHR	1-2				
REV	V0				

A4 297X210mm

- Note :
1. THE DIMENSION EXCLUDES DEFORMATION
  2. MODULE THICKNESS TO BE MAX.18.5mm(With Driver Cover)
  3. LED BALL CONNECTOR : HD2505-02 OR COMPATIBLE
  4. I/F CONNECTOR TO BE JAE FI-X30HL OR COMPATIBLE
  5. M3 USER HOLE SCREW TORQUE 5.0 kgf-cm MAX.



REV	ECN NO.	DESCRIPTION	SIGN	DATE
V0	-	正式承認発行	Penney, Chou	2011/09/19

APPROVED	CHECKED	DESIGNED	DATE
		Penney, Chou	2011/09/19

LEVEL	1	2	3	SELECT LEVEL
0 ~ 4	0	0	0	LEVEL
14 ~ 63	0.15	0.25	0.25	
63 ~ 253	0.15	0.3	0.5	
253 ~ 653	0.2	0.5	0.8	
653 ~ 4003	0.3	0.8	1.0	

GENERAL TOLERANCE	MATERIAL
2	

A4 297x210mm

**LiteMax**  
 Electronic Inc.  
 UNIT SCALE: 1:1  
 WEIGHT: ANGEL GENERAL TOLERANCE: 3rd Angle  
 TITLE: AU1767-Outline Dimension Drawing  
 DRAWING NO: 911017677001  
 DESCRIPTION: VHB, AOD, 1767, 1400x115, NO. G1708301 V1.P  
 SIZE: A4  
 SHEET: 2-2  
 REV: V0