

DLF1825 / DLH1825 V2

18.5" Wide TFT LCD, LED Backlight 1000nits, WXGA

18.5" Wide TFT LCD panel, built-in 1000 nits high bright for sunlight readable LCD display, high transmittance color filter, high transmission polarizing plates, Low Power Consumption, suitable for kiosk, advertising, POS, transportation, gaming, studio display, gas pump.



KEY FEATURES

- Sunlight Readable
- LED Backlight
- High Shock & Vibration Resistance
- Low Power Consumption
- High Uniformity
- Low EMI Noise
- Wide Dimming

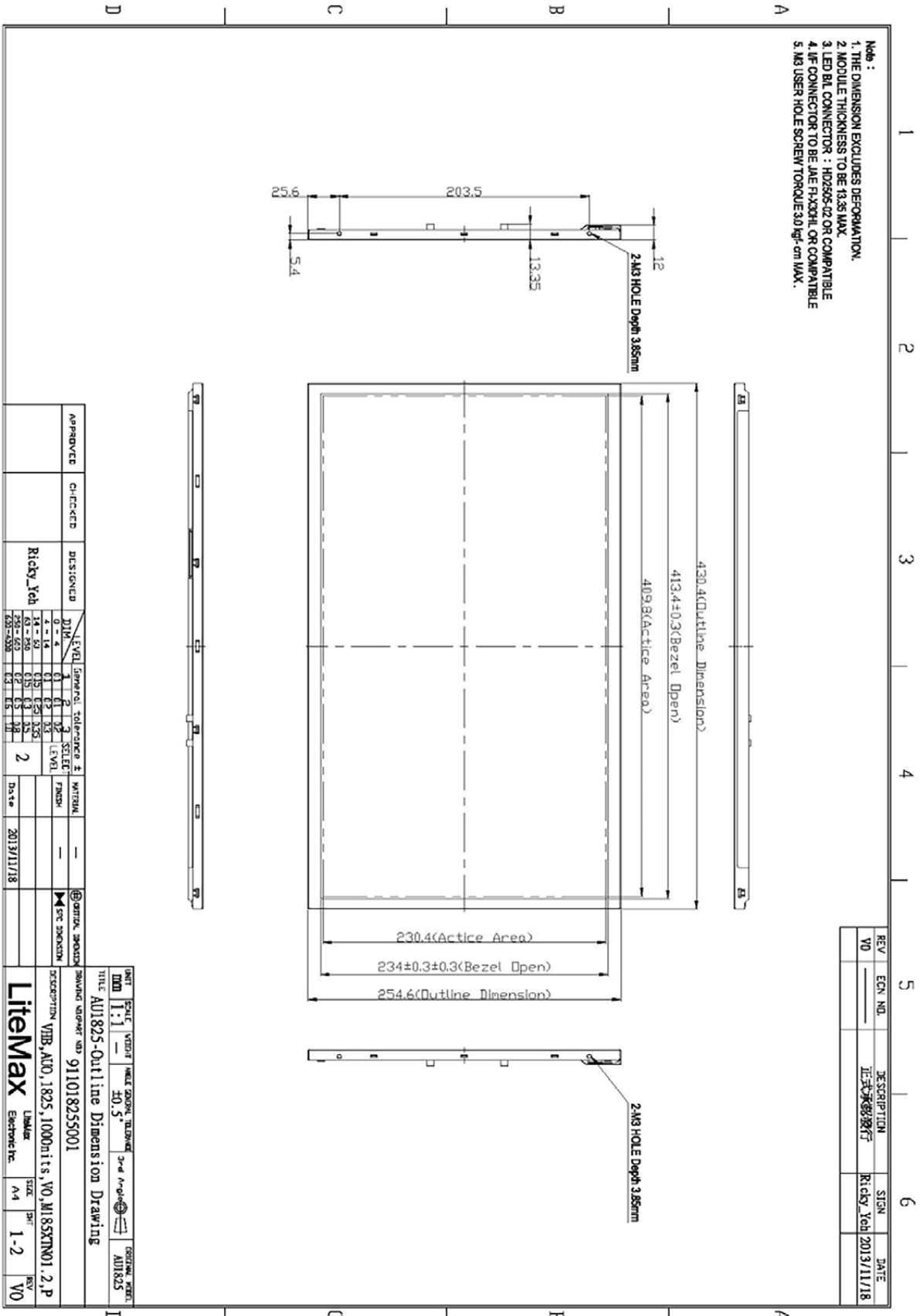
SPECIFICATIONS

Model No.	DLF1825 V2 / DLH1825 V2
Description	18.5" Wide TFT LCD, LED Backlight 1000nits, WXGA
Display Area (mm)	409.8(H) x 230.4(V) mm
Brightness	1000 cd/m ²
Resolution	1366x768 (WXGA)
Contrast Ratio	1250 : 1
Pixel Pitch (mm)	0.3(H) x 0.3(V)
Viewing Angle	+85°~-85°(H), +80°~-80°(V)
Display Colors	16.7M
Response Time (Typical)	5ms
Sync	LVDS
Power Consumption	16W / 21W
Dimensions (mm)	430.4x254.6x13.35
Weight (Net)	1.3Kg
LED Driving Board	LID 18A
Control Board (Optional)	<input type="checkbox"/> AD6038GD <input type="checkbox"/> AD2662GDVAR
<input type="checkbox"/> AD6038GD	VGA+DVI
<input type="checkbox"/> AD2662GDVAR	VGA+DVI +CVBS+S-Video+Audio+RS232
F / R Control Button	<input type="checkbox"/> 4 Key <input type="checkbox"/> 5 Key
<input type="checkbox"/> 4 Key	Power Switch, Menu, Select (+,-),
<input type="checkbox"/> 5 Key	Power Switch, Menu, Select (+,-), Auto
OSD Menu	Brightness, Contrast, H/V Position, Color, Phase, Clock...
Optional	<input type="checkbox"/> AOT <input type="checkbox"/> Touch Screen

*Specifications are subject to change without notice. **All brands or product names are trademarks or registered trademarks of their respective companies.

DLF= Panel+LED Driving Board

DLH= Panel+LED Driving Board+Control Board



REV	ECN NO.	DESCRIPTION	SIGN	DATE
V0		正式承認發行	Ricky Yeh	2013/11/18

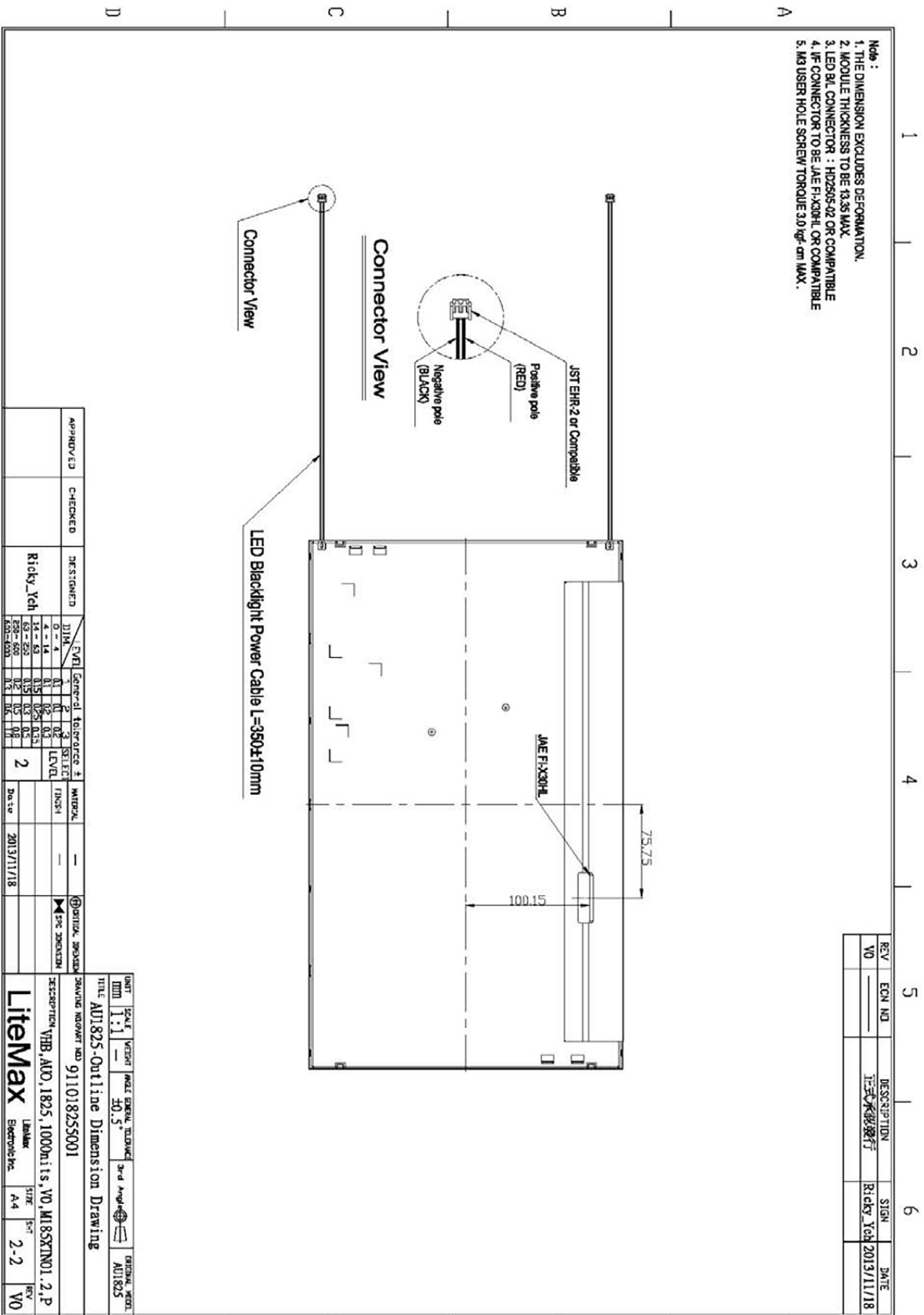
APPROVED	CHECKED	DESIGNED	LEVEL	GENERAL TOLERANCE ±	SECTION	FINISH	DATE
		Ricky Yeh	1	0.1	2	—	2013/11/18
			2	0.2	3	—	
			3	0.3	4	—	
			4	0.4	5	—	
			5	0.5	6	—	
			6	0.6	7	—	
			7	0.7	8	—	
			8	0.8	9	—	
			9	0.9	10	—	
			10	1.0	11	—	

A4 297x210mm

UNIT	SCALE	VECT	HEAT GROUP	TOLERANCE	3rd Angle	ORIGINAL FILE
MM	1:1	—	—	±0.5	—	AUI825

TITLE AUI825-Outline Dimension Drawing
DRAWING NUMBER: 911018255001

DESCRIPTION	LIBRARY	SIZE	REV
VIB_AU0_1825_1000units_V0_M185XTN01.2.P	Librar	A4	1-2
LiteMax Electronic Inc.			V0



APPROVED	CHECKED	DESIGNED	DATE
		Ricky_Yeh	2013/11/18

DATE	DESCRIPTION
2013/11/18	Initial Design

REV	EQD NO	DESCRIPTION	SIGN	DATE
V0		正式承認發行	Ricky_Yeh	2013/11/18

A4 297x210mm

UNIT	SCALE	PROJ	PROJ NO	PROJ NAME	PROJ DATE	PROJ STATUS	PROJ NO	PROJ NAME	PROJ DATE	PROJ STATUS
MM	1:1									

TITLE: AU1825-Outline Dimension Drawing

DESCRIPTION: VHB_A00_1825_1000h1ts_V0_M185XTN01_2.P

Author: Ricky_Yeh

DATE: 2013/11/18

Scale: 1:1

Unit: mm

Sheet: 2-2

Total: 2-2

Rev: V0