

DLF1975 / DLH1975

19" LCD Display, LED Backlight 1000nits,SXGA(1280x1024)

19" TFT LCD panel, built-in 1000 nits high bright for sunlight readable LCD display, high transmittance color filter, high transmission polarizing plates, Low Power Consumption, suitable for kiosk, advertising, POS, marline, transportation, gaming, studio display, gas pump.



KEY FEATURES

- Sunlight Readable
- LED Backlight
- SXGA(1280x1024) High Definition
- High Shock & Vibration Resistance
- Low Power Consumption
- High Contrast Ratio (2000:1)
- Wide Viewing Angle (178°(H), 178°(V))
- High Uniformity
- Low EMI Noise
- Wide Dimming
- Life Expectancy

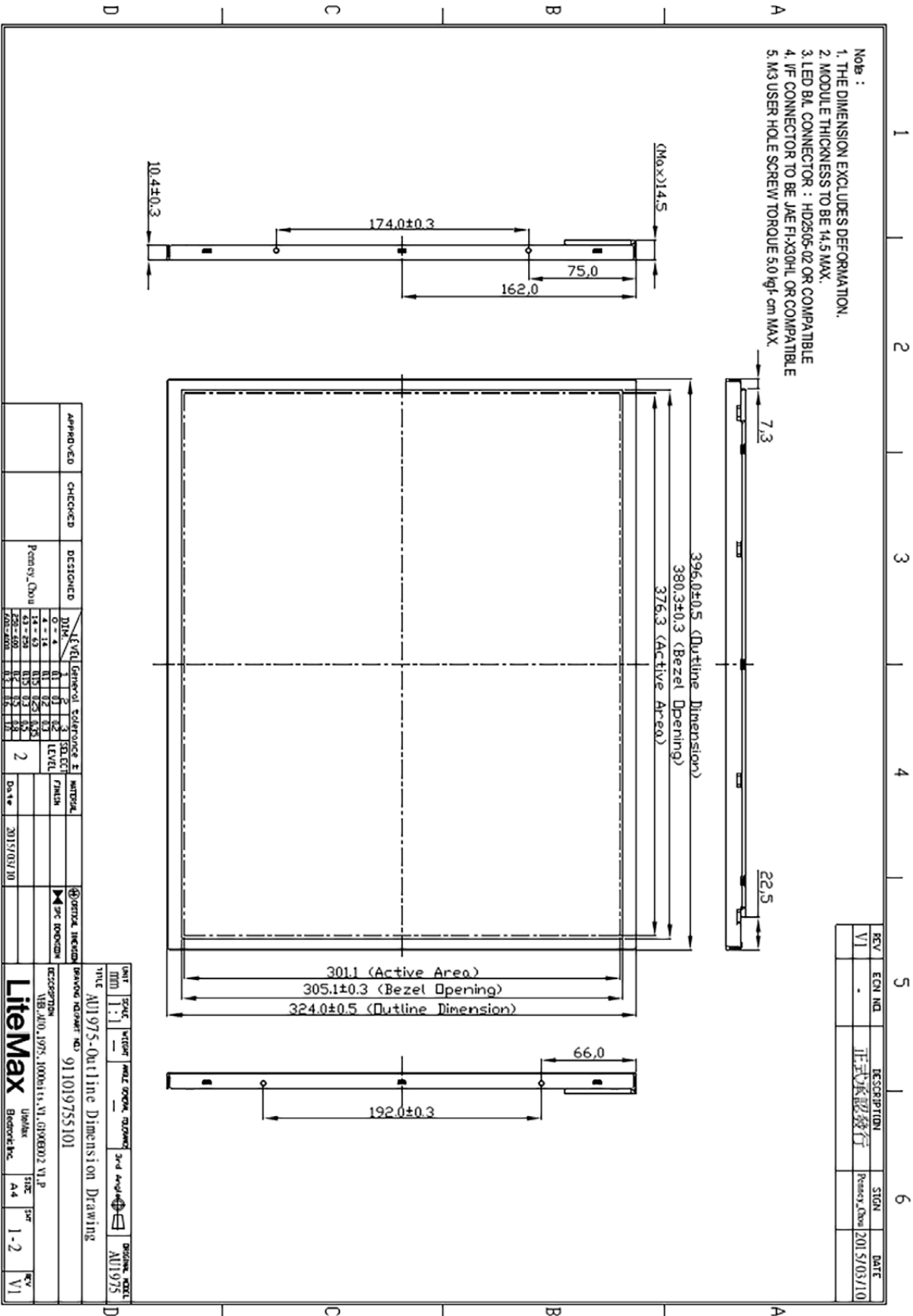
SPECIFICATIONS

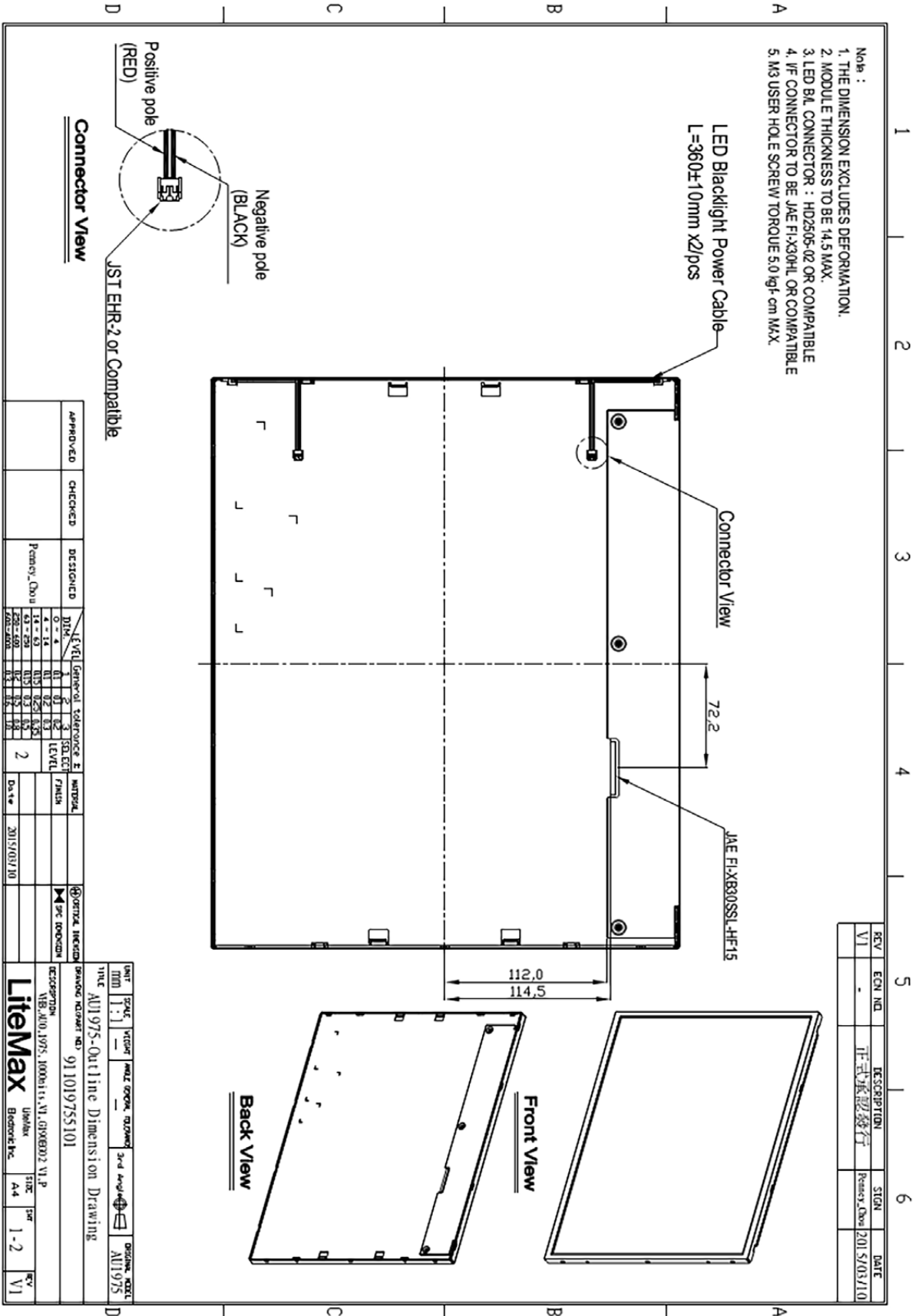
Model No.	DLF1975 V2 / DLH1975 V2
Description	19" TFT LCD, LED Backlight 1000nits,SXGA(1280x1024)
Display Area (mm)	376.32(H) x 301.06 mm
Brightness	1000 cd/m ²
Resolution	1280x1024 (SXGA)
Contrast Ratio	2000 : 1
Pixel Pitch (mm)	0.294(H) x 0.294(V)
Viewing Angle	+89°~-89°(H), +89°~-89°(V)
Display Colors	16.7M
Response Time (Typical)	28ms
Power Consumption	32W / 38W
Dimensions (mm)	396x324x13mm
Weight (Net)	TED / 2.5Kg
LED Driving Board	LID19A
Control Board (Optional)	<input type="checkbox"/> AD5621GA <input type="checkbox"/> AD5621GD <input type="checkbox"/> AD5766GDVA <input type="checkbox"/> AD2662GDVAR
<input type="checkbox"/> AD5621GA	VGA+Audio
<input type="checkbox"/> AD5621GD	VGA+DVI
<input type="checkbox"/> AD5766GDVA	VGA+CVBS+S-Video+Audio (Optional DVI /HDMI)
<input type="checkbox"/> AD2662GDVAR	VGA+DVI (Optional S-Video/ Component / Audio)
F / R Control Button	<input type="checkbox"/> 4 Key <input type="checkbox"/> 5 Key
<input type="checkbox"/> 4 Key	Power Switch, Menu, Select (+,-),
<input type="checkbox"/> 5 Key	Power Switch, Menu, Select (+,-), Auto
OSD Menu	Brightness, Contrast, H/V Position, Color, Phase, Clock...
Optional	<input type="checkbox"/> AOT <input type="checkbox"/> Touch Screen

*Specifications are subject to change without notice. **All brands or product names are trademarks or registered trademarks of their respective companies.

DLF= Panel+LED Driving Board

DLH= Panel+LED Driving Board+Control Board





REV	ECN NO.	DESCRIPTION	SIGN	DATE
V1	-	正式承認發行	Penary, Chou	2015/03/10

LEVEL	General	Tolerance	LEVEL	General	Tolerance	LEVEL	General	Tolerance
0	±0.1	±0.1	1	±0.1	±0.1	2	±0.1	±0.1
1	±0.1	±0.1	2	±0.1	±0.1	3	±0.1	±0.1
2	±0.1	±0.1	3	±0.1	±0.1	4	±0.1	±0.1
3	±0.1	±0.1	4	±0.1	±0.1	5	±0.1	±0.1
4	±0.1	±0.1	5	±0.1	±0.1	6	±0.1	±0.1
5	±0.1	±0.1	6	±0.1	±0.1	7	±0.1	±0.1
6	±0.1	±0.1	7	±0.1	±0.1	8	±0.1	±0.1
7	±0.1	±0.1	8	±0.1	±0.1	9	±0.1	±0.1
8	±0.1	±0.1	9	±0.1	±0.1	10	±0.1	±0.1
9	±0.1	±0.1	10	±0.1	±0.1	11	±0.1	±0.1
10	±0.1	±0.1	11	±0.1	±0.1	12	±0.1	±0.1

UNIT	SCALE	VENDOR	MEZ	GROUP	WORKING	3rd	ANGULAR	ORIGIN	MODEL
MM	1:1								AU1975
TITLE: AU1975-Outline Dimension Drawing									
DRAWING NUMBER NO: 911019755101									
DESCRIPTION: VIB-AU1975-1000h1r-V1-GHXE002 V1.P									
Litemax Unimax									
Bromberg Inc. A4 1-2 V1									

APPROVED	CHECKED	DESIGNED	DATE
		Penary, Chou	2015/03/10