

# DLF3245 / DLH3245 V2

32" TFT LCD, LED Backlight 1200nits,WXGA

32" is a high definition (HD) LCD panel, built-in 1200 nits high bright for sunlight readable LCD display, high transmittance color filter, high transmission polarizing plates, Low Power Consumption, suitable for kiosk, advertising, POS, marine, transportation, gaming, studio display, gas pump.



## KEY FEATURES

- Sunlight Readable
- LED Backlight
- High Shock & Vibration Resistance
- Low Power Consumption
- High Uniformity
- Low EMI Noise
- Wide Dimming
- Life Expectancy

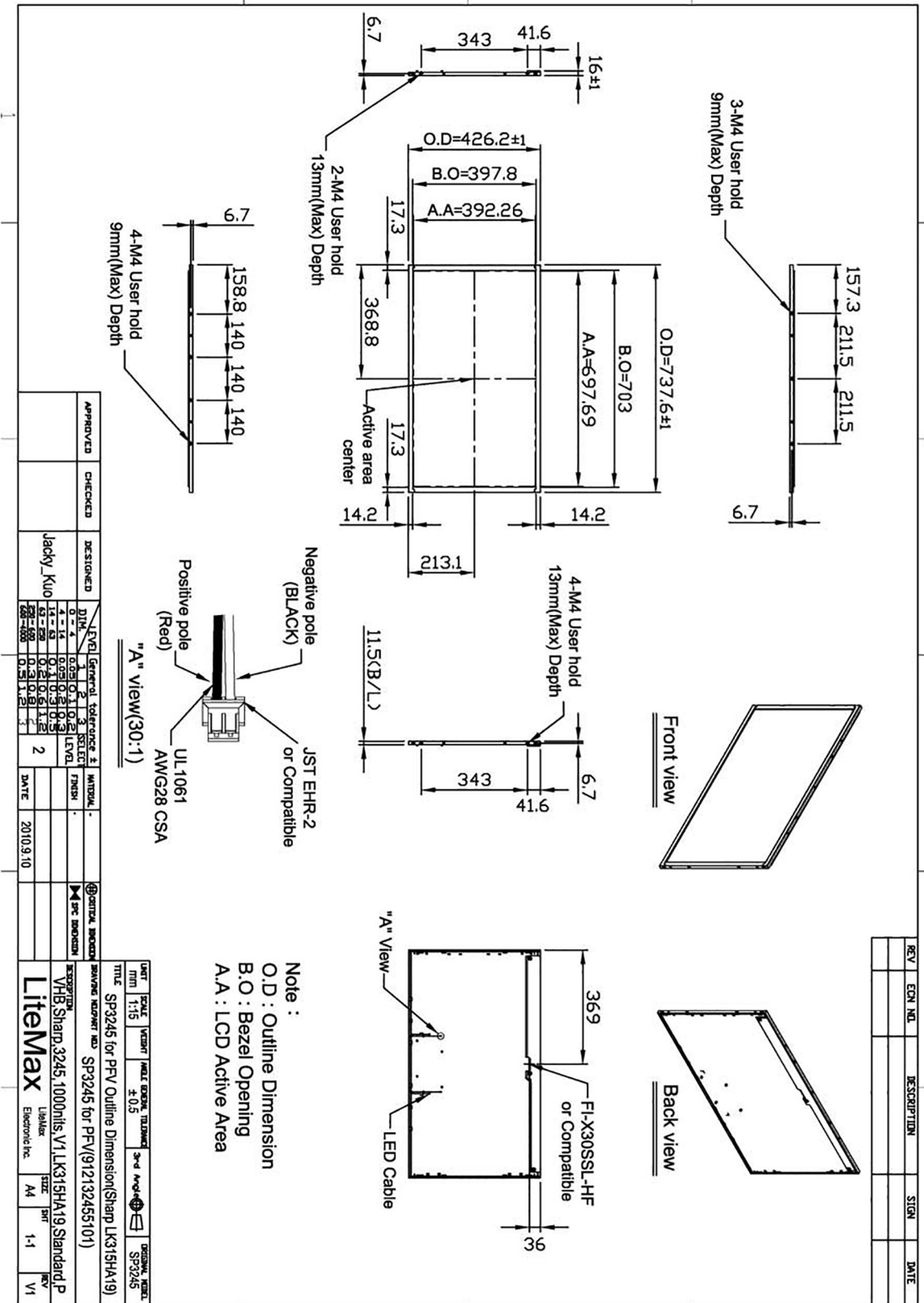
## SPECIFICATIONS

Model No.	DLF3245 V2 / DLH3245 V2
Description	32" TFT LCD, LED Backlight 1200nits,WXGA
Display Area (mm)	697.69 (H) x 392.26(V) mm
Brightness	1200 cd/m <sup>2</sup>
Resolution	1366 x 768 (WXGA)
Contrast Ratio	5000 : 1
Pixel Pitch (mm)	0.51075(H) x 0.51075(V)
Viewing Angle	176°(H), 176°(V)
Display Colors	16.7M
Response Time (Typical)	7ms
Power Consumption	77W / 82W
Dimensions (mm)	737.6x426.2x16mm
Weight (Net)	5.2Kg / 5.4Kg
LED Driving Board	LID32A
Control Board (Optional)	<input type="checkbox"/> AD2662GDHVA <input type="checkbox"/> AD2662GDVAR <input type="checkbox"/> AD2662GDHMVAR
<input type="checkbox"/> AD2662GDHVA	VGA+CVBS+S□Video+Audio (Optional DVI / HDMI )
<input type="checkbox"/> AD2662GDVAR	VGA+DVI (Optional CVBS / S□Video/ Component / Audio)
<input type="checkbox"/> AD2662GDHMVAR	VGA (Optional CVBS / S□Video/ Component / Audio / DVI / HDMI)
F / R Control Button	<input type="checkbox"/> 4 Key <input type="checkbox"/> 5 Key
<input type="checkbox"/> 4 Key	Power Switch, Menu, Select (+,-),
<input type="checkbox"/> 5 Key	Power Switch, Menu, Select (+,-), Auto
OSD Menu	Brightness, Contrast, H/V Position, Color, Phase, Clock...
Optional	<input type="checkbox"/> AOT <input type="checkbox"/> Touch Screen

\*Specifications are subject to change without notice. \*\*All brands or product names are trademarks or registered trademarks of their respective companies.

DLF= Panel+LED Driving Board

DLH= Panel+LED Driving Board+Control Board



APPROVED	CHECKED	DESIGNED	DATE
		Jacky_Kuo	2010.9.10

REV	EQN. NO.	DESCRIPTION	SIGN	DATE

UNIT	SCALE	VECTOR	FIELD	ENCLOSURE	TOLERANCE	3-D	MODEL	DATE
MM	1:1				±0.3			SP3245

LEVEL	DESCRIPTION	DATE
1	INITIAL DESIGN	2010.9.10
2	REVISED	

REV	DESCRIPTION	DATE
0.1	INITIAL DESIGN	2010.9.10
0.2	REVISED	
0.3	REVISED	
0.4	REVISED	
0.5	REVISED	
0.6	REVISED	
0.7	REVISED	
0.8	REVISED	
0.9	REVISED	
1.0	REVISED	
1.1	REVISED	
1.2	REVISED	
1.3	REVISED	
1.4	REVISED	
1.5	REVISED	
1.6	REVISED	
1.7	REVISED	
1.8	REVISED	
1.9	REVISED	
2.0	REVISED	

DATE	DESCRIPTION
2010.9.10	Initial Design

DATE	DESCRIPTION
2010.9.10	Initial Design

DATE	DESCRIPTION
2010.9.10	Initial Design