

SLD 1744 V3

17" TFT LCD Monitor, LED Backlight 1000nits,SXGA



SLD1744 V3 TFT LCD monitor, built-in 1000 nits high brightness for sunlight readable display. It offers the best visibility, performance and cost effective value. The high level of brightness together with the optimal contrast ratio renders high quality images and enhances legibility. With its fast response time and LED backlight technology, the monitor brings remarkable display quality and durability for your applications. Suitable for marline, military, medical, transportation, and industrial application.



KEY FEATURES

- Sunlight Readable
- LED Backlight
- High Shock & Vibration Resistance
- Low Power Consumption
- High Uniformity
- Low EMI Noise
- Wide Dimming
- Life Expectancy

APPLICATIONS

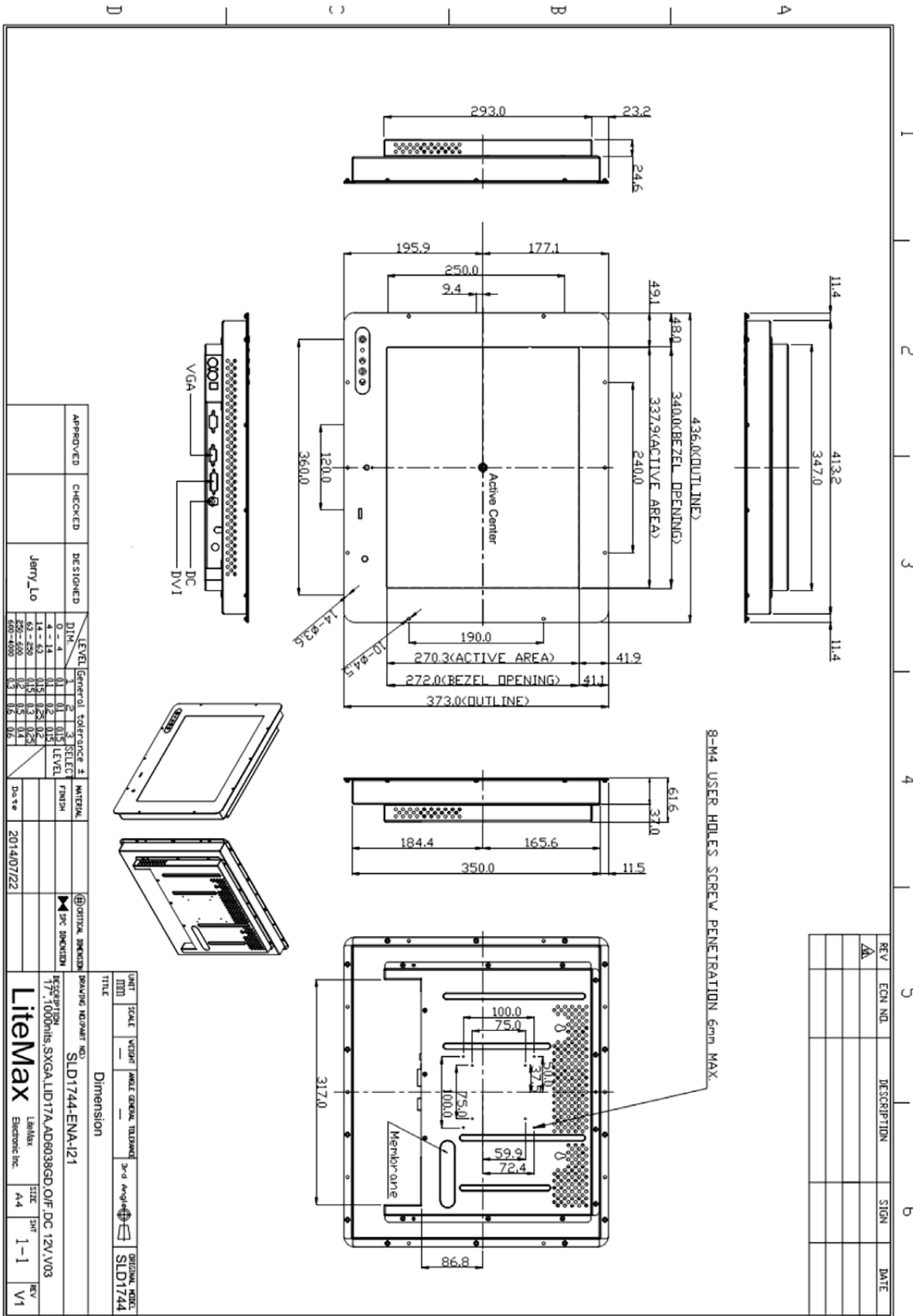
- Marline
- Military
- Medical
- Transportation
- Industrial

SPECIFICATIONS

Model No.	SLD1744 V3
Description	17" TFT LCD monitor, LED Backlight 1000 nits, SXGA
Display Area (mm)	337.92 x 270.336 mm
Brightness	1000 cd/m ²
Resolution	1280x1024 (SXGA)
Contrast Ratio	1000 : 1
Pixel Pitch (mm)	0.264(H) x 0.264(V)
Viewing Angle	+80°~-80°(H), +70°~-70°(V)
Display Colors	16.7M
Response Time (Typical)	5ms
Power Input	DC 12V
Power Consumption	21.1W
Dimensions (mm)	436x373x61.6
Weight (Net)	5.83Kg
LED Driving Board	LID17A
Control Board (Optional)	<input type="checkbox"/> AD6038GD
<input type="checkbox"/> AD6038GD	VGA+DVI
F / R Control Button	<input type="checkbox"/> 4 Key <input type="checkbox"/> 5 Key
<input type="checkbox"/> 4 Key	Power Switch, Menu, Select (+,-),
<input type="checkbox"/> 5 Key	Power Switch, Menu, Select (+,-), Auto
OSD Menu	Brightness, Contrast, H/V Position, Color, Phase, Clock...
Optional	<input type="checkbox"/> AOT <input type="checkbox"/> Touch Screen <input type="checkbox"/> Waterproof

*Specifications are subject to change without notice. **All brands or product names are trademarks or registered trademarks of their respective companies.

SLD/SLO = Panel+ LED Driving Board + Control Board + Housing



APPROVED	CHECKED	DESIGNED
		Jerry_Lo

LEVEL	General	tolerance	±	MATERIAL
0 - 4	0.1	0.1	0.1	SELECT
4 - 14	0.1	0.2	0.15	LEVEL
14 - 53	0.15	0.25	0.2	
53 - 200	0.15	0.3	0.25	
200 - 500	0.3	0.5	0.4	
500 - 1000	0.5	0.7	0.6	

DATE	DESCRIPTION
2014/07/22	

DATE	SCALE	VISUAL	FIELD	GENERAL	TOLERANCE	3-d	4-d	5-d	6-d	ORIGINAL
2014/07/22										SLD1744

Dimension

Part Number: SLD1744-ENA-121

Manufacturer: Litemax

Electronic Inc.

Label: Litemax

Electronic Inc.

Size: A4

Sheet: 1-1

Rev: V1

REV	EQD NO.	DESCRIPTION	SIGN	DATE
A				