

SLD1768 V2

17" TFT LCD, LED Backlight 1600nits,SXGA(1280x1024)

17" TFT LCD panel, built-in 1600 nits high bright for sunlight readable LCD display, high transmittance color filter, high transmission polarizing plates, Low Power Consumption, suitable for kiosk, advertising, POS, marline, transportation, gaming, studio display, gas pump.



KEY FEATURES

- Sunlight Readable
- LED Backlight
- SXGA(1280x1024) High Definition
- High Shock & Vibration Resistance
- Low Power Consumption
- High Uniformity
- Low EMI Noise
- Wide Dimming
- Life Expectancy

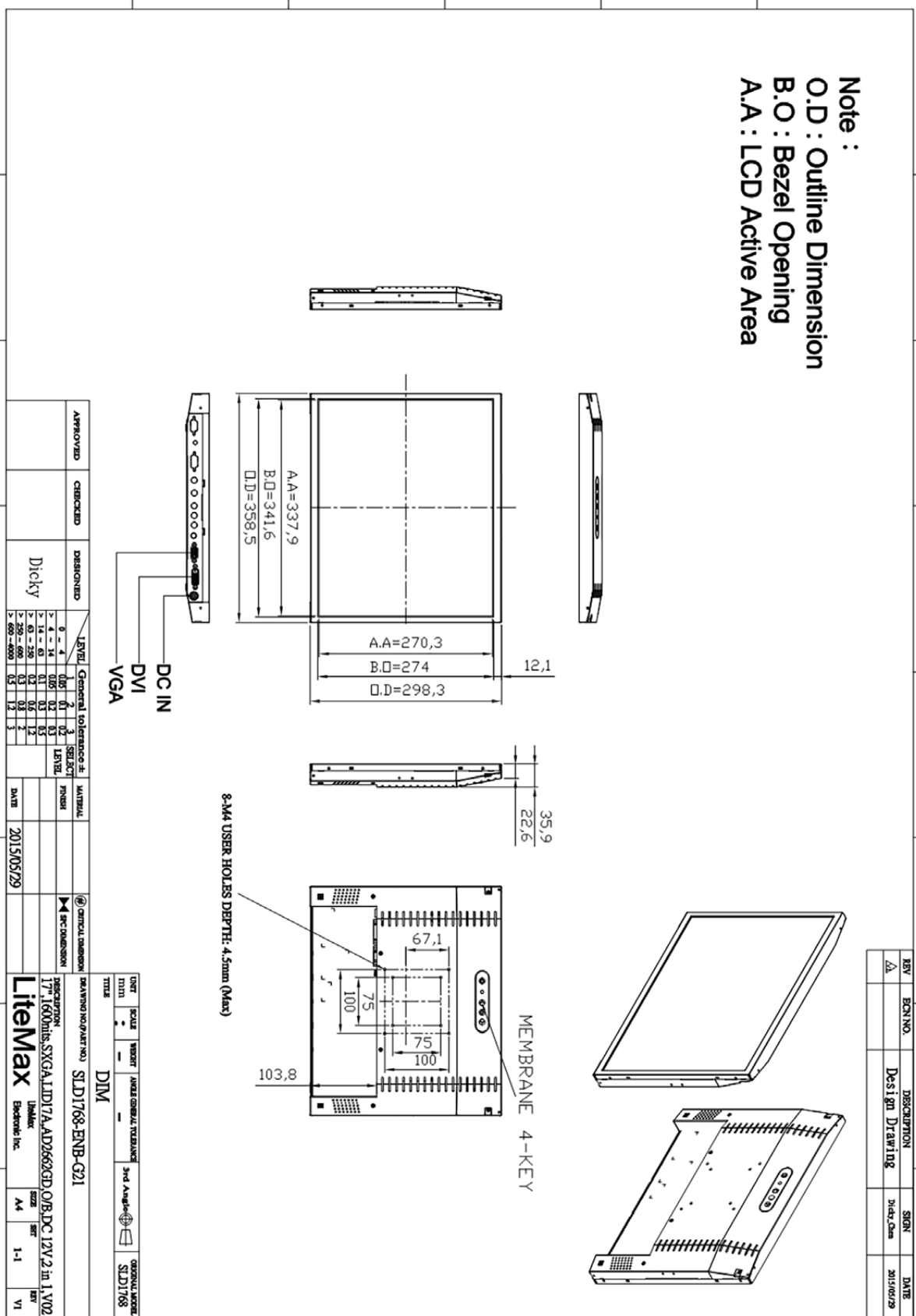
SPECIFICATIONS

Model No.	SLD1768 V2
Description	17" TFT LCD, LED Backlight 1600nits,SXGA(1280x1024)
Display Area (mm)	337.9(H) x 270.3(V) mm
Brightness	1600 cd/m ²
Resolution	1280x1024 (SXGA)
Contrast Ratio	1000 : 1
Pixel Pitch (mm)	0.264(H) x 0.264(V)
Pixel Pre Inch (PPI)	96
Viewing Angle	170°(H), 160°(V)
Color Saturation (NTSC)	83%
Display Colors	16.7M
Response Time (Typical)	5ms
Sync	LVDS
Operating Temperature	0°C ~ 50°C
Storage Temperature	-20°C ~ 60°C
Power Consumption	32.5W
Dimensions (mm)	358.5x298.3x35.9mm
Weight (Net)	2.5kg
LED Driving Board	LID17A
Control Board (Optional)	<input type="checkbox"/> AD2662GDVAR
<input type="checkbox"/> AD2662GDVAR	VGA+DVI (Optional S-Video/ Component / Audio)
F / R Control Button	<input type="checkbox"/> 4 Key
<input type="checkbox"/> 4 Key	Power Switch, Menu, Select (+,-),
OSD Menu	Brightness, Contrast, H/V Position, Color, Phase, Clock...
Optional	<input type="checkbox"/> AOT <input type="checkbox"/> Touch Screen

*Specifications are subject to change without notice. **All brands or product names are trademarks or registered trademarks of their respective companies.

SLD/SLO = Panel+ LED Driving Board + Control Board + Housing

Note :
 O.D : Outline Dimension
 B.O : Bezel Opening
 A.A : LCD Active Area



REV	CON NO.	DESCRIPTION	SIGN	DATE
Δ		Design Drawing	Dick Com	2015/05/29

APPROVED	CHECKED	DESIGNED	LEVEL	General tolerance #	MATERIAL	DATE
		Dicky	0 - 4	01	FRONT	2015/05/29
			> 4 - 6	02		
			> 6 - 250	03		
			> 250 - 600	04		
			> 600 - 6000	05		

UNIT	SCALE	UNIT	UNIT	UNIT	UNIT
MM	1:1	MM	MM	MM	MM

DRAWING NO./PART NO. SLD1768-ENB-G21
 DESCRIPTION: 17" 1600x1200 SXXGA LDD17A-AD2662GSD O/B DC 12V/2 in 1 V02
LiteMax
 LiteMax Electronic Inc.