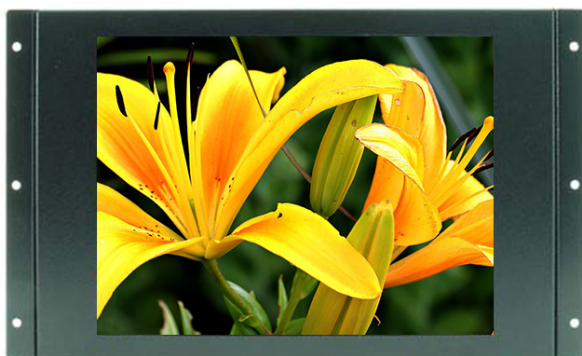


SLO0868

8.4" Open Frame TFT LCD Display, LED Backlight, 1600nits, SVGA (800x600)

SLO0868 is a open frame LCD display, built-in 1600 nits high brightness for sunlight readable application. Features wide operating temperature, high brightness, AOT optical bonding, touch screen capable, and customized mechanical design; fulfill the demand for extreme environments. The high level of brightness together with LED backlight technology, the monitor brings remarkable display quality. And guaranteeing product life cycle longevity, stability, and reliability. Perfectly suitable for kiosk, ATM, POS, military, transportation, and outdoor industrial application.



KEY FEATURES

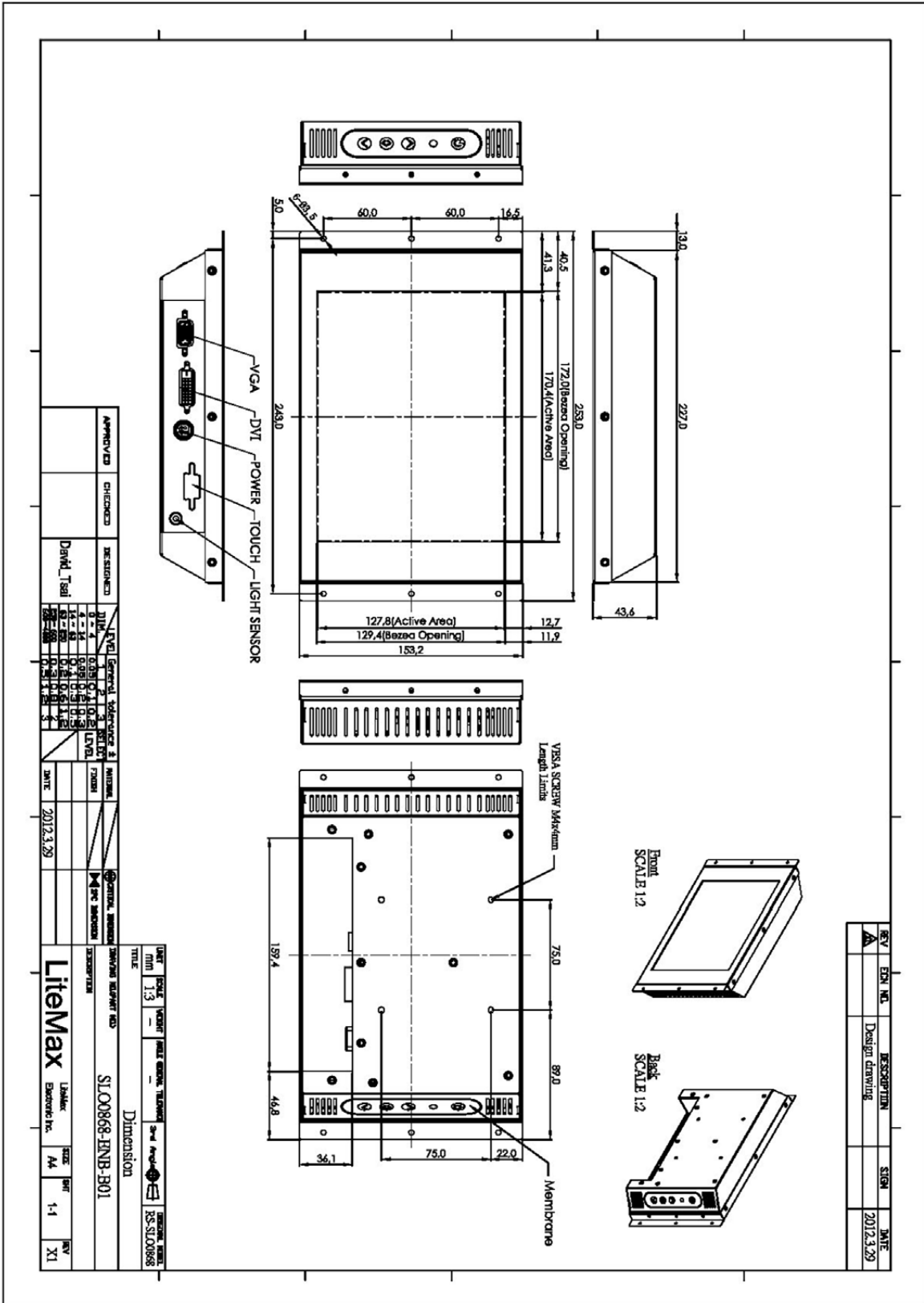
- Sunlight Readable
- LED Backlight
- High Shock & Vibration Resistance
- Wide Operation Temperature
- High Uniformity
- Low EMI Noise
- Wide Dimming
- Life Expectancy

SPECIFICATIONS

Model No.	SLO0868
Description	8.4" Open Frame TFT LCD Display, LED Backlight, 1600nits, SVGA(800x600)
Display Area (mm)	170.4 x 127.8mm
Brightness	1600 cd/m ²
Resolution	SVGA (800 x 600)
Contrast Ratio	600 : 1
Pixel Pitch (mm)	0.213 x 0.213
Viewing Angle	160°(H), 140°(V)
Display Colors	16.2M / 262K
Response Time (Typical)	35ms
Power Consumption	9.7W
Dimensions (mm)	253 x 153.2 x 43.6mm
Weight (Net)	1.3Kg
LED Driving Board	LID08A06
Control Board (Optional)	<input type="checkbox"/> AD5621GA <input type="checkbox"/> AD5621GD <input type="checkbox"/> AD2662GDVAR
<input type="checkbox"/> AD5621GA	VGA+Audio
<input type="checkbox"/> AD5621GD	VGA+DVI
<input type="checkbox"/> AD2662GDVAR	VGA+DVI (Optional S-Video/ Component / Audio)
F / R Control Button	<input type="checkbox"/> 4 Key <input type="checkbox"/> 5 Key
<input type="checkbox"/> 4 Key	Power Switch, Menu, Select (+,-),
<input type="checkbox"/> 5 Key	Power Switch, Menu, Select (+,-), Auto
OSD Menu	Brightness, Contrast, H/V Position, Color, Phase, Clock...
Optional	<input type="checkbox"/> AOT <input type="checkbox"/> Touch Screen

*Specifications are subject to change without notice. **All brands or product names are trademarks or registered trademarks of their respective companies.

SLD/SLO = Panel+ LED Driving Board + Control Board + Housing



APPROVED	CHECKED	DESIGNED	DATE
		David Teal	2012.3.29

REV	DESCRIPTION	DATE
A	Design drawing	2012.3.29

REV	DESCRIPTION	DATE
A	Design drawing	2012.3.29

DATE	2012.3.29
DATE	2012.3.29

DATE	2012.3.29
DATE	2012.3.29

DATE	2012.3.29
DATE	2012.3.29

DATE	2012.3.29
DATE	2012.3.29

DATE	2012.3.29
DATE	2012.3.29

DATE	2012.3.29
DATE	2012.3.29

DATE	2012.3.29
DATE	2012.3.29

DATE	2012.3.29
DATE	2012.3.29

DATE	2012.3.29
DATE	2012.3.29

DATE	2012.3.29
DATE	2012.3.29

DATE	2012.3.29
DATE	2012.3.29

DATE	2012.3.29
DATE	2012.3.29

DATE	2012.3.29
DATE	2012.3.29

DATE	2012.3.29
DATE	2012.3.29

DATE	2012.3.29
DATE	2012.3.29

DATE	2012.3.29
DATE	2012.3.29

DATE	2012.3.29
DATE	2012.3.29

DATE	2012.3.29
DATE	2012.3.29

DATE	2012.3.29
DATE	2012.3.29

DATE	2012.3.29
DATE	2012.3.29

DATE	2012.3.29
DATE	2012.3.29

DATE	2012.3.29
DATE	2012.3.29

DATE	2012.3.29
DATE	2012.3.29

DATE	2012.3.29
DATE	2012.3.29

DATE	2012.3.29
DATE	2012.3.29

DATE	2012.3.29
DATE	2012.3.29

DATE	2012.3.29
DATE	2012.3.29

DATE	2012.3.29
DATE	2012.3.29

DATE	2012.3.29
DATE	2012.3.29

DATE	2012.3.29
DATE	2012.3.29

DATE	2012.3.29
DATE	2012.3.29

DATE	2012.3.29
DATE	2012.3.29

DATE	2012.3.29
DATE	2012.3.29

DATE	2012.3.29
DATE	2012.3.29

DATE	2012.3.29
DATE	2012.3.29

DATE	2012.3.29
DATE	2012.3.29

DATE	2012.3.29
DATE	2012.3.29

DATE	2012.3.29
DATE	2012.3.29

DATE	2012.3.29
DATE	2012.3.29

DATE	2012.3.29
DATE	2012.3.29

DATE	2012.3.29
DATE	2012.3.29

DATE	2012.3.29
DATE	2012.3.29

DATE	2012.3.29
DATE	2012.3.29

DATE	2012.3.29
DATE	2012.3.29

DATE	2012.3.29
DATE	2012.3.29

DATE	2012.3.29
DATE	2012.3.29

DATE	2012.3.29
DATE	2012.3.29

DATE	2012.3.29
DATE	2012.3.29

DATE	2012.3.29
DATE	2012.3.29

DATE	2012.3.29
DATE	2012.3.29

DATE	2012.3.29
DATE	2012.3.29

DATE	2012.3.29
DATE	2012.3.29

DATE	2012.3.29
DATE	2012.3.29

DATE	2012.3.29
DATE	2012.3.29

DATE	2012.3.29
DATE	2012.3.29

DATE	2012.3.29
DATE	2012.3.29

DATE	2012.3.29
DATE	2012.3.29

DATE	2012.3.29
DATE	2012.3.29

DATE	2012.3.29
DATE	2012.3.29

DATE	2012.3.29
DATE	2012.3.29

DATE	2012.3.29
DATE	2012.3.29

DATE	2012.3.29
DATE	2012.3.29

DATE	2012.3.29
DATE	2012.3.29

DATE	2012.3.29
DATE	2012.3.29

DATE	2012.3.29
DATE	2012.3.29

DATE	2012.3.29
DATE	2012.3.29

DATE	2012.3.29
DATE	2012.3.29

DATE	2012.3.29
DATE	2012.3.29

DATE	2012.3.29
DATE	2012.3.29

DATE	2012.3.29
DATE	2012.3.29

DATE	2012.3.29
DATE	2012.3.29

DATE	2012.3.29
DATE	2012.3.29

DATE	2012.3.29
DATE	2012.3.29

DATE	2012.3.29
DATE	2012.3.29

DATE	2012.3.29
DATE	2012.3.29

DATE	2012.3.29
DATE	2012.3.29

DATE	2012.3.29
DATE	2012.3.29

DATE	2012.3.29
DATE	2012.3.29

DATE	2012.3.29
DATE	2012.3.29

DATE	2012.3.29
DATE	2012.3.29

DATE	2012.3.29
DATE	2012.3.29

DATE	2012.3.29
DATE	2012.3.29

DATE	2012.3.29
DATE	2012.3.29

DATE	2012.3.29
DATE	2012.3.29

DATE	2012.3.29
DATE	2012.3.29

DATE	2012.3.29
DATE	2012.3.29

DATE	2012.3.29
DATE	2012.3.29

DATE	2012.3.29
DATE	2012.3.29

DATE	2012.3.29
DATE	2012.3.29

DATE	2012.3.29
DATE	2012.3.29

DATE	2012.3.29
DATE	2012.3.29

DATE	2012.3.29
DATE	2012.3.29

DATE	2012.3.29
DATE	2012.3.29

DATE	2012.3.29
DATE	2012.3.29

DATE	2012.3.29
DATE	2012.3.29

DATE	2012.3.29
DATE	2012.3.29

DATE	2012.3.29
DATE	2012.3.29

DATE	2012.3.29
DATE	2012.3.29

DATE	2012.3.29
DATE	2012.3.29

DATE	2012.3.29
DATE	2012.3.29

DATE	2012.3.29
DATE	2012.3.29

DATE	2012.3.29
DATE	