

SLO1555 V2

15" Open Frame LCD Display, LED Backlight 1000nits, XGA

SLO1555 V2 Open Frame LCD Display, built-in 1000 nits high brightness for sunlight readable display. It offers the best visibility, performance and cost effective value. The high level of brightness together with the optimal contrast ratio renders high quality images and enhances legibility. With its fast response time and LED backlight technology, the monitor brings remarkable display quality and durability for your applications. Suitable for marline, military, medical, transportation, and industrial application.



KEY FEATURES

- Sunlight Readable
- LED Backlight
- High Shock & Vibration Resistance
- Low Power Consumption
- Wide Operation Temperature. (-20°C~ 60°C)
- High Uniformity (90%)
- Low EMI Noise
- Wide Dimming
- Life Expectancy (70,000hrs)

APPLICATIONS

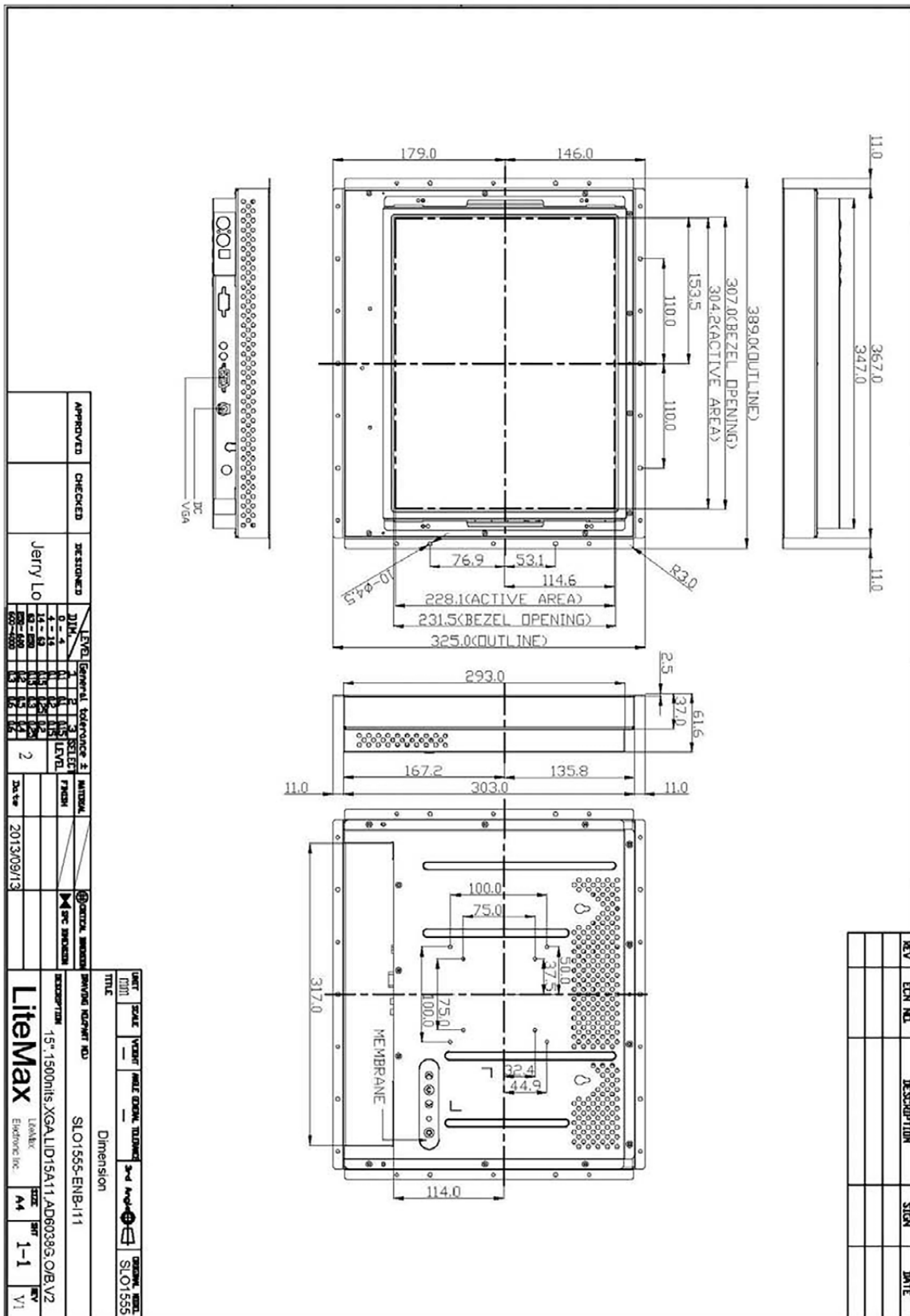
- Marline
- Military
- Medical
- Transportation
- Industrial

SPECIFICATIONS

Model No.	SLO1555 V2
Description	15" Open Frame LCD Display, LED Backlight 1000 nits, XGA
Display Area (mm)	304.128 x 228.096 mm
Brightness	1000 cd/m ²
Resolution	1024x768 (XGA)
Contrast Ratio	1000 : 1
Pixel Pitch (mm)	0.297(H) x 0.297(V)
Viewing Angle	+80°~-80°(H), +70°~-70°(V)
Display Colors	16.2M
Response Time (Typical)	16ms
Power Input	DC 12V
Power Consumption	15W
Dimensions (mm)	389x325x61.6
Weight (Net)	4.62Kg
Control Board (Optional)	<input type="checkbox"/> AD6038G <input type="checkbox"/> AD6038GA <input type="checkbox"/> AD6038GD <input type="checkbox"/> AD2662GDHVA <input type="checkbox"/> AD2662GDVAR
<input type="checkbox"/> AD6038G	VGA
<input type="checkbox"/> AD6038GA	VGA+Audio
<input type="checkbox"/> AD6038GD	VGA+DVI
<input type="checkbox"/> AD2662GDHVA	VGA+CVBS+S-Video+Audio (Optional DVI / Component / HDMI)
<input type="checkbox"/> AD2662GDVAR	VGA+DVI (Optional S-Video/ Component / Audio)
F / R Control Button	<input type="checkbox"/> 4 Key <input type="checkbox"/> 5 Key
<input type="checkbox"/> 4 Key	Power Switch, Menu, Select (+,-),
<input type="checkbox"/> 5 Key	Power Switch, Menu, Select (+,-), Auto
OSD Menu	Brightness, Contrast, H/V Position, Color, Phase, Clock...
Optional	<input type="checkbox"/> AOT <input type="checkbox"/> Touch Screen <input type="checkbox"/> Waterproof

*Specifications are subject to change without notice. **All brands or product names are trademarks or registered trademarks of their respective companies.

SLD/SLO = Panel+ LED Driving Board + Control Board + Housing



APPROVED	CHECKED	DESIGNED BY	Jerry Lo
		DATE	2013/09/13
		SCALE	1:1
		TITLE	Dimension

PROJECT NO.	15-1500nits XGA LCD15A11
DESCRIPTION	15" 1500nits XGA LCD15A11 ADB0393 O/B V2
DATE	2013/09/13
SCALE	1:1

REV	DATE
Y1	

REV	ECN NO.	DESCRIPTION	SIGN	DATE