

SLO1568 V3 (2,000 nits)

15" TFT LCD Monitor, LED Backlight 2,000nits, XGA (1024x768)

SLO1568 TFT LCD monitor, built-in 2000 nits high brightness for sunlight readable display. It offers the best visibility, performance and cost effective value. The high level of brightness together with the optimal contrast ratio renders high quality images and enhances legibility. With its fast response time and LED backlight technology, the monitor brings remarkable display quality and durability for your applications. Suitable for marine, military, medical, transportation, and industrial application.



KEY FEATURES

- Brightness: 2000nits
- LED Backlight
- XGA(1024x768) High Definition
- High Shock & Vibration Resistance
- Low Power Consumption
- High Uniformity
- Low EMI Noise
- Wide Dimming

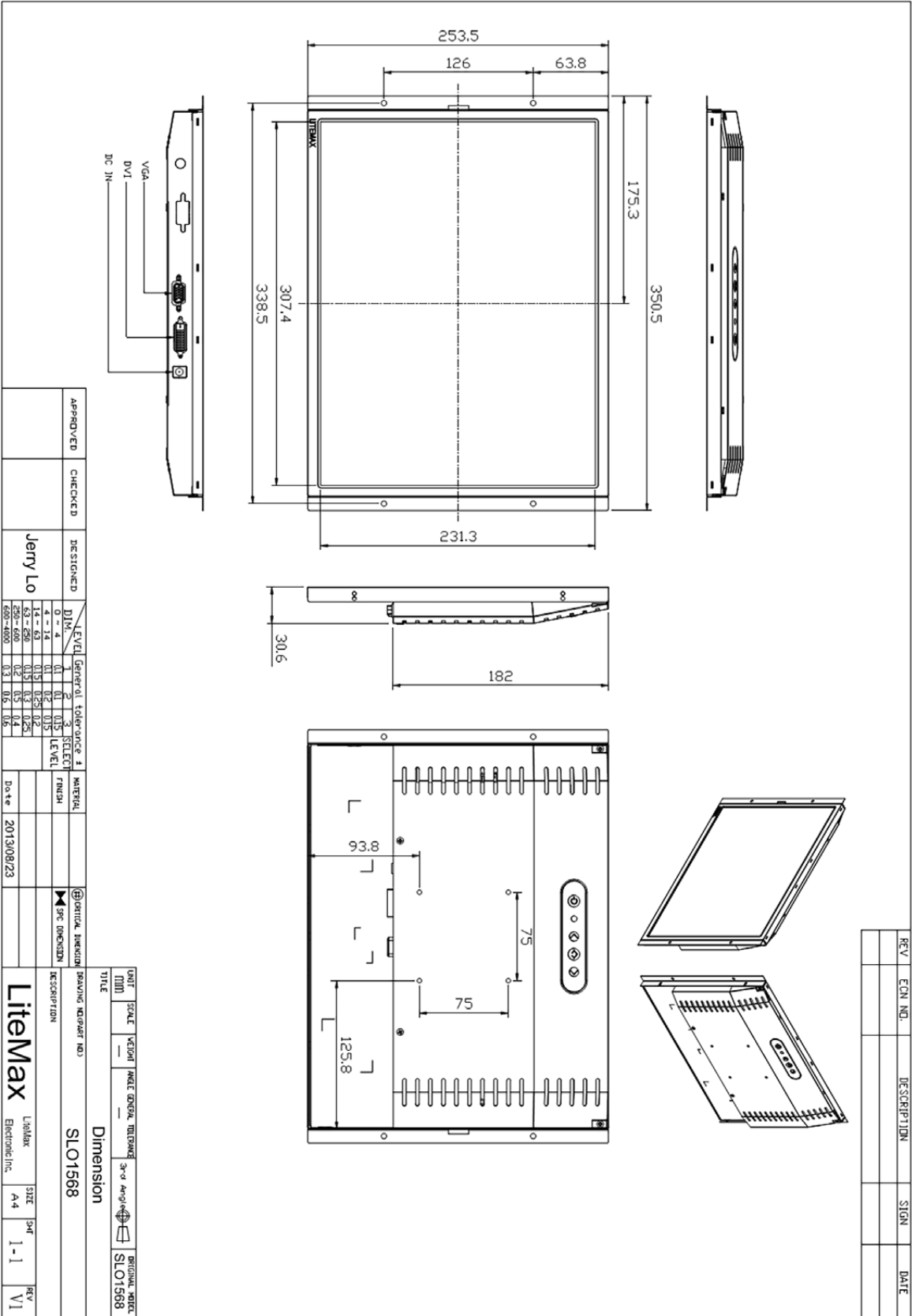
SPECIFICATIONS

Model No.	SLO1568 V3
Description	15" TFT LCD Monitor, LED Backlight 2,000nits,XGA(1024x768)
Display Area (mm)	304.13(H) x 228.1(V) mm
Brightness	1600 cd/m ²
Resolution	1024 x 768 (XGA)
Contrast Ratio	1000 : 1
Pixel Pitch (mm)	0.297(H) x 0.297(V)
Pixel Pre Inch (PPI)	85
Viewing Angle	+80°~-80°(H), +80°~-80°(V)
Color Saturation (NTSC)	69%
Display Colors	16.7M
Response Time (Typical)	8ms
Operating Temperature	-20°C ~ 70°C
Storage Temperature	-30°C ~ 80°C
Power Consumption	23W
Dimensions (mm)	350.5x253.5x30.6mm
Weight (Net)	1.3kg
LED Driving Board	LID15A
Control Board (Optional)	<input type="checkbox"/> AD6038GA <input type="checkbox"/> AD6038GD
<input type="checkbox"/> AD6038GA	VGA+Audio
<input type="checkbox"/> AD6038GD	VGA+DVI
F / R Control Button	<input type="checkbox"/> 4 Key
<input type="checkbox"/> 4 Key	Power Switch, Menu, Select (+,-),
OSD Menu	Brightness, Contrast, H/V Position, Color, Phase, Clock...
Optional	<input type="checkbox"/> AOT <input type="checkbox"/> Touch Screen

*Specifications are subject to change without notice. **All brands or product names are trademarks or registered trademarks of their respective companies.

SLD/SLO = Panel+ LED Driving Board + Control Board + Housing

MECHANICAL DRAWING Unit: mm



REV	ECN NO.	DESCRIPTION	SIGN.	DATE

APPROVED	CHECKED	DESIGNED	DATE	2013/08/23
		Jerry Lo		

LEVEL	GENERAL	TOLERANCE	FINISH
0 - 4	0.1	0.15	
4 - 14	0.1	0.2	
14 - 43	0.15	0.25	
43 - 68	0.2	0.3	
68 - 80	0.3	0.4	
80 - 100	0.4	0.5	
100 - 150	0.5	0.6	
150 - 200	0.6	0.7	
200 - 300	0.7	0.8	
300 - 400	0.8	0.9	
400 - 600	0.9	1.0	
600 - 1000	1.0	1.2	

UNIT	SCALE	SCALE	SCALE	SCALE	SCALE	SCALE	SCALE	SCALE	SCALE	SCALE
MM	1:1	1:1	1:1	1:1	1:1	1:1	1:1	1:1	1:1	1:1
TITLE	Dimension									
DESCRIPTION	LitexMax									
DATE	2013/08/23									
REV	V1									

BRIGLIA, MITO	3rd Angle Projection	