

SLO 1744 V3

17" TFT LCD Monitor, LED Backlight 1000nits, SXGA



SLO1744 open frame LCD display, built-in 1000 nits high brightness for sunlight readable display. It offers the best visibility, performance and cost effective value. The high level of brightness together with the optimal contrast ratio renders high quality images and enhances legibility. With its fast response time and LED backlight technology, the monitor brings remarkable display quality and durability for your applications. Suitable for marine, military, medical, transportation, and industrial application.



KEY FEATURES

- Sunlight Readable
- LED Backlight
- High Shock & Vibration Resistance
- Low Power Consumption
- High Uniformity
- Low EMI Noise
- Wide Dimming
- Life Expectancy

APPLICATIONS

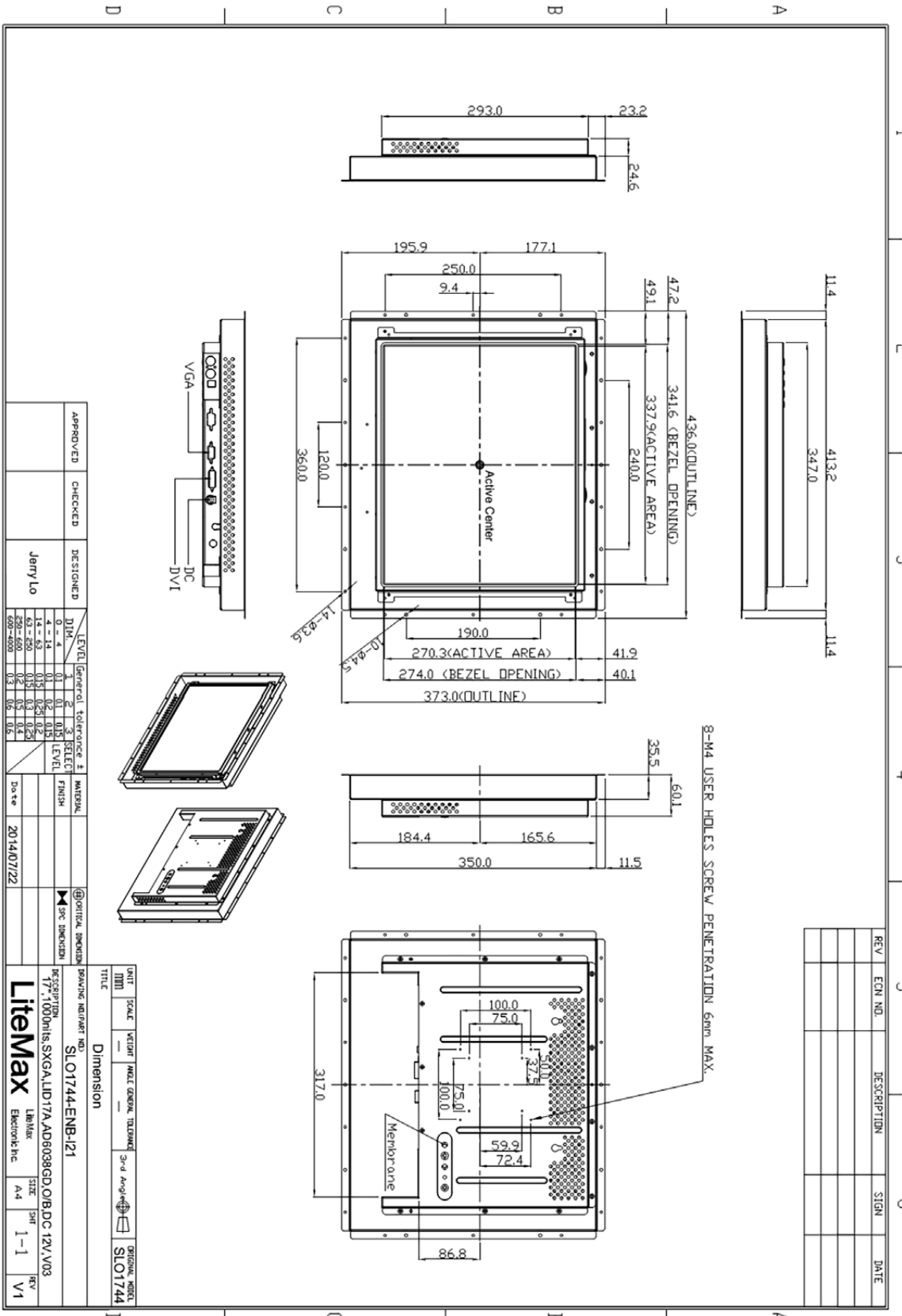
- Marine
- Military
- Medical
- Transportation
- Industrial

SPECIFICATIONS

Model No.	SLO1744 V3
Description	17" Open Frame LCD Display, LED Backlight 1000 nits, SXGA
Display Area (mm)	337.92 x 270.336 mm
Brightness	1000 cd/m ²
Resolution	1280x1024 (SXGA)
Contrast Ratio	1000 : 1
Pixel Pitch (mm)	0.264(H) x 0.264(V)
Viewing Angle	+80°~-80°(H), +80°~-80°(V)
Display Colors	16.7M
Response Time (Typical)	5ms
Power Input	DC-12V
Power Consumption	21.1W
Dimensions (mm)	436x373x60.1
Weight (Net)	5.8 Kg
LED Driving Board	LID17A
Control Board (Optional)	<input type="checkbox"/> AD6038GD <input type="checkbox"/> AD2662GVA+DVI Cable
<input type="checkbox"/> AD6038GD	VGA+DVI
<input type="checkbox"/> AD2662GVA+DVI Cable	VGA+CVBS+S-Video+Audio+DVI Cable
F / R Control Button	<input type="checkbox"/> 4 Key <input type="checkbox"/> 5 Key
<input type="checkbox"/> 4 Key	Power Switch, Menu, Select (+,-),
<input type="checkbox"/> 5 Key	Power Switch, Menu, Select (+,-), Auto
OSD Menu	Brightness, Contrast, H/V Position, Color, Phase, Clock...
Optional	<input type="checkbox"/> AOT <input type="checkbox"/> Touch Screen <input type="checkbox"/> Waterproof

*Specifications are subject to change without notice. **All brands or product names are trademarks or registered trademarks of their respective companies.

SLD/SLO = Panel+ LED Driving Board + Control Board + Housing



APPROVED	CHECKED	DESIGNED	Jerry Lo
LEVEL		General Tolerance	±
0 - 4	1	0.1	0.15
1 - 14	2	0.2	0.25
15 - 250	3	0.3	0.35
250 - 500	4	0.4	0.45
500 - 1000	5	0.5	0.55
1000 - 4000	6	0.6	0.65
DATE		2014/07/22	

UNIT	SCALE	WEIGHT	WALL THICKNESS	3rd ANGLE	ORIGINAL MODEL
MM					SLO1744
TITLE					
Dimension					
DRAWING NUMBER NO. SLO1744-ENB-121					
DESCRIPTION					
17" 1000nits SXGA-LD17A AD8038GD/8DC 12V.V03					
Litemax					
LMB/EX					
SITE					
A4					
SHEET					
1 - 1					
REV					
V1					

REV	ECON NO.	DESCRIPTION	SIGN	DATE