

SLO1768 V2

17" TFT LCD, LED Backlight 1600nits, SXGA (1280x1024)

17" TFT LCD panel, built-in 1600 nits high bright for sunlight readable LCD display, high transmittance color filter, high transmission polarizing plates, Low Power Consumption, suitable for kiosk, advertising, POS, marline, transportation, gaming, studio display, gas pump.



KEY FEATURES

- Sunlight Readable
- LED Backlight
- SXGA(1280x1024) High Definition
- High Shock & Vibration Resistance
- Low Power Consumption
- High Uniformity
- Low EMI Noise
- Wide Dimming
- Life Expectancy

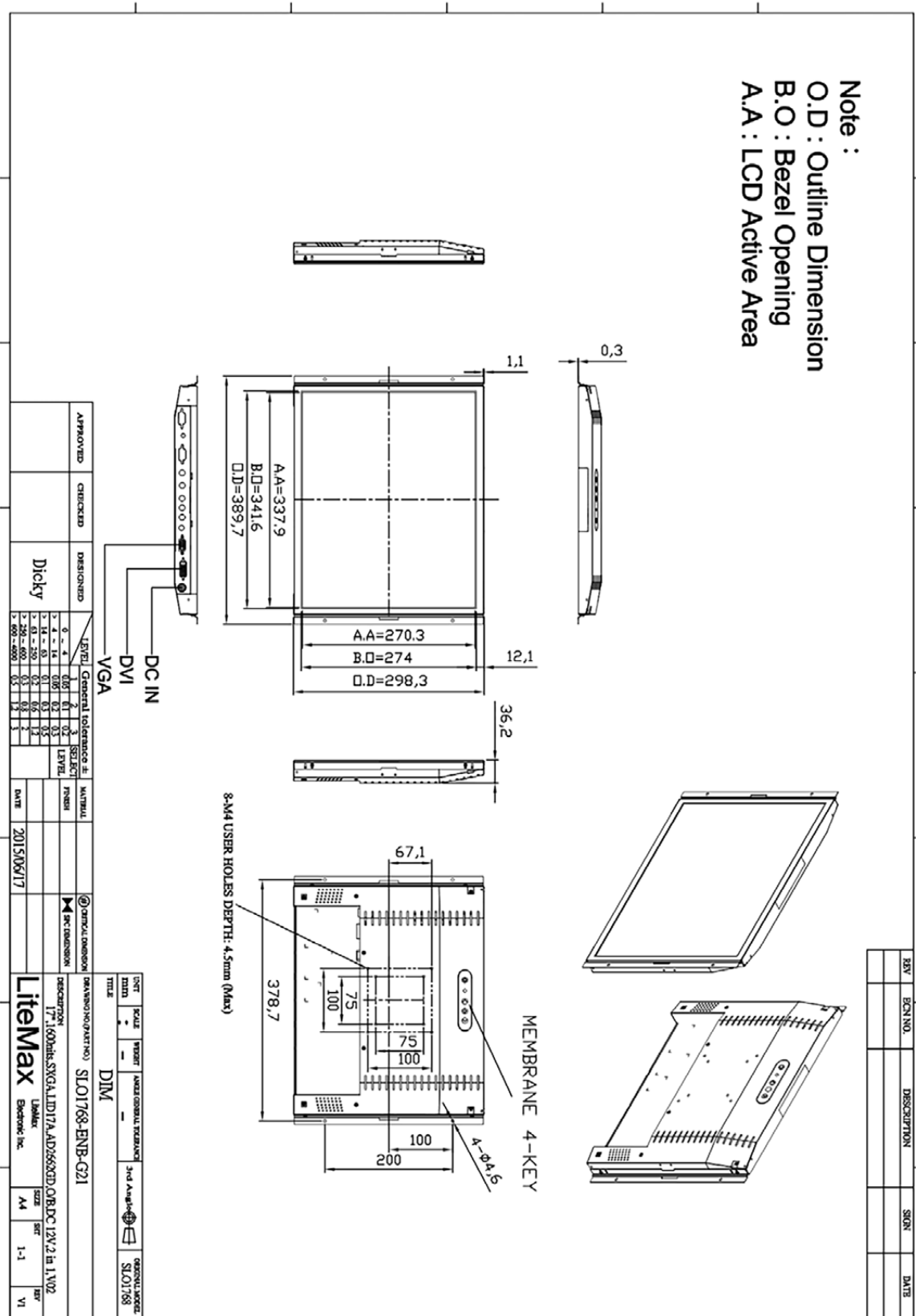
SPECIFICATIONS

| | |
|--------------------------------------|--|
| Model No. | SLO1768 V2 |
| Description | 17" TFT LCD, LED Backlight 1600nits,SXGA(1280x1024) |
| Display Area (mm) | 337.9(H) x 270.3(V) mm |
| Brightness | 1600 cd/m ² |
| Resolution | 1280x1024 (SXGA) |
| Contrast Ratio | 1000 : 1 |
| Pixel Pitch (mm) | 0.264(H) x 0.264(V) |
| Pixel Pre Inch (PPI) | 96 |
| Viewing Angle | 170°(H), 160°(V) |
| Color Saturation (NTSC) | 77% |
| Display Colors | 16.7M |
| Response Time (Typical) | 5ms |
| Sync | LVDS |
| Operating Temperature | 0°C ~ 50°C |
| Storage Temperature | -20°C ~ 60°C |
| Power Consumption | 32.5W |
| Dimensions (mm) | 358.5x298.3x36.2mm |
| Weight (Net) | 2.5kg |
| LED Driving Board | LID17A |
| Control Board (Optional) | <input type="checkbox"/> AD2662GDVAR <input type="checkbox"/> AD6038GD |
| <input type="checkbox"/> AD2662GDVAR | VGA+DVI (Optional S-Video/ Component / Audio) |
| F / R Control Button | <input type="checkbox"/> 4 Key |
| <input type="checkbox"/> 4 Key | Power Switch, Menu, Select (+,-), |
| OSD Menu | Brightness, Contrast, H/V Position, Color, Phase, Clock... |
| Optional | <input type="checkbox"/> AOT <input type="checkbox"/> Touch Screen |

*Specifications are subject to change without notice. **All brands or product names are trademarks or registered trademarks of their respective companies.

SLD/SLO = Panel+ LED Driving Board + Control Board + Housing

Note :
 O.D : Outline Dimension
 B.O : Bezel Opening
 A.A : LCD Active Area



| REV | ECN NO. | DESCRIPTION | SIGN. | DATE |
|-----|---------|-------------|-------|------|
| | | | | |

| APPROVED | CHECKED | DESIGNED | LEVEL | GENERAL TOLERANCE IS | MATERIAL | DATE |
|----------|---------|----------|-------|----------------------|----------|------------|
| | | Dicky | 1 | ±0.2 | | 2015/06/17 |

| UNIT | SCALE | REVISION | ANALYZE GENERAL TOLERANCE | 3rd Angle Projection | REVISION SYMBOL |
|------|-------|----------|---------------------------|----------------------|-----------------|
| MM | 1:1 | | | | |

TITLE DIM

DESCRIPTION 17" 1600x1200 SVGA LDD17A-AD3655GP OVB/DC 12V/2 In 1 W/2

Maker Litemax

Embodic Inc.

SIZE A4

SHEET 1-1

REV VI