

SLO1825 V2

18.5" Wide TFT LCD, LED Backlight 1000nits, WXGA

18.5" Wide open frame TFT LCD panel, built-in 1000 nits high bright for sunlight readable LCD display, high transmittance color filter, high transmission polarizing plates, Low Power Consumption, suitable for kiosk, advertising, POS, transportation, gaming, studio display, gas pump.



KEY FEATURES

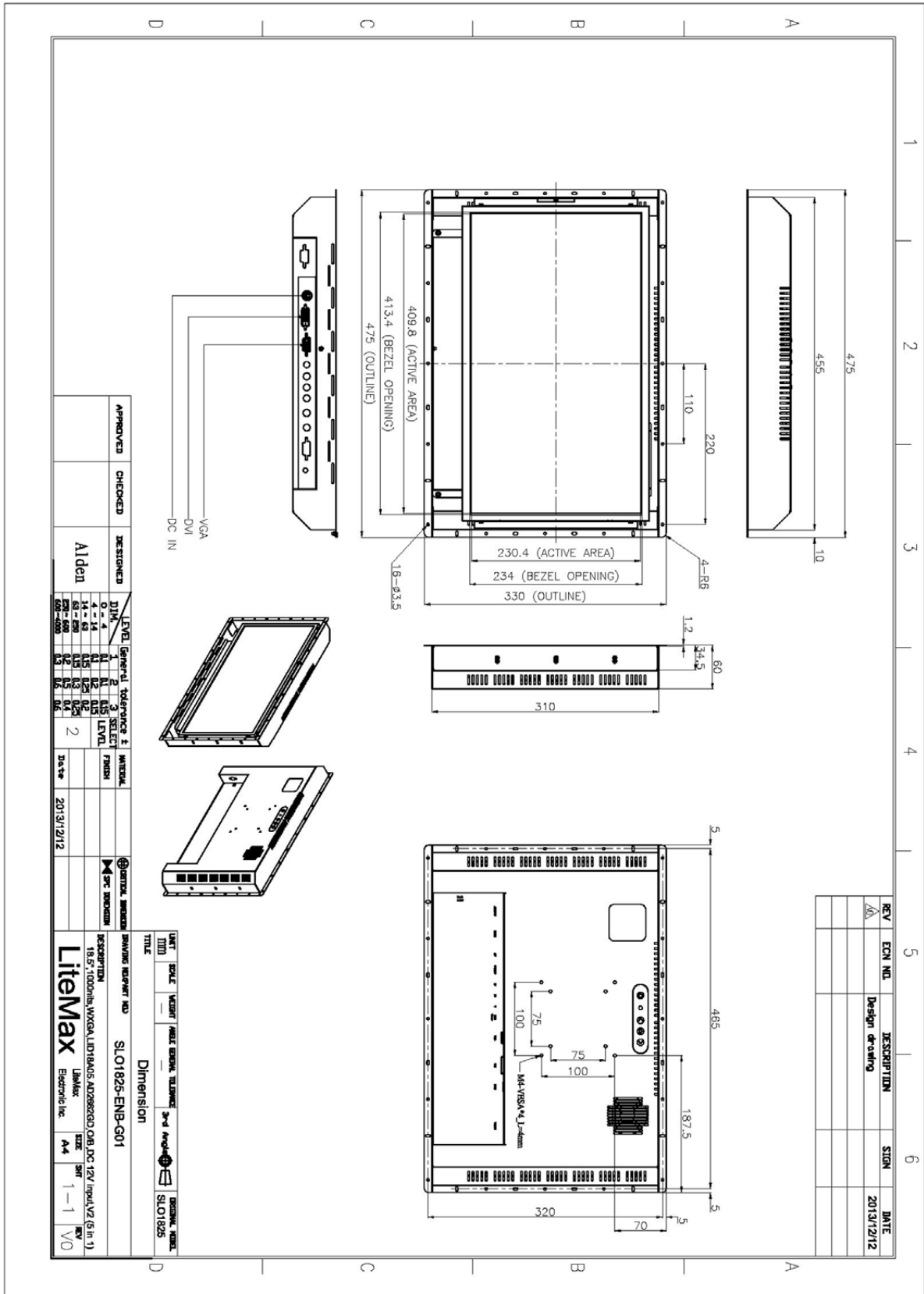
- Sunlight Readable
- LED Backlight
- High Shock & Vibration Resistance
- Low Power Consumption
- High Uniformity
- Low EMI Noise
- Wide Dimming

SPECIFICATIONS

| | |
|--------------------------------------|--|
| Model No. | SLO1825 V2 |
| Description | 18.5" Wide open frame TFT LCD, LED Backlight 1000nits, WXGA |
| Display Area (mm) | 409.8(h) x 230.4(v) mm |
| Brightness | 1000 cd/m ² |
| Resolution | 1366x768 (WXGA) |
| Contrast Ratio | 1250 : 1 |
| Pixel Pitch (mm) | 0.3(H) x 0.3(V) |
| Viewing Angle | +85°~-85°(H), +80°~-80°(V) |
| Display Colors | 16.7M |
| Response Time (Typical) | 5ms |
| Sync | LVDS |
| Power Consumption | 21W |
| Dimensions (mm) | 475x330x60 |
| Weight (Net) | 4Kg |
| LED Driving Board | LID 18A |
| Control Board (Optional) | <input type="checkbox"/> AD2662GD <input type="checkbox"/> AD2662GDVAR |
| <input type="checkbox"/> AD2662GD | VGA+DVI |
| <input type="checkbox"/> AD2662GDVAR | VGA+DVI +CVBS+S-Video+Audio+RS232 |
| F / R Control Button | <input type="checkbox"/> 4 Key <input type="checkbox"/> 5 Key |
| <input type="checkbox"/> 4 Key | Power Switch, Menu, Select (+,-), |
| <input type="checkbox"/> 5 Key | Power Switch, Menu, Select (+,-), Auto |
| OSD Menu | Brightness, Contrast, H/V Position, Color, Phase, Clock... |
| Optional | <input type="checkbox"/> AOT <input type="checkbox"/> Touch Screen |

*Specifications are subject to change without notice. **All brands or product names are trademarks or registered trademarks of their respective companies.

SLD/SLO = Panel+ LED Driving Board + Control Board + Housing



| APPROVED | CHECKED | DESIGNED | LEVEL | GENERAL TOLERANCE & FINISH | MATERIAL | VERTICAL DIMENSION | DRAWING NUMBER AND TITLE | DESCRIPTION | SCALE | DATE |
|----------|---------|----------|-------|--|----------|--------------------|--------------------------|-------------|------------|------|
| | | Alden | DIN 1 | 0-4 11 12 13 14 15 16 17 18 19 20 21 22 23 24 25 26 27 28 29 30 31 32 33 34 35 36 37 38 39 40 41 42 43 44 45 46 47 48 49 50 51 52 53 54 55 56 57 58 59 60 61 62 63 64 65 66 67 68 69 70 71 72 73 74 75 76 77 78 79 80 81 82 83 84 85 86 87 88 89 90 91 92 93 94 95 96 97 98 99 100 | FR300 | SPC DIMENSION | SLO1825-ENB-G01 | 1:1 | 2013/12/12 | |

| REV | ECN NO. | DESCRIPTION | SIGN | DATE |
|-----|---------|----------------|------|------------|
| 1 | | Design drawing | | 2013/12/12 |

| UNIT | SCALE | WEIGHT | PANEL GENERAL TOLERANCE | 3rd Angle | DESIGN NUMBER |
|------|-------|--------|-------------------------|-----------|---------------|
| mm | 1:1 | | | | SLO1825 |

DESCRIPTION: 18.5" 1000nits WQXGA LED1840S A02982GD 08B DPC 12V Input/V2 (5in 1)

Litemax Encoder Inc. A4 1-1 VO