

SLO 1954 V2

19" TFT LCD Open Frame Monitor, LED Backlight 1000nits, SXGA

SLO1954 V2 TFT LCD monitor, built-in 1000 nits high brightness for sunlight readable display. It offers the best visibility, performance and cost effective value. The high level of brightness together with the optimal contrast ratio renders high quality images and enhances legibility. With its fast response time and LED backlight technology, the monitor brings remarkable display quality and durability for your applications. Suitable for marine, military, medical, transportation, and industrial application.



KEY FEATURES

- Sunlight Readable
- LED Backlight
- High Shock & Vibration Resistance
- Low Power Consumption
- High Uniformity (90%)
- Low EMI Noise
- Wide Dimming
- Life Expectancy (70,000hrs)

APPLICATIONS

- Marine
- Military
- Medical
- Transportation
- Industrial

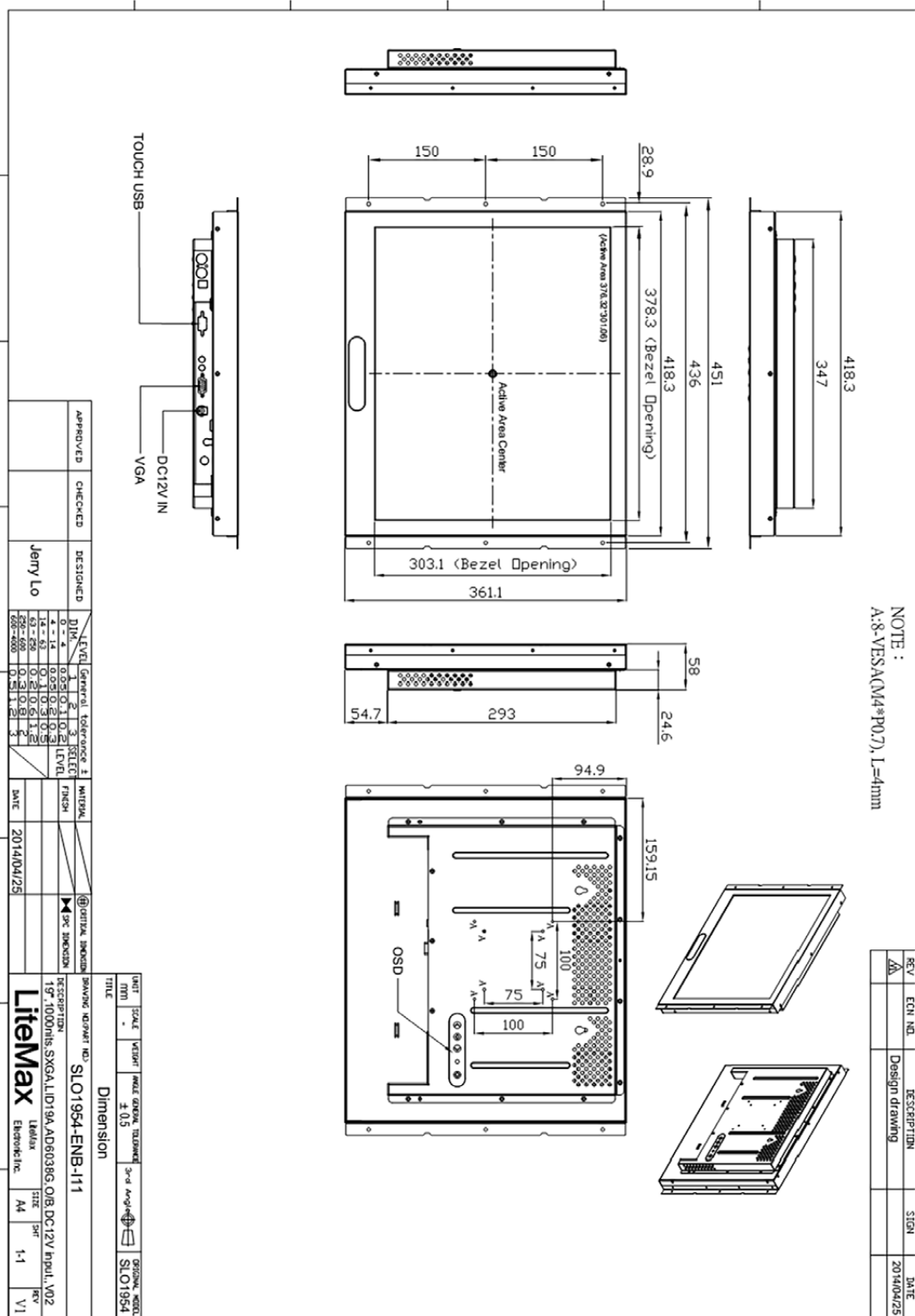
SPECIFICATIONS

Model No.	SLO1954 V2
Description	19" TFT LCD Monitor, LED Backlight 1000 nits, SXGA
Display Area (mm)	376.32 x 301.06 mm
Brightness	1000 cd/m ²
Resolution	1280x1024 (SXGA)
Contrast Ratio	1000 : 1
Pixel Pitch (mm)	0.294(H) x 0.294(V)
Viewing Angle	+85°~-85°(H), +80°~-80°(V)
Display Colors	16.7M
Response Time (Typical)	5ms
Power Input	DC-12V
Power Consumption	25W
Dimensions (mm)	451 x 361.1x 58 (SLO1954-ENB-I11 & I12) 451 x 343.08 x 58 (SLO1954-ENB-I13)
Weight (Net)	5.5 Kg
Control Board (Optional)	<input type="checkbox"/> AD6038GA <input type="checkbox"/> AD6038GD <input type="checkbox"/> AD2662GDHVA <input type="checkbox"/> AD2662GDVAR
<input type="checkbox"/> AD6038GA	VGA+Audio
<input type="checkbox"/> AD6038GD	VGA+DVI
<input type="checkbox"/> AD2662GDHVA	VGA+CVBS+S-Video+Audio (Optional DVI / Component)
<input type="checkbox"/> AD2662GDVAR	VGA+DVI (Optional S-Video/ Component / Audio)
F / R Control Button	<input type="checkbox"/> 4 Key <input type="checkbox"/> 5 Key
<input type="checkbox"/> 4 Key	Power Switch, Menu, Select (+,-),
<input type="checkbox"/> 5 Key	Power Switch, Menu, Select (+,-), Auto
OSD Menu	Brightness, Contrast, H/V Position, Color, Phase, Clock...
Optional	<input type="checkbox"/> AOT <input type="checkbox"/> Touch Screen <input type="checkbox"/> Waterproof

*Specifications are subject to change without notice. **All brands or product names are trademarks or registered trademarks of their respective companies.

SLD/SLO = Panel+ LED Driving Board + Control Board + Housing

SLO1954-ENB-I11

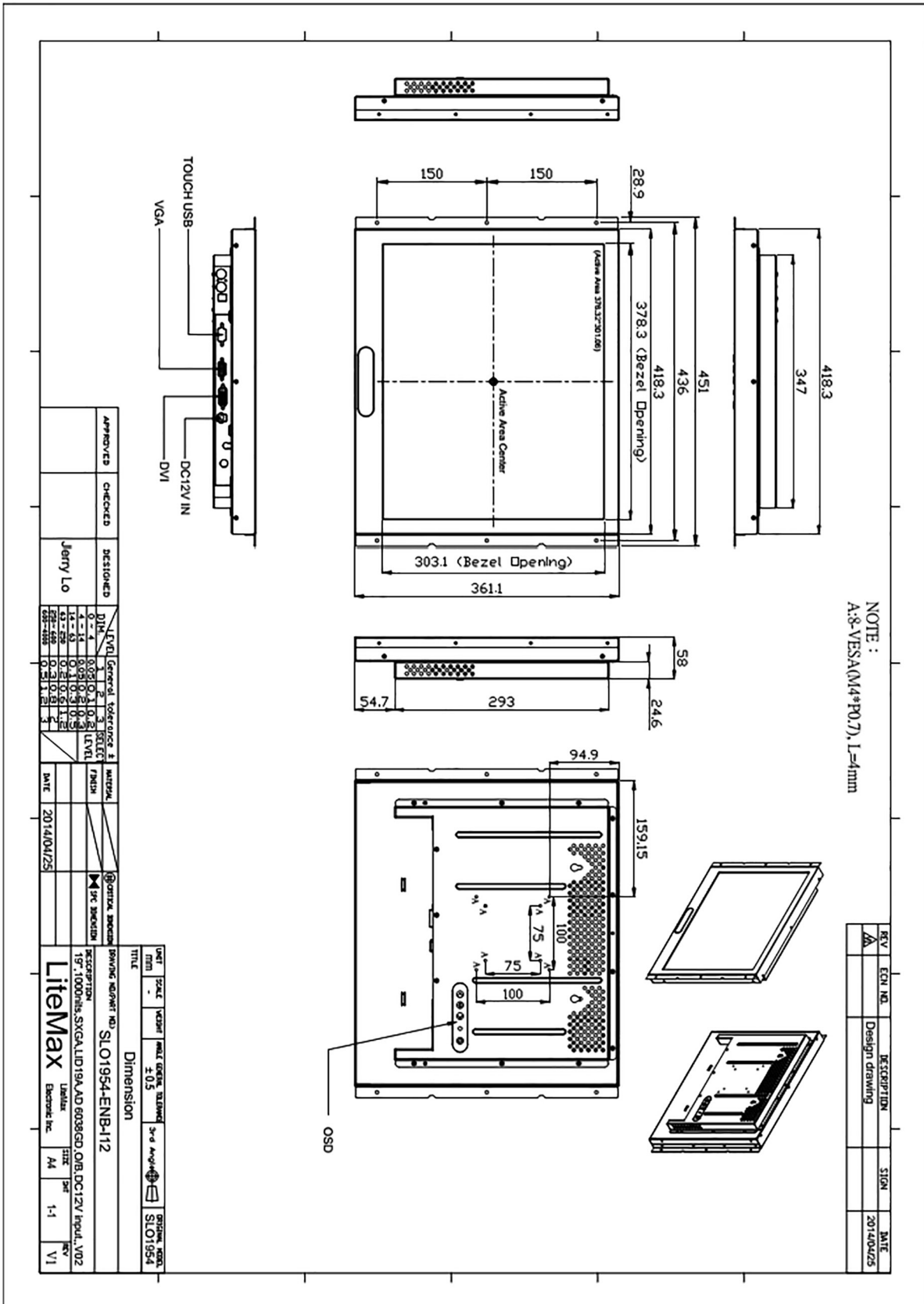


APPROVED	CHECKED	DESIGNED	Jerry Lo
DATE	DATE	DATE	DATE
2014/04/25			

UNIT	SCALE	VERSION	MODEL NUMBER	TOLERANCE	3rd Angle Projection	SECTION	DATE
MM	1:1		SLO1954-ENB-I11	± 0.15		SLO1954	2014/04/25

DESCRIPTION	19" 1000nits SXGA LID19A, AD60386 OIB, DC12V PPUL, V02
BRAND	LiteMax
MODEL NO.	SLO1954-ENB-I11
DATE	2014/04/25
DESIGNER	Jerry Lo
CHECKER	
APPROVER	

REV	ECN NO.	DESCRIPTION	SIGN	DATE
1		Design drawing		2014/04/25



NOTE :
A:8-VESA(M4*P0.7), L=4mm

REV	ECN NO.	DESCRIPTION	SION	DATE
A		Design drawing		2014/04/25

APPROVED	CHECKED	DESIGNED	DATE
		Jerry Lo	2014/04/25

UNIT	SCALE	VECTOR	FILE	DATE	VERSION	REVISION	DESCRIPTION
mm	-			2014/04/25	1.0		Design drawing

LEVEL	DATE	DESCRIPTION
1	2014/04/25	Initial Design

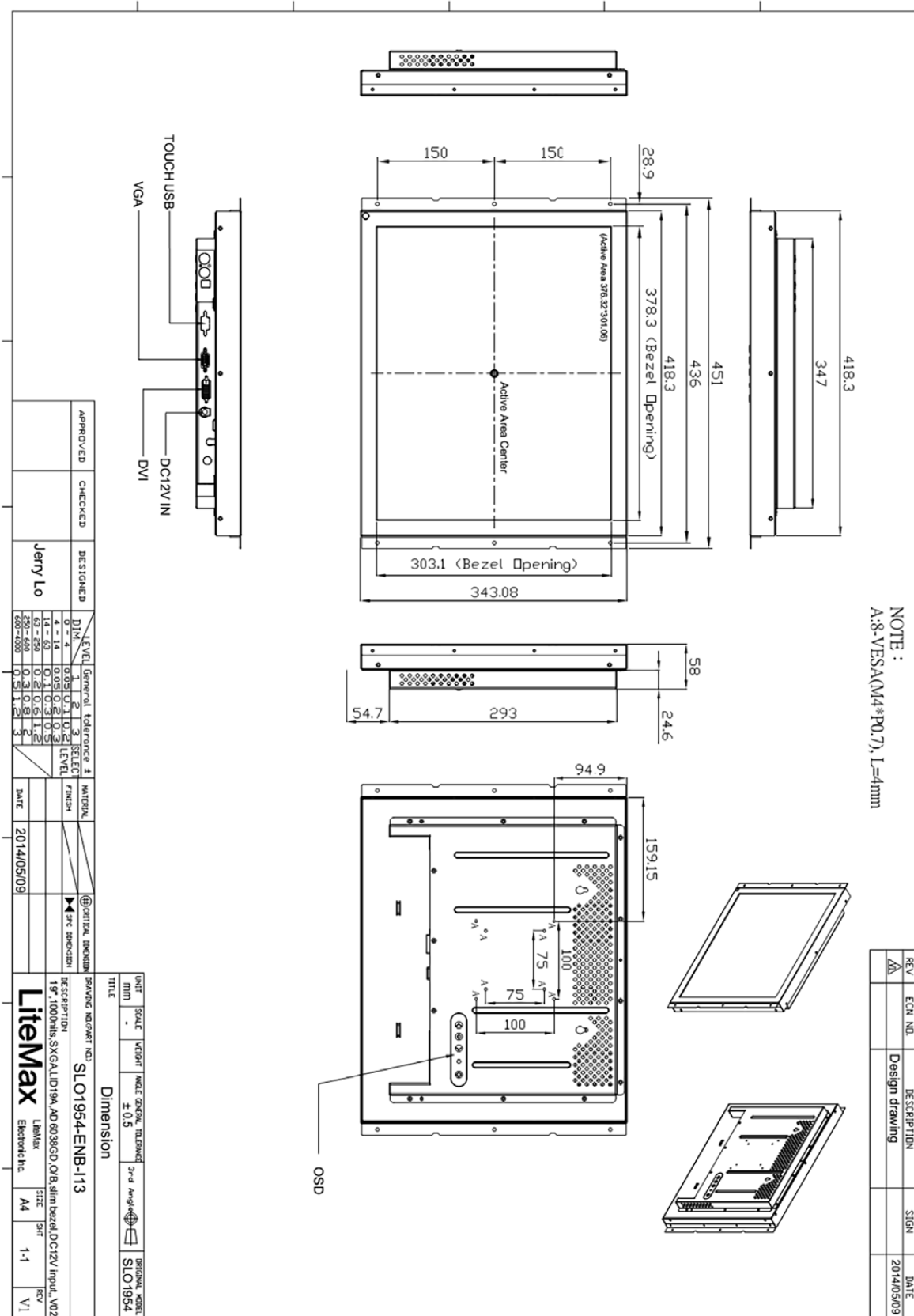
DATE	DESCRIPTION
2014/04/25	Design drawing

DATE	DESCRIPTION
2014/04/25	Design drawing

DATE	DESCRIPTION
2014/04/25	Design drawing

DATE	DESCRIPTION
2014/04/25	Design drawing

SLO1954-ENB-I13



NOTE :
A:8-VESA(M4*P0.7), L=4mm

REV	ECN NO.	DESCRIPTION	SIGN	DATE
1		Design drawing		2014/05/09

APPROVED	CHECKED	DESIGNED	DATE
		Jerry Lo	2014/05/09

UNIT	SCALE	WEIGHT	INDEL GENERAL TOLERANCE	3rd ANGLE	ORIGINAL MODEL
MM	-	± 0.5	± 0.5	SLO1954	SLO1954

TITLE	DESCRIPTION	DATE	REV
Dimension	19" Slim Bezel DC12V Input, V02	2014/05/09	V1

LEVEL	GENERAL TOLERANCE	SELECT	MATERIAL
0-4	± 0.5	3	
4-13	± 0.3	2	
13-25	± 0.2	1	
25-50	± 0.1	0	
50-100	± 0.05	0	
100-200	± 0.02	0	
200-500	± 0.01	0	
500-1000	± 0.005	0	

DESCRIPTION	DATE	REV
19" Slim Bezel DC12V Input, V02	2014/05/09	V1

DESCRIPTION	DATE	REV
19" Slim Bezel DC12V Input, V02	2014/05/09	V1

DESCRIPTION	DATE	REV
19" Slim Bezel DC12V Input, V02	2014/05/09	V1

DESCRIPTION	DATE	REV
19" Slim Bezel DC12V Input, V02	2014/05/09	V1

DESCRIPTION	DATE	REV
19" Slim Bezel DC12V Input, V02	2014/05/09	V1

DESCRIPTION	DATE	REV
19" Slim Bezel DC12V Input, V02	2014/05/09	V1

DESCRIPTION	DATE	REV
19" Slim Bezel DC12V Input, V02	2014/05/09	V1

DESCRIPTION	DATE	REV
19" Slim Bezel DC12V Input, V02	2014/05/09	V1

DESCRIPTION	DATE	REV
19" Slim Bezel DC12V Input, V02	2014/05/09	V1

DESCRIPTION	DATE	REV
19" Slim Bezel DC12V Input, V02	2014/05/09	V1

DESCRIPTION	DATE	REV
19" Slim Bezel DC12V Input, V02	2014/05/09	V1

DESCRIPTION	DATE	REV
19" Slim Bezel DC12V Input, V02	2014/05/09	V1

DESCRIPTION	DATE	REV
19" Slim Bezel DC12V Input, V02	2014/05/09	V1

DESCRIPTION	DATE	REV
19" Slim Bezel DC12V Input, V02	2014/05/09	V1

DESCRIPTION	DATE	REV
19" Slim Bezel DC12V Input, V02	2014/05/09	V1

DESCRIPTION	DATE	REV
19" Slim Bezel DC12V Input, V02	2014/05/09	V1

DESCRIPTION	DATE	REV
19" Slim Bezel DC12V Input, V02	2014/05/09	V1

DESCRIPTION	DATE	REV
19" Slim Bezel DC12V Input, V02	2014/05/09	V1

DESCRIPTION	DATE	REV
19" Slim Bezel DC12V Input, V02	2014/05/09	V1

DESCRIPTION	DATE	REV
19" Slim Bezel DC12V Input, V02	2014/05/09	V1

DESCRIPTION	DATE	REV
19" Slim Bezel DC12V Input, V02	2014/05/09	V1

DESCRIPTION	DATE	REV
19" Slim Bezel DC12V Input, V02	2014/05/09	V1

DESCRIPTION	DATE	REV
19" Slim Bezel DC12V Input, V02	2014/05/09	V1

DESCRIPTION	DATE	REV
19" Slim Bezel DC12V Input, V02	2014/05/09	V1