

SLO2118

21.5" Wide TFT LCD, LED Backlight 1600nits, FHD (1920x1080)

21.5" wide is a full high definition (FHD) LCD panel, built-in 1600 nits high bright for sunlight readable LCD display, high transmittance color filter, high transmission polarizing plates, Low Power Consumption, suitable for kiosk, advertising, POS, marine, transportation, gaming, studio display, gas pump.



KEY FEATURES

- Sunlight Readable
- LED Backlight
- High Shock & Vibration Resistance
- Low Power Consumption
- High Uniformity
- Low EMI Noise
- Wide Dimming
- Life Expectancy

APPLICATIONS

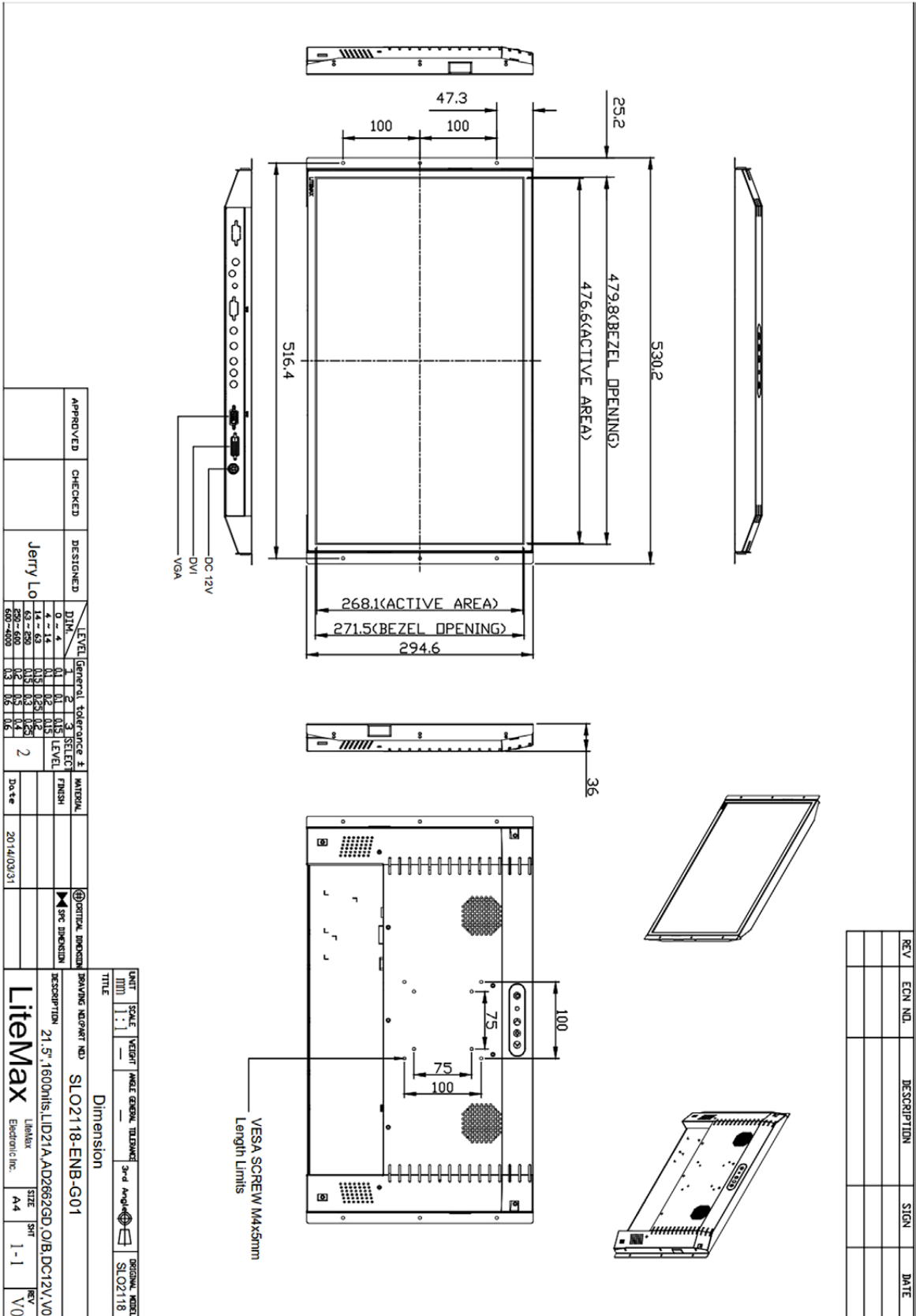
- Marine
- Military
- Medical
- Transportation
- Industrial

SPECIFICATIONS

Model No.	SLO2118
Description	21.5" Wide TFT LCD, LED Backlight 1600 nits, FHD
Display Area (mm)	476.64 (H) x 268.11(V)
Brightness	1600 cd/m ²
Resolution	1920 x 1080 (FHD)
Contrast Ratio	900 : 1
Pixel Pitch (mm)	0.24825(H) x 0.24825(V)
Viewing Angle	170°(H), 160°(V)
Display Colors	16.7M
Response Time (Typical)	5ms
Sync	LVDS
Power Consumption	41W
Dimensions (mm)	530.2(W) x 294.6(H) x 36(D)mm
Weight (Net)	5.2Kg
LED Driving Board	LID21A
Control Board (Optional)	<input type="checkbox"/> AD2662GD <input type="checkbox"/> AD2662GDVAR
<input type="checkbox"/> AD2662GD	VGA+DVI
<input type="checkbox"/> AD2662GDVAR	VGA+DVI (Optional S-Video/ Component / Audio / RS232)
F / R Control Button	<input type="checkbox"/> 4 Key <input type="checkbox"/> 5 Key
<input type="checkbox"/> 4 Key	Power Switch, Menu, Select (+,-),
<input type="checkbox"/> 5 Key	Power Switch, Menu, Select (+,-), Auto
OSD Menu	Brightness, Contrast, H/V Position, Color, Phase, Clock...
Optional	<input type="checkbox"/> AOT <input type="checkbox"/> Touch Screen

*Specifications are subject to change without notice. **All brands or product names are trademarks or registered trademarks of their respective companies.

SLD/SLO = Panel+ LED Driving Board + Control Board + Housing



APPROVED	CHECKED	DESIGNED	DATE
		Jerry Lo	2014/03/31

LEVEL	GENERAL TOLERANCE	SELECT	MATERIAL
0-4	0.1	0.1	
5-10	0.15	0.15	
11-20	0.2	0.2	
21-30	0.25	0.25	
31-40	0.3	0.3	
41-50	0.4	0.4	
51-60	0.5	0.5	
61-70	0.6	0.6	
71-80	0.8	0.8	
81-90	1.0	1.0	
91-100	1.2	1.2	

UNIT	SCALE	VECT	ANG	GEN	TOL	TRIM	3rd	ANG	TRIM	ORIGINAL MODEL
MM	1:1									SLO2118

TITLE
Dimension

DRAWING NO./PART NO.
SLO2118-ENB-G01

DESCRIPTION
21.5" 1600x1200 LID21A AD26623GD O/B DC12V V01

SIZE
A4

REV
1-1

REV
V0

REV	ECON NO.	DESCRIPTION	SIGN	DATE