

SLO3245 V2

32" Wide Open Frame TFT LCD Display, LED Backlight, 1200nits, WXGA

SLO3245 V2 is a wide open frame LCD display, built-in 1200nits high brightness for sunlight readable application. It offers the best visibility, performance and cost effective value. The high level of brightness together with fast response time and LED backlight technology, the monitor brings remarkable display quality. And guaranteeing product life cycle longevity, stability, and reliability.



KEY FEATURES

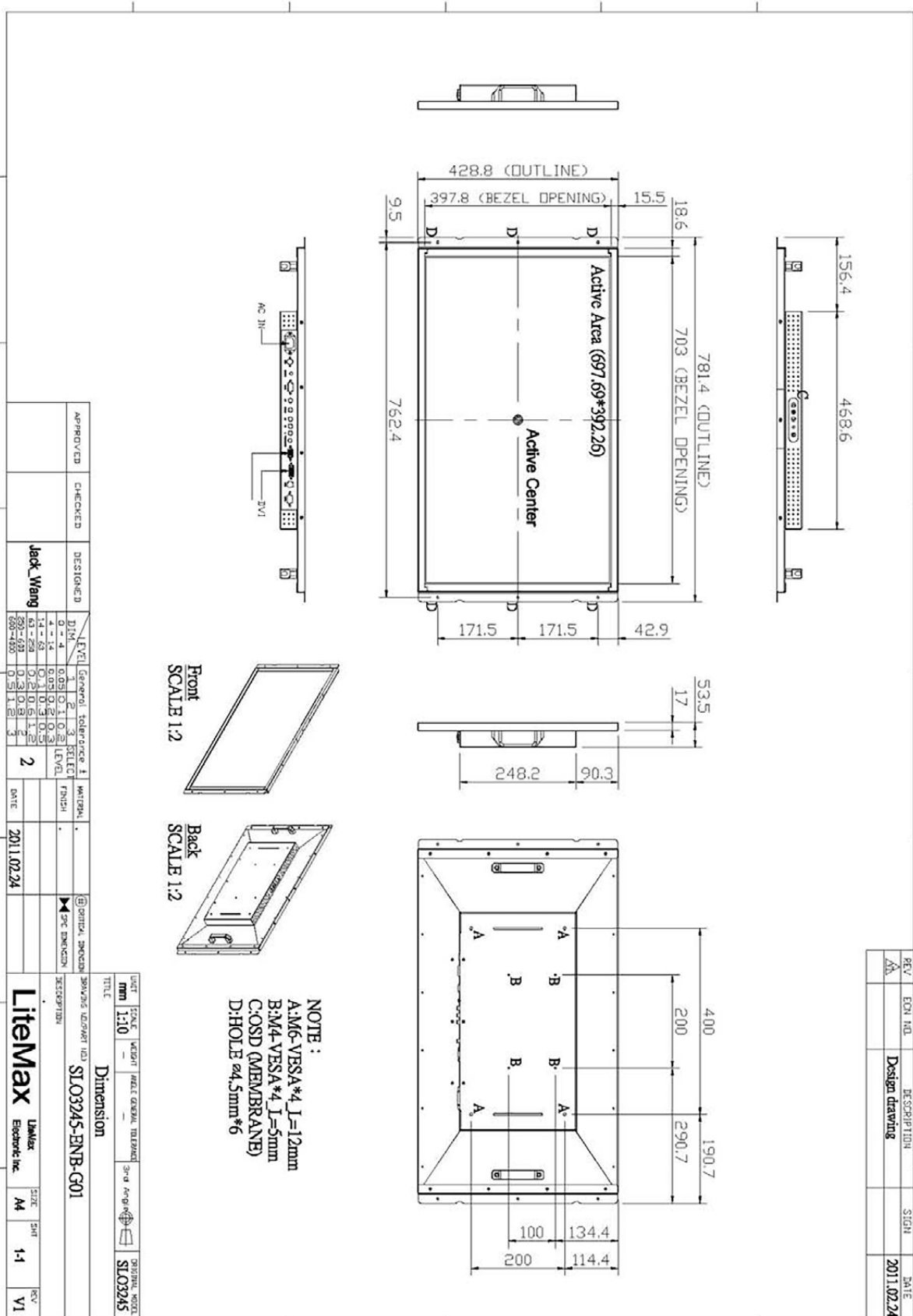
- Sunlight Readable
- LED Backlight
- High Shock & Vibration Resistance
- Low Power Consumption
- High Uniformity
- Low EMI Noise
- Wide Dimming
- Life Expectancy

SPECIFICATIONS

Model No.	SLO3245 V2
Description	32" Wide Open Frame TFT LCD Display, LED Backlight, 1200 nits, WXGA
Display Area (mm)	697.7 (H) x 392.3(V) mm
Brightness	1200 cd/m ²
Resolution	1366 x 768
Contrast Ratio	5000 : 1
Pixel Pitch (mm)	0.51(H) x 0.51(V)
Viewing Angle	176°(H), 176°(V)
Display Colors	16.7M
Response Time (Typical)	7ms (Typical)
Power Input	AC 100V-240V
Power Consumption	82W
Dimensions (mm)	781.4x428.8x53.5mm
Weight (Net)	10Kg
LED Driving Board	LID32A
Control Board (Optional)	<input type="checkbox"/> AD2662GDHVA <input type="checkbox"/> AD2662GDVAR <input type="checkbox"/> AD2662GDHMVAR
<input type="checkbox"/> AD2662GDHVA	VGA+CVBS+S-Video+Audio (Optional DVI / HDMI)
<input type="checkbox"/> AD2662GDVAR	VGA+DVI (Optional CVBS / S-Video/ Component / Audio)
<input type="checkbox"/> AD2662GDHMVAR	VGA (Optional CVBS / S-Video/ Component / Audio / DVI / HDMI)
F / R Control Button	<input type="checkbox"/> 4 Key <input type="checkbox"/> 5 Key
<input type="checkbox"/> 4 Key	Power Switch, Menu, Select (+,-),
<input type="checkbox"/> 5 Key	Power Switch, Menu, Select (+,), Auto
OSD Menu	Brightness, Contrast, H/V Position, Color, Phase, Clock...
Optional	<input type="checkbox"/> AOT <input type="checkbox"/> Touch Screen

*Specifications are subject to change without notice. **All brands or product names are trademarks or registered trademarks of their respective companies.

SLD/SLO = Panel+ LED Driving Board + Control Board + Housing



REV	EDN NO.	DESCRIPTION	SIGN	DATE
AA		Design drawing		2011.02.24

APPROVED	CHECKED	DESIGNED	DATE
		Jack Wang	2011.02.24

LEVEL	General	Tolerance	FINISH
0-4	1	0.03	3
4-14	2	0.05	2
14-26	3	0.1	1
26-52	4	0.15	0.5
52-69	5	0.2	0.3
69-85	6	0.3	0.2
85-100	7	0.5	1

UNIT	SCALE	WEIGHT	FIELD SYMBOL	3rd Angle	ORIGINAL MODEL
mm	1:10				SLO3245

TITLE	DESCRIPTION
Dimension	SLO3245-ENB-G01

DATE	SIZE	SHEET	REV
2011.02.24	A4	1-1	V1

NOTE:
 A:M6-YESSA*4 J=12mm
 B:M4-YESSA*4 J=5mm
 C:OSD (MEMBRANE)
 D:HOLE ø4.5mm*6