

# SLO3255 V4

32" Wide TFT LCD Display, LED Backlight, 1000nits, FHD

SLO3255 V4 is a wide LCD display, built-in 1000nits high brightness for sunlight readable application. It offers the best visibility, performance and cost effective value. The high level of brightness together with fast response time and LED backlight technology, the monitor brings remarkable display quality. And guaranteeing product life cycle longevity, stability, and reliability.



## KEY FEATURES

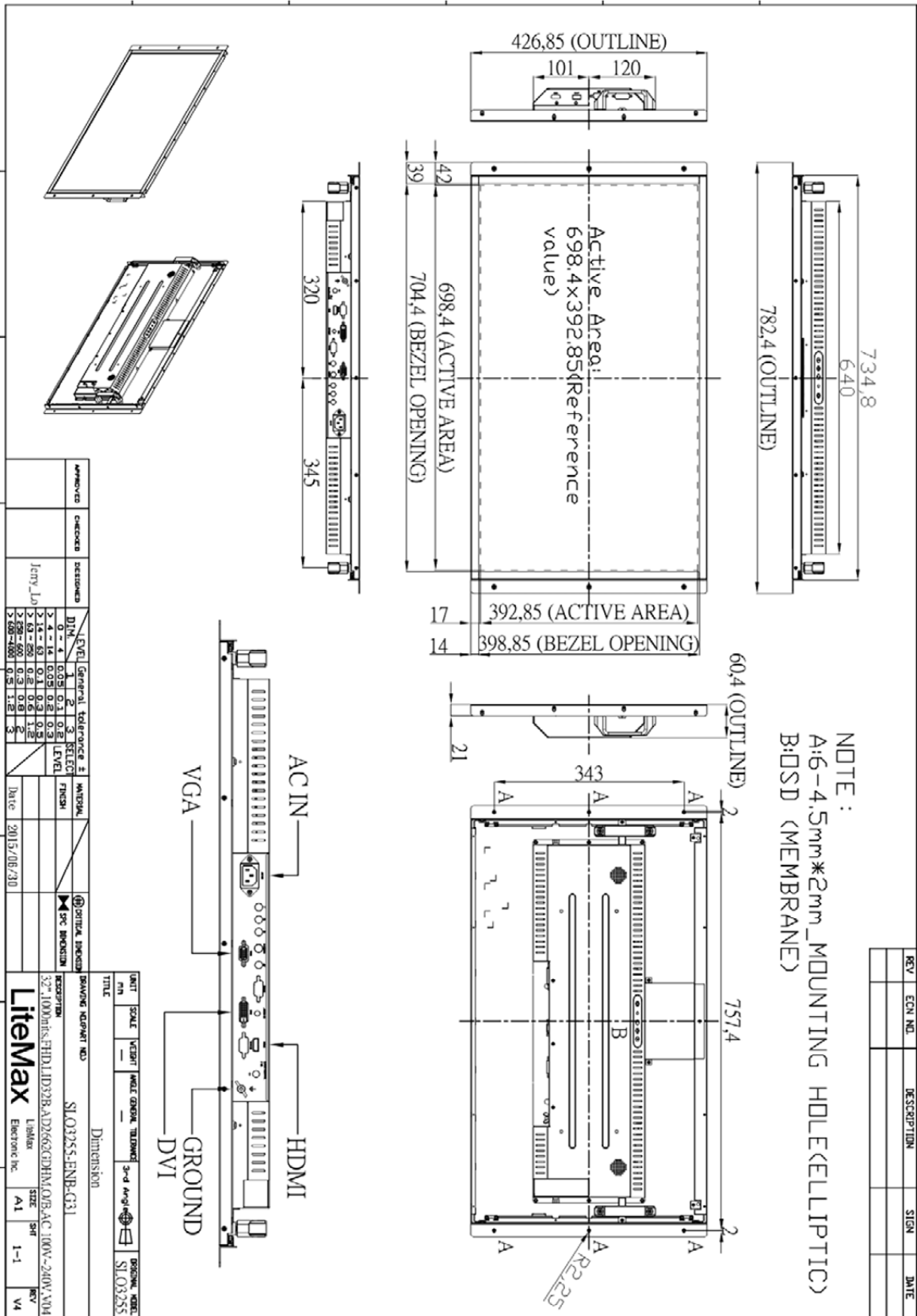
- Sunlight Readable
- LED Backlight
- FHD Resolution
- High Shock & Vibration Resistance
- Low EMI Noise
- Wide Dimming
- Wide Viewing Angle
- Life Expectancy
- Fanless Design

## SPECIFICATIONS

Model No.	SLO3255 V4
Description	32" Wide TFT LCD Display, LED Backlight, 1000 nits, FHD
Display Area (mm)	698.4 (H) x 392.85(V) mm
Brightness	1000 cd/m <sup>2</sup>
Resolution	1920 x 1080
Contrast Ratio	5800 : 1
Pixel Pitch (mm)	0.3637 (H) x 0.3637 (V)
Pixel Pre Inch (PPI)	70
Viewing Angle	178°(H), 178°(V)
Color Saturation (NTSC)	80%
Display Colors	16.7M
Response Time (Typical)	8 ms (Typical)
Sync	LVDS
Operating Temperature	0°C ~ 50°C
Storage Temperature	-20°C ~ 60°C
Power Consumption	71w
Dimensions (mm)	782.4 x 426.85 x 60.4mm
Weight (Net)	12.0Kg
LED Driving Board	LID32B
Control Board (Optional)	<input type="checkbox"/> AD2662GDHMVAR
<input type="checkbox"/> AD2662GDHMVAR	VGA (Optional CVBS / S-Video/ Component / Audio / DVI / HDMI)
F / R Control Button	<input type="checkbox"/> 4 Key
<input type="checkbox"/> 4 Key	Power Switch, Menu, Select (+,-),
OSD Menu	Brightness, Contrast, H/V Position, Color, Phase, Clock...
Optional	<input type="checkbox"/> AOT <input type="checkbox"/> Touch Screen

\*Specifications are subject to change without notice. \*\*All brands or product names are trademarks or registered trademarks of their respective companies.

SLD/SLO = Panel+ LED Driving Board + Control Board + Housing



NOTE:  
 A: 6-4.5mm\*2mm\_MOUNTING\_HOLE(ELLIPTIC)  
 B: DSD (MEMBRANE)

REV	ECN NO.	DESCRIPTION	SIGN	DATE

APPROVED	CHECKED	DESIGNED	DATE	LEVEL	GENERAL TOLERANCE	FINISH	SPC	DRIVING ADAPT NO.
		Jerry Liu	2015/06/30	1	0.1			SL03255-ENB-G31
				2	0.05			
				3	0.1			
				4	0.05			
				5	0.1			
				6	0.1			
				7	0.1			
				8	0.1			
				9	0.1			
				10	0.1			

UNIT	SCALE	VELOCITY	WAVELENGTH	TOLERANCE	3-d Ang	DRAGON	NO.
mm	1:1					SL03255	

TITLE	DESCRIPTION	DATE	REV
Dimension	32" 1000hrs.FHD.L1D32B.AD266ZGHM.ORB.AC 100V-240V.V04		

LINKER	SIZE	SHT	REV
LitexMax	A1	1-1	V4

LINKER	SIZE	SHT	REV
LitexMax	A1	1-1	V4