

SSD1033

9.98" Resizing LCD Display, Brightness is 700 nits,
LED backlight, 800x200 ultra wide aspect ratio 16:3

SSD1033 is an innovative ultra-wide, LED backlight LCD module. It provides LCD panel with specific ratios for digital signage, public transportation, exhibition hall, department store, and vending machine applications.



KEY FEATURES

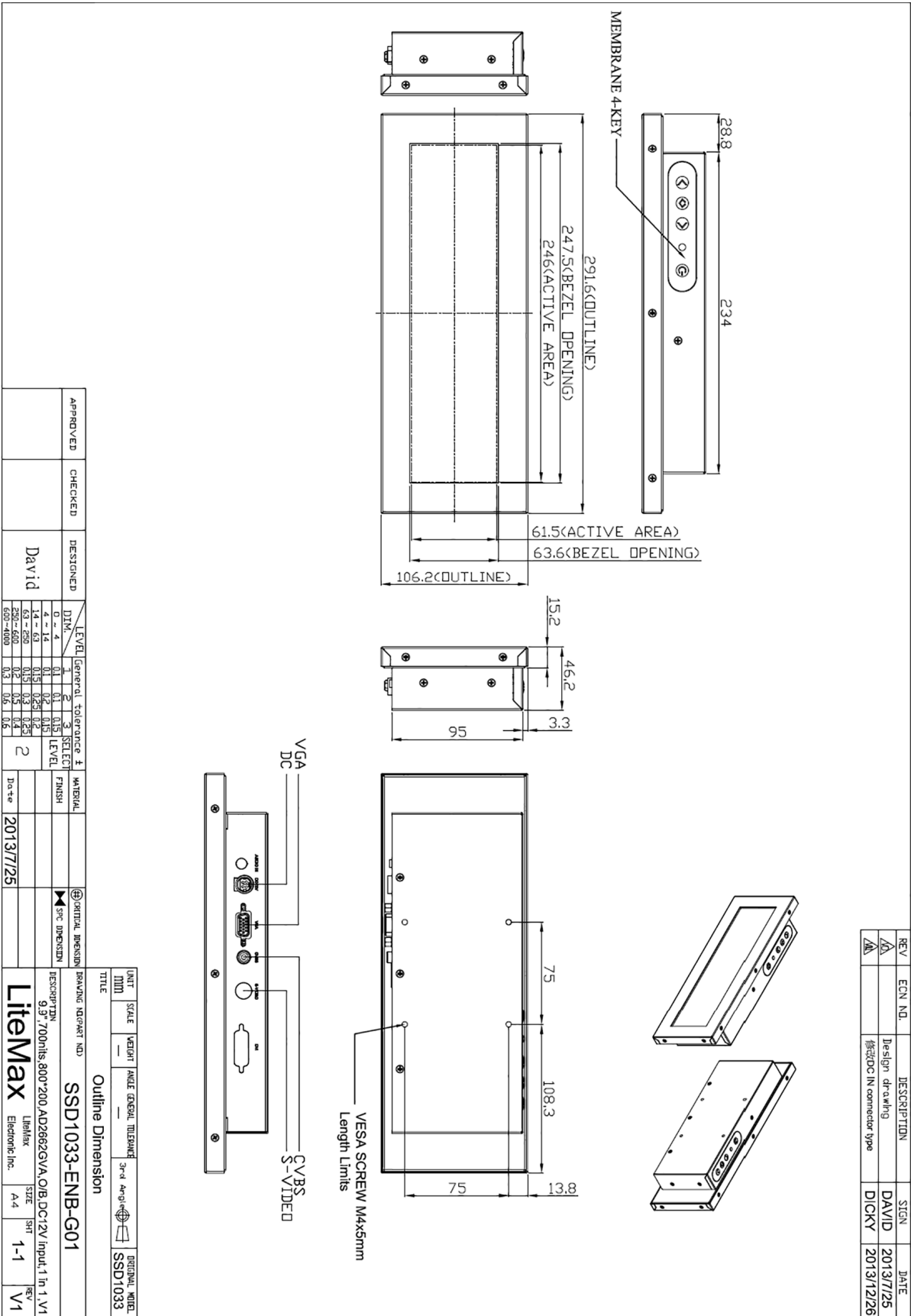
- Resizing LCD
- Ultra Wide Screen (16 : 3)
- LED Backlight
- High Brightness 700nits
- Low Power Consumption
- High Uniformity
- Wide Dimming

SPECIFICATIONS

Model No.	SSD1033
Description	9.98" Resizing LCD Display, 700nits, LED backlight, 800x200
Display Area (mm)	246.6x 61.5 mm
Brightness	700nits
Resolution	800 x 200
Aspect Ratio	16 : 3
Contrast Ratio	600 : 1
Pixel Pitch (mm)	0.3075 x 0.3075
Viewing Angle	160°(H), 135°(V)
Display Colors	262K
Response Time (Typical)	35 ms
Power Consumption	9.6W
Dimensions (mm)	291x106.2x46.2mm
Weight (Net)	1.2Kg
LED Driving Board	On module
Control Board (Optional)	<input type="checkbox"/> AD2662GVA <input type="checkbox"/> AD2662GVA + (DVI/ RS232)
<input type="checkbox"/> AD2662GV	VGA+S□Video+AV
<input type="checkbox"/> AD2662GVA	VGA+S□Video+AV+Audio
<input type="checkbox"/> AD2662GVA + (DVI/ RS232)	VGA+S□Video+AV+Audio (Optional DVI/ RS232)
F/R Control Button	<input type="checkbox"/> 4 Key
<input type="checkbox"/> 4 Key	Power Switch, Menu, Select (+,-),
OSD Menu	Brightness, Contrast, H/V Position, Color, Phase, Clock...
Optional	<input type="checkbox"/> AOT <input type="checkbox"/> Touch Screen

*Specifications are subject to change without notice. All brands or product names are trademarks or registered trademarks of their respective companies.

SSD= Panel+ LED Driving Board + Control Board + Housing



REV	ECN NO.	DESCRIPTION	SIGN	DATE
1		Design drawing	DAVID	2013/7/25
2		修正DC IN connector type	DICKY	2013/12/26

APPROVED	CHECKED	DESIGNED	DATE	LEVEL	GENERAL TOLERANCE ±	SELECT FINISH	ORIENTAL REGION	DRAWING NO/PART NO	DESCRIPTION	UNIT	SCALE	WEIGHT	ANGLE	GENERAL TOLERANCE	3rd ANGLE	DRAWING NOBEL
		David		2	DIN	1 2 3		SSD1033-ENB-G01	9.0" 700ohis 800*200 AD2682GVA OIB DC12V Input 1 In 1 V1	MM						SSD1033
					0 - 4	0.1	0.1									
					4 - 14	0.1	0.2									
					14 - 63	0.15	0.25									
					63 - 250	0.3	0.5									
					250 - 600	0.5	0.8									
					600 - 1000	0.7	1.0									

LithMax	Electronic Inc.	SIZE	REV
A4	1-1	V1	