

SSD2735-A

27.3" Resizing LCD, 1000 nits LED backlight, 945x1080 Square aspect ratio 8:9

SSD2735-A is an innovative Square, sunlight readable, LED backlight LCD display. It provides LCD panel with specific ratios for digital signage, public transportation, exhibition hall, department store, vending machine and industrial applications. Incorporating with A.D. control board and backlight design, it is high brightness and sunlight readable panel, can display high-quality video with energy-efficient.



KEY FEATURES

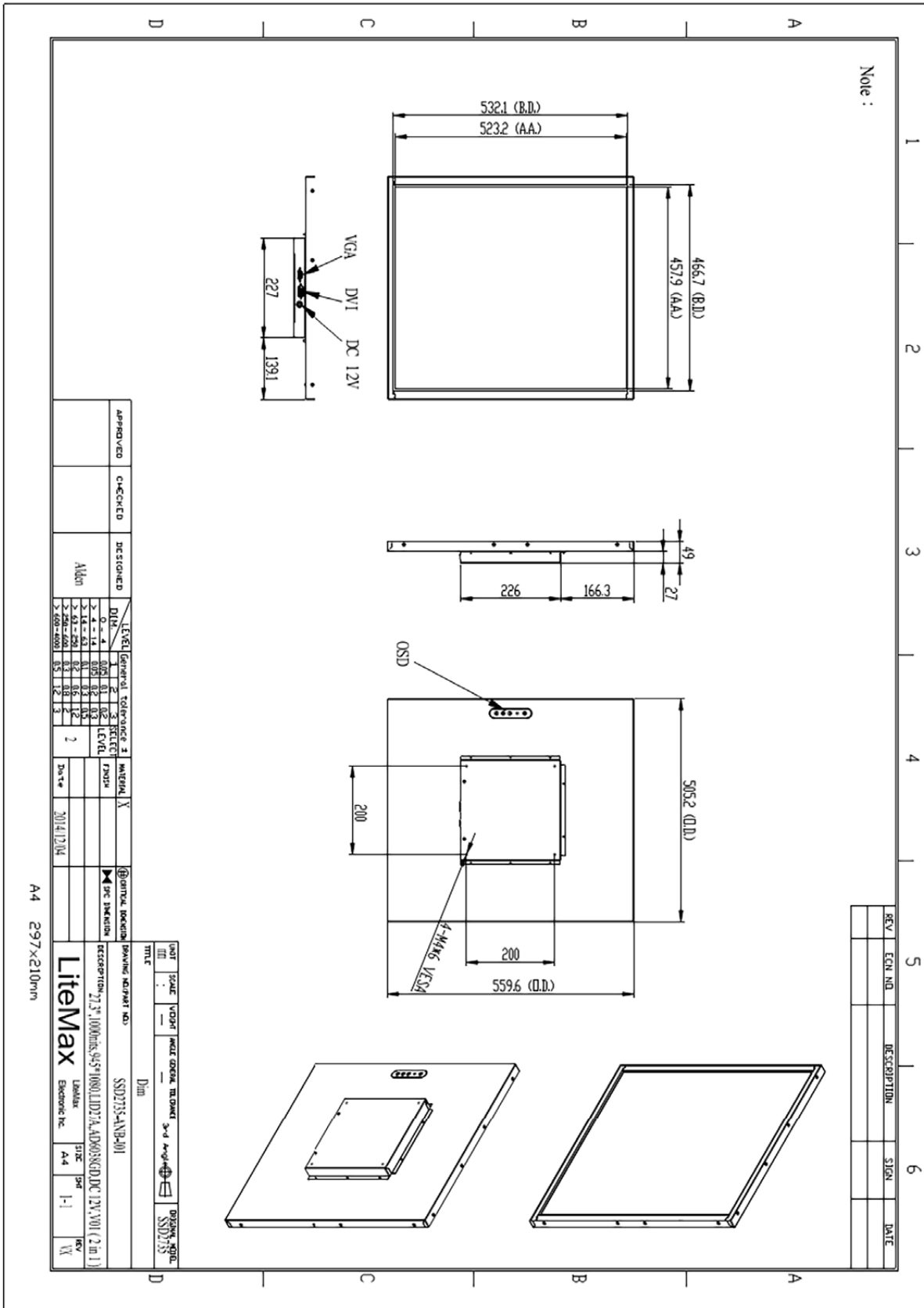
- Resizing LCD
- Square Screen (8 : 9)
- Sunlight Readable
- LED Backlight
- High Brightness 1000 nits
- Low Power Consumption
- Wide Dimming
- Slim Bezel
- Life Expectancy (70,000hrs)
- Wide Viewing Angle

SPECIFICATIONS

Model No.	SSD2735-A
Description	27.3" Resizing LCD, 1000 nits LED backlight, 945x1080
Display Area (mm)	457.85*523.26 mm
Brightness	1000 cd/m ²
Resolution	945 x 1080
Aspect Ratio	8 : 9
Contrast Ratio	3000:1
Pixel Pitch (mm)	0.4845 (H) x 0.4845(W)
Viewing Angle	178°(H), 178°(V)
Display Colors	16.7M
Response Time (Typical)	6.5 ms
Sync	LVDS
Power Consumption	50W
Dimensions (mm)	505.2 x 559.6 x 49
Weight (Net)	10.5kg
LED Driving Board	LID27A
Control Board (Optional)	<input type="checkbox"/> AD6038GD
<input type="checkbox"/> AD6038GD	VGA+DVI
F/R Control Button	<input type="checkbox"/> 5 Key/4 Key
<input type="checkbox"/> 4 Key	Power Switch, Menu, Select (+,-),
OSD Menu	Brightness, Contrast, H/V Position, Color, Phase, Clock...
Optional	N/A

*Specifications are subject to change without notice. **All brands or product names are trademarks or registered trademarks of their respective companies.

SSD= Panel+ LED Driving Board + Control Board + Housing



Note :

REV	ECN NO	DESCRIPTION	SIGN	DATE

APPROVED	CHECKED	DESIGNED	DWG	LEVEL	GENERAL TOLERANCE ±	MATERIAL	DATE

UNIT	SCALE	VISUAL	WELD SYMBOL	TOLERANCE	3-D MODEL	DRIVING MOTOR

A4 297x210mm