

SSF/SSH1505 V2

15" Resizing LCD, 1000 nits LED backlight, 1280x242 ultra wide aspect ratio 16:3

SSF/SSH1505 V2 is an innovative ultra-wide, sunlight readable, LED backlight LCD display. It provides LCD panel with specific ratios for digital signage, public transportation, exhibition hall, department store, vending machine and industrial applications. Incorporating with A.D. control board and backlight design, it is high brightness and sunlight readable panel, can display high-quality video with energy-efficient



KEY FEATURES

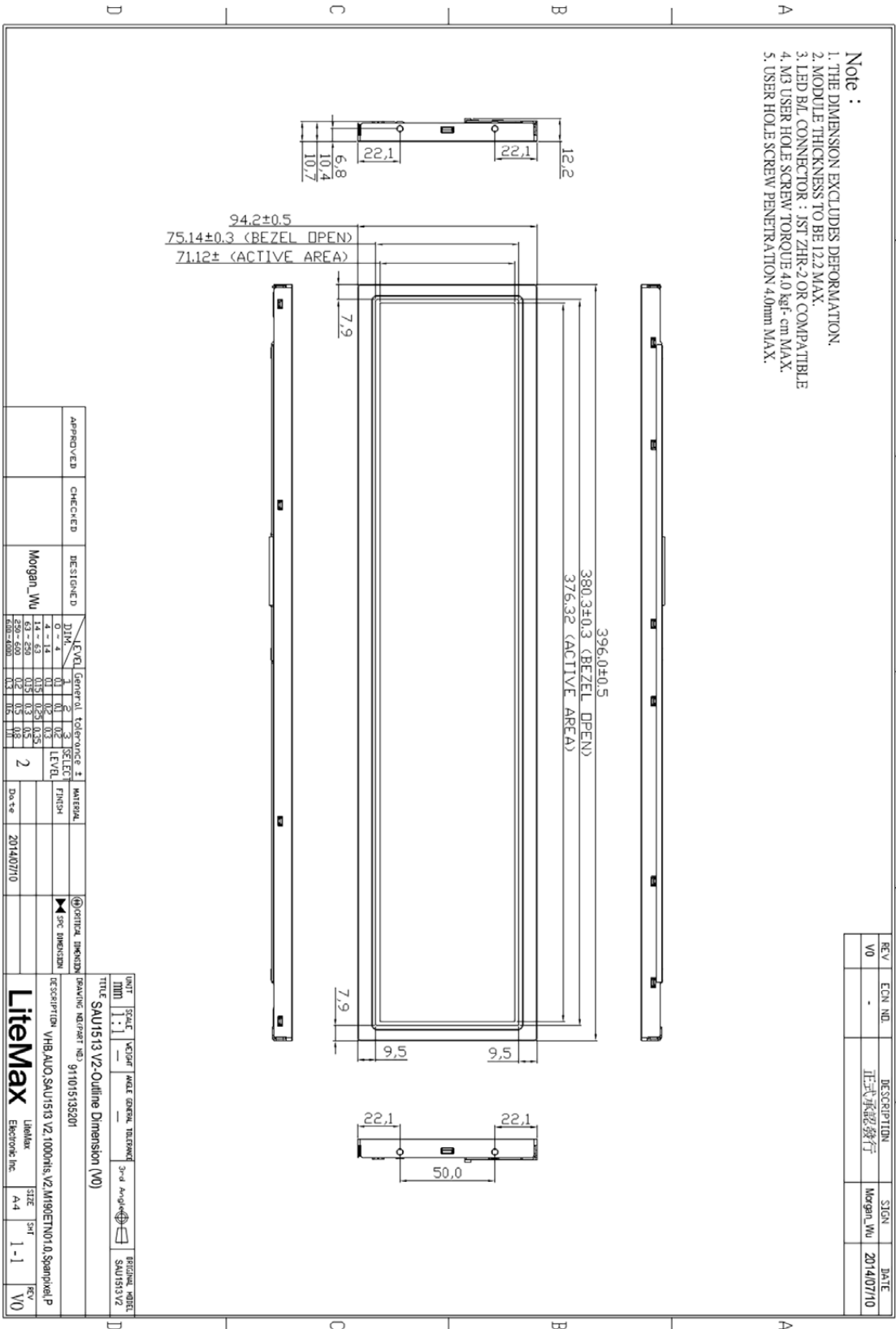
- Resizing LCD
- Ultra Wide Screen (16 : 3)
- Sunlight Readable
- LED Backlight
- High Brightness 1000 nits
- Low Power Consumption
- High Uniformity (90%)
- Wide Dimming
- Life Expectancy (70,000hrs)

SPECIFICATIONS

Model No.	SSF/SSH 1505 V2
Description	15.0" Resizing LCD, 1000 nits LED backlight, 1280x242
Display Area (mm)	376.3 x 71.2 mm
Brightness	1,000 cd/m2
Resolution	1280 x 242
Aspect Ratio	16 : 3
Contrast Ratio	1000:1
Pixel Pitch (mm)	0.294 x 0.294
Viewing Angle	+80°~-80°(H), +85°~-85°(V)
Display Colors	16.7M
Response Time (Typical)	5 ms
Sync	LVDS
Power Consumption	9W/W12
Dimensions (mm)	396 x 94.2 x 12.2
Weight (Net)	0.83 Kg
LED Driving Board	LID15A
Control Board (Optional)	AD2662GDMR
<input type="checkbox"/> AD2662GDMR	VGA+DVI+RS232
<input type="checkbox"/> Others	
F/R Control Button	<input type="checkbox"/> 5 key <input type="checkbox"/> 4 key
<input type="checkbox"/> 5 Key	Power Switch, Menu, Select (+,-), Auto
<input type="checkbox"/> 4 Key	Power Switch, Menu, Select (+,-)
OSD Menu	Brightness, Contrast, H/V Position, Color, Phase, Clock . . .
Optional	<input type="checkbox"/> AOT <input type="checkbox"/> Touch Screen

*Specifications are subject to change without notice. **All brands or product names are trademarks or registered trademarks of their respective companies.

SSF= Panel+ LED Driving Board • SSH= Panel+ LED Driving Board + AD Control Board



REV	ECN NO.	DESCRIPTION	SIGN	DATE
V0	-	正式承認發行	Morgan_Wu	2014/07/10

APPROVED	CHECKED	DESIGNED D	DATE
		Morgan_Wu	2014/07/10

LEVEL	General	tolerance	LEVEL	MATERIAL
0 - 4	0.1	0.2	0.5	ENGLISH
5 - 14	0.15	0.3	0.25	
15 - 20	0.2	0.3	0.35	
21 - 30	0.2	0.3	0.4	
31 - 40	0.2	0.3	0.5	
41 - 50	0.2	0.3	0.6	
51 - 60	0.2	0.3	0.8	
61 - 70	0.2	0.3	1.0	
71 - 80	0.2	0.3	1.2	
81 - 90	0.2	0.3	1.5	
91 - 100	0.2	0.3	2.0	

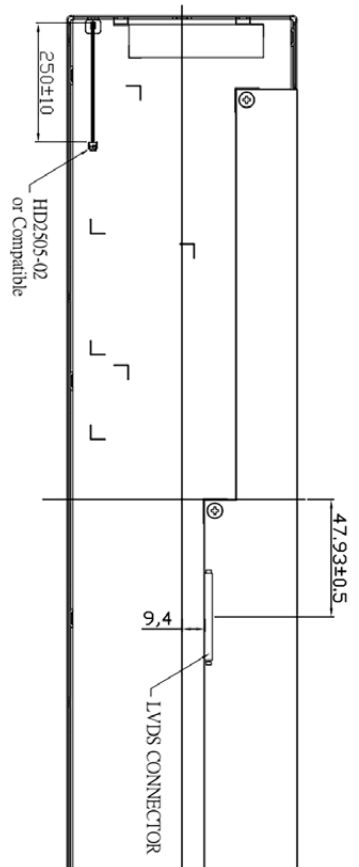
UNIT	SCALE	WEIGHT	MADE GENERAL TOLERANCE	3rd Angle Projection	ORIGINAL INSTRUMENT
MM	1:1	-	-	-	SAU1513 V2

TITLE	DRAWING NUMBER (NO.)	DESCRIPTION	SIZE	DATE
SAU1513 V2 Outline Dimension (V0)	911015135201	VHB,AUO,SAU1513 V2,1000HIS,V2,M90ETN010,Spanpanel,P	A4	1-1

DATE	2014/07/10
------	------------

1:1 297x210mm

- Note :**
1. THE DIMENSION EXCLUDES DEFORMATION.
 2. MODULE THICKNESS TO BE 12.2 MAX.
 3. LED B/L CONNECTOR : JST ZHR-2 OR COMPATIBLE
 4. M3 USER HOLE SCREW TORQUE 4.0 Kgf·cm MAX.
 5. USER HOLE SCREW PENETRATION 4.0mm MAX.



REV	ECN NO.	DESCRIPTION	SIGN	DATE
V0	-	正式承認發行	Morgan_Wu	2014/07/10

APPROVED	CHECKED	DESIGNED	LEVEL	General Tolerance	SELECT	MATERIAL	FINISH	DATE
		Morgan_Wu	2	0 - 4 4 - 14 14 - 49 49 - 125 125 - 250 250 - 500 500 - 600	0.1 0.1 0.15 0.2 0.25 0.3 0.4			2014/07/10

UNIT	SCALE	VEILED	INCL. GENERAL TOLERANCE	3rd Angle Projection	ORIGINAL MODEL
mm	1:1				SAU1513 V2
TITLE SAU1513 V2-Outline Dimension (V0)					
DRAWING NO./PART NO. 91101513S201					
DESCRIPTION VHB_AUO_SAU1513_V2_1000P/NIS_V2_M190ETN01_0_Spanhexel_P					
LibMax Electronic Inc.			SIZE A4	SHEET 1-1	REV V0

LibMax