

SSF1916-A / SSH1916-A

19.1" Resizing LCD Display, Brightness is 1200 nits, LED backlight, 1920x388 ultra wide aspect ratio 16:3.2

SSF/SSH 1916-A is an innovative ultra-wide, LED backlight LCD module. It provides LCD panel with specific ratios for digital signage, public transportation, exhibition hall, department store, and vending machine applications.



KEY FEATURES

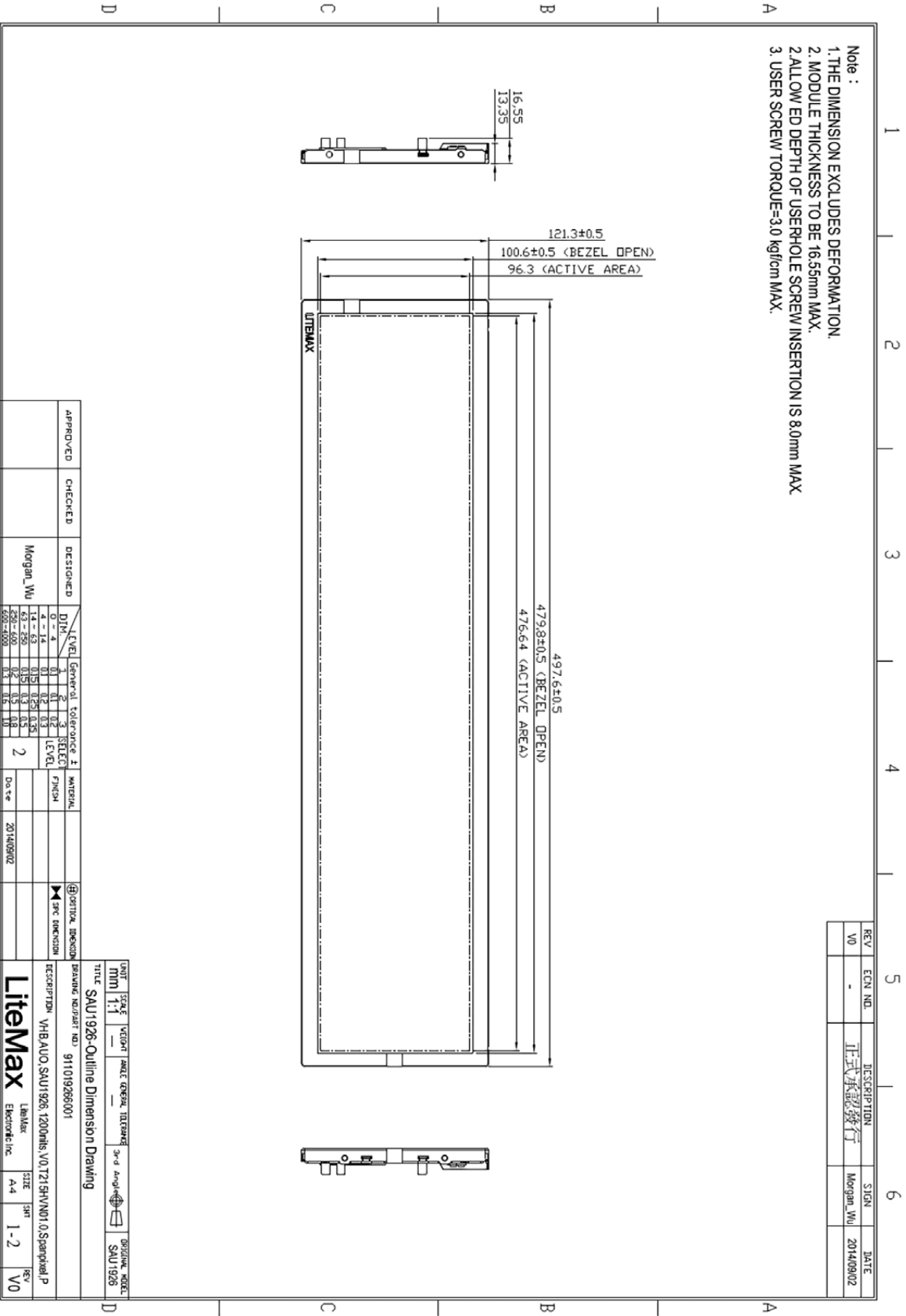
- Resizing LCD
- Ultra Wide Screen (16 : 3.2)
- LED Backlight
- High Brightness 1200nits
- Low Power Consumption
- Wide Viewing Angle
- High Uniformity
- Wide Dimming

SPECIFICATIONS

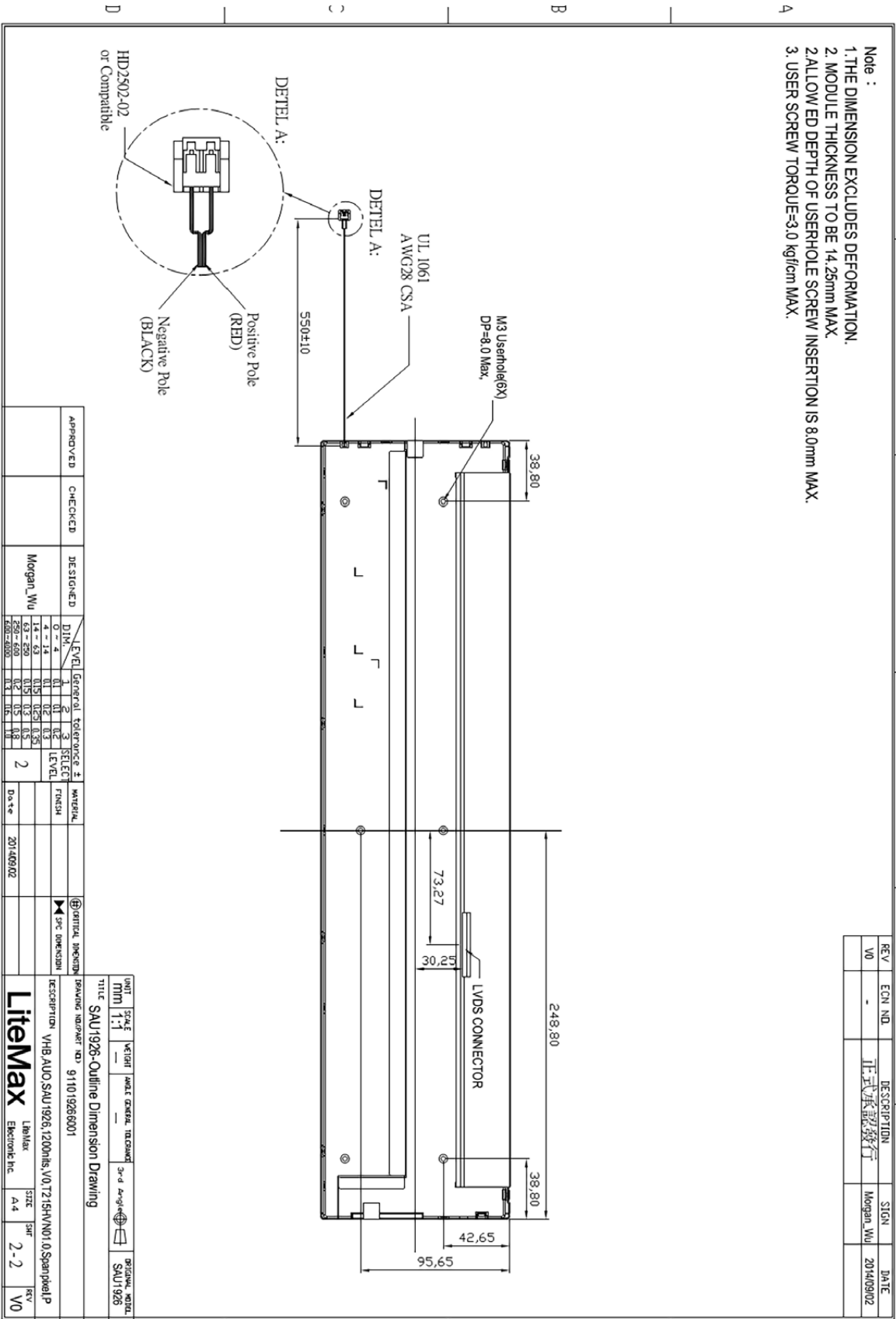
Model No.	SSF1916-A / SSH1916-A
Description	19.1" Resizing LCD Display, 1200nits, LED backlight, 1920x388
Display Area (mm)	476.6x 96.3 mm
Brightness	1200nits
Resolution	1920 x 388
Aspect Ratio	16 : 3.2
Contrast Ratio	3000:1
Pixel Pitch (mm)	0.248 x 0.248
Viewing Angle	178°(H), 178°(V)
Display Colors	16.7M
Response Time (Typical)	25 ms
Power Consumption	17.9W / 22.9W
Dimensions (mm)	497.6 x 121.3 x 16.55 mm
Weight (Net)	0.8 Kg
LED Driving Board	LID19A
Control Board (Optional)	<input type="checkbox"/> AD2662GD <input type="checkbox"/> AD2662GDHMVAR
<input type="checkbox"/> AD2662GD	VGA+DVI (Optional S-Video/ Component / Audio)
<input type="checkbox"/> AD2662GDHMVAR	VGA + DVI + HDMI (Optional AV/ S-Video / Component / Audio)
F/R Control Button	<input type="checkbox"/> 4 key <input type="checkbox"/> 5 key
<input type="checkbox"/> 4 Key	Power Switch, Menu, Select (+,-)
<input type="checkbox"/> 5 Key	Power Switch, Menu, Select (+,-), Auto
OSD Menu	Brightness, Contrast, H/V Position, Color, Phase, Clock . . .
Optional	<input type="checkbox"/> AOT <input type="checkbox"/> Touch Screen

*Specifications are subject to change without notice. **All brands or product names are trademarks or registered trademarks of their respective companies.

SSF= Panel+LED Driving Board • SSH= Panel+ LED Driving Board + AD Control Board



MECHANICAL DRAWING Unit: mm



REV	ECN NO.	DESCRIPTION	SIGN	DATE
V0	-	正式承認發行	Morgan_Wu	2014/09/02

APPROVED	CHECKED	DESIGNED	DWG. NO.	LEVEL	General	Tolerance	FINISH	MATERIAL
		Morgan_Wu	4-14	1	1	0.15	FINISH	
			63-250	2	2	0.25		
			630-600	3	3	0.5		
			630-600	4	4	0.8		

UNIT	SCALE	METHOD	DATE EXPIRE	ISSUE NO.	DATE	DESIGNER
MM	1:1			SAU1926		SAU1926

TITLE: SAU1926-Outline Dimension Drawing

DESCRIPTION: VHB-AUO.SAU1926, 1200mAh, V0T215H/V01.0, Sample/P

Litemax Electronic Inc. Lib/Mat: A4 2-2 REV: V0