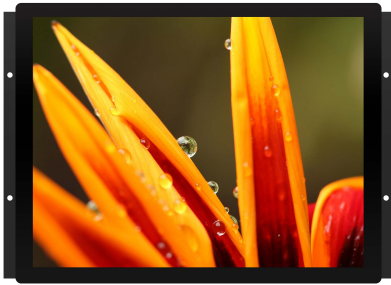


DLO1968-UTB-G01

19" TFT LCD, LED Backlight 1600nits, SXGA(1280x1024), Wide Temp.

19" TFT LCD multi-touch monitor has built-in 1600 nits high brightness for sunlight readability. The high level of brightness together with the optimal contrast ratio renders high quality images and enhances legibility. With its fast response time and LED backlight technology, the monitor brings remarkable display quality and durability for your applications. It is suitable for marine, military, medical, transportation, industrial and kiosk applications.



KEY FEATURES

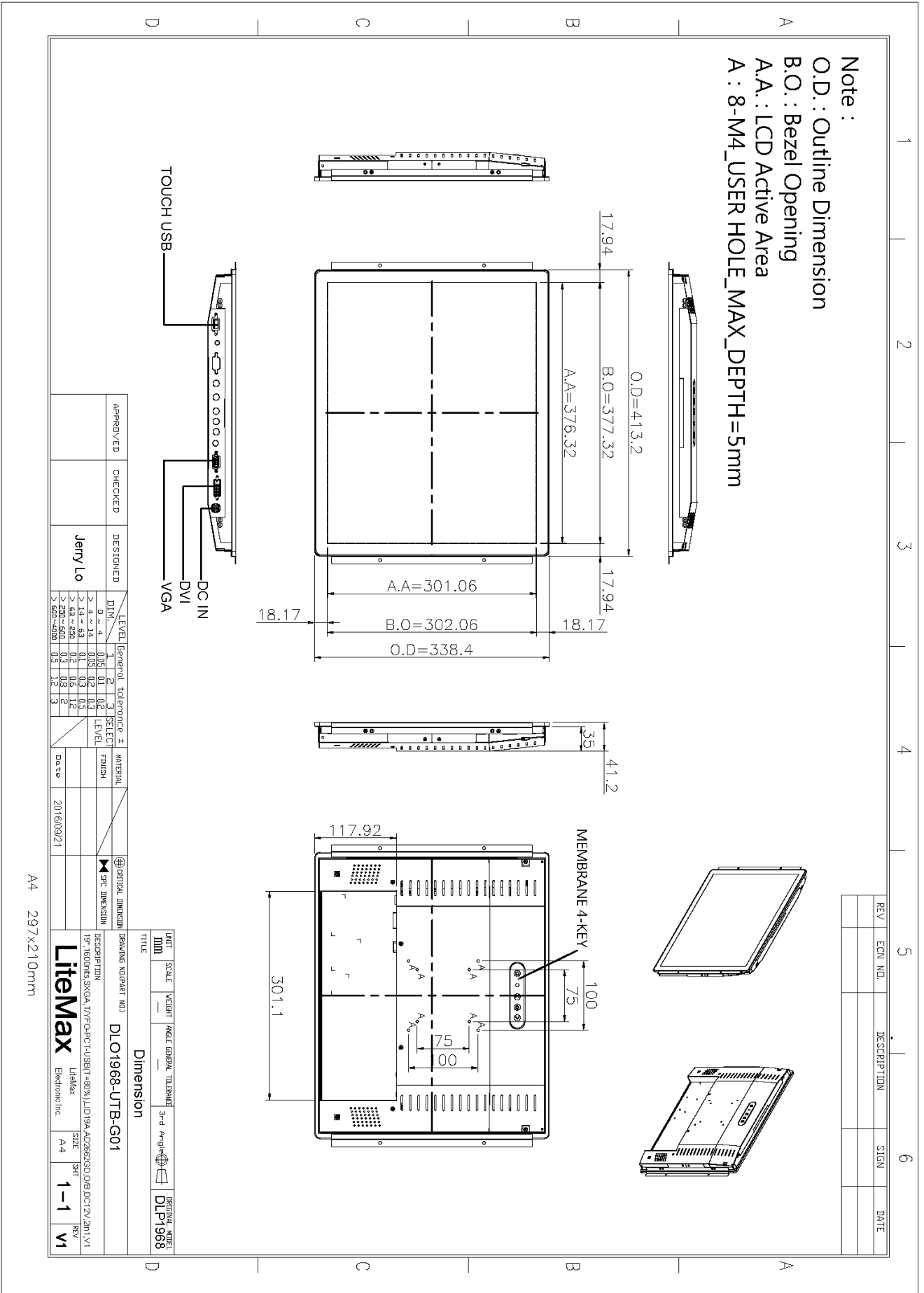
- Brightness: 1600nits
- LED Backlight
- High Shock & Vibration Resistance
- Low Power Consumption
- Auto-Brightness Sensor
- Low EMI Noise
- Wide Dimming
- Wide Temp.: -30~85
- BL MTBF: 100,000 hours

SPECIFICATIONS

Model No.	DLO1968-UTB-G01
Description	19" TFT LCD, LED Backlight, 1600nits, SXGA(1280x1024), Wide Temp.
Display Area (mm)	376.32(H) x 301.06(V)mm
Brightness	1600 cd/m ²
Resolution	1280x1024 (SXGA)
Contrast Ratio	1000 : 1
Pixel Pitch (mm)	0.294(H) x 0.294(V)
Viewing Angle	+85°~-85°(H), +80°~-80°(V)
Display Colors	16.7M
Response Time (Typical)	10ms
Power Consumption	43W
Dimensions (mm)	413.2x338.4x41.2mm
Weight (Net)	3.6kg
LED Driving Board	LID19A
Control Board (Optional)	<input type="checkbox"/> AD2662GD <input type="checkbox"/> AD2662GDVAR
<input type="checkbox"/> AD2662GD	VGA+DVI
<input type="checkbox"/> AD2662GDVAR	VGA+DVI (Optional AV/ S-Video/ Component / Audio)
F / R Control Button	<input type="checkbox"/> 4 Key <input type="checkbox"/> 5 Key
<input type="checkbox"/> 4 Key	Power Switch, Menu, Select (+,-),
<input type="checkbox"/> 5 Key	Power Switch, Menu, Select (+,-), Auto
OSD Menu	Brightness, Contrast, H/V Position, Color, Phase, Clock...
Optional	<input type="checkbox"/> AOT <input type="checkbox"/> Touch Screen

*Specifications are subject to change without notice. **All brands or product names are trademarks or registered trademarks of their respective companies.

DLD/DLO = Panel+ LED Driving Board + Control Board + Housing



Note :
 O.D. : Outline Dimension
 B.O. : Bezel Opening
 A.A. : LCD Active Area
 A : 8-M4_USER HOLE_MAX_DEPTH=5mm

REV	EQV. NO.	DESCRIPTION	SIGN	DATE

APPROVED	CHECKED	DESIGNED	LEVEL	General	tolerance	±	SELECT	MATERIAL	FINISH	CRITICAL DIMENSION	DESCRIPTION	DATE
		Jerry Lo	DIN	1	0.08	0.1	2					2016/09/21
			> 0.4 - 0.8	0.08	0.1	0.2	3					
			> 0.8 - 1.6	0.1	0.15	0.3						
			> 1.6 - 4.0	0.15	0.2	0.5						
			> 4.0 - 8.0	0.2	0.3	0.8						
			> 8.0 - 20.0	0.3	0.5	1.2						
			> 20.0 - 60.0	0.5	0.8	2						
			> 60.0 - 400.0	1.2	2	3						

A4 297x210mm

UNIT	SCALE	WEIGHT	PANEL GENERAL	TOLERANCE	3-D	ANGLE	GENERAL	DATE
MM							DLPT1968	

Dimension

TITLE	DRAWING NUMBER	NO.
	DL01968-UTB-G01	

DESCRIPTION
 19" 1600HS SVGA TV/FO-CT-USBIT(=80%) JLD19A AD2682SD OV/DC/2V, 2m 1V1
LiteMax
 LiteMax
 Electronic Inc.

SIZE	SHF	REV
A4	1-1	V1