

SSF3685-I / SSH3685-I V1

36.8" Resizing LCD, 1000 nits LED backlight, 1920 x 358 ultra-wide aspect ratio 16:2.9

The SSF/SSH3685-I is a 36.8 inch color TFT-LCD display with special aspect ratio 16:2.9 and wide resolution 1920 x 358. It is Litemax's Spanpixel series product which designed for high brightness 1000 nits with power efficiency LED backlight. It provides LCD panel with specific aspect ratios and sunlight readable for digital signage, public transportation, exhibition hall, department store, and vending machine.



KEY FEATURES

- Resizing LCD
- Ultra-Wide Screen (16 : 2.9)
- High Brightness 1000 nits
- Sunlight Readable
- LED Backlight
- Low Power Consumption
- Slim Bezel
- BL MTBF: 100,000 hours

SPECIFICATIONS

Model No.	SSF3685-I / SSH3685-I V1
Description	36.8" Resizing LCD, 1000 nits LED backlight, 1920x358
Display Area (mm)	919.3(H) x 171.4(V)
Brightness	1000 cd/m ²
Resolution	1920x358
Aspect Ratio	16 : 2.9
Contrast Ratio	7600 : 1
Pixel Pitch (mm)	0.4788(H) x 0.4788(V)
Pixel Pre Inch (PPI)	52
Viewing Angle	178°(H), 178°(V)
Color Saturation (NTSC)	81%
Display Colors	16.7M
Response Time (Typical)	9.5ms
Panel Interface	LVDS
AD Board Input Interface	VGA, DVI-D, HDMI
AD Board Input Power	DC12V
Power Consumption	22W(27 with AD Board)
OSD Key	4 Keys (Power Switch, Menu, +, -)
OSD Control	Brightness, Color, Contrast, Auto Turing, H/V Position...etc
Dimensions (mm)	960x 207.3 x 16
Bezel Size(U/B/L/R)	15.2/15.2/17.85/17.85mm
Weight (Net)	3.5 kg
Operating Temperature	0°C~50°C
Storage Temperature	-20°C~60°C

*Specifications are subject to change without notice. **All brands or product names are trademarks or registered trademarks of their respective companies.

SSF= Panel+LED Driving Board • SSH= Panel+ LED Driving Board + AD Control Board

MECHANICAL DRAWING Unit: mm

Note :

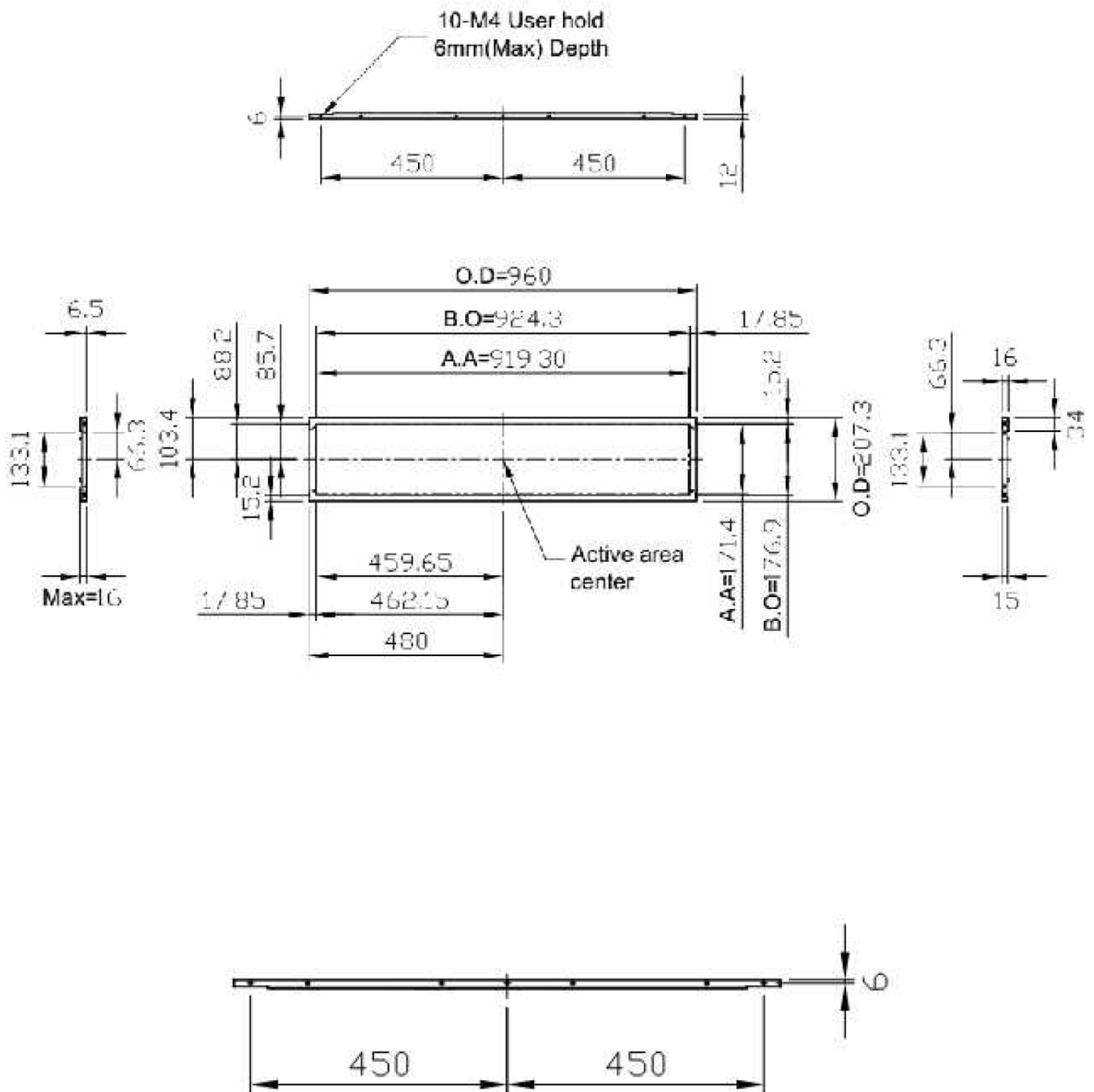
O.D : Outline Dimension

B.O : Bezel Opening

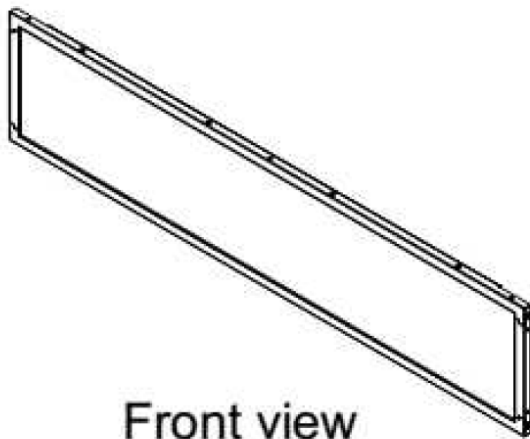
A.A : LCD Active Area

LVDS Conector:FCN WF23-402-5133

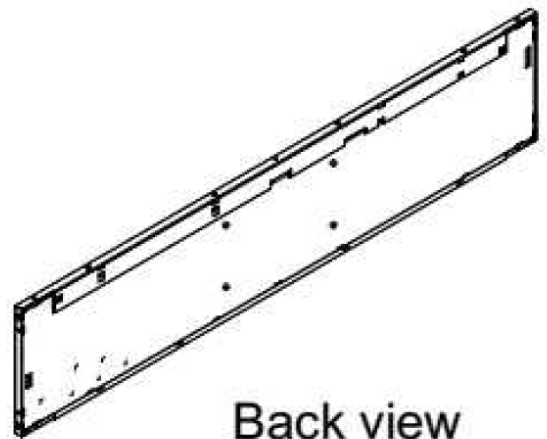
or P-TWO 137059-51221



MECHANICAL DRAWING Unit: mm



Front view



Back view

