

DLH7502-L

75" TFT LCD, 4500 nits LED backlight, UHD (3840x2160)

The DLH7502-L is a 75 inch industrial grade sunlight readable LCD with a high brightness of 4500 nits. It produces sharp images, crisp text, and lifelike colors. The Durapixel LED backlight technology ensures high reliability and low power consumption, suitable for outdoor, kiosk, factory automation, military, transportation, gaming applications, and so much more.



KEY FEATURES

- High Brightness 4500 nits
- Resolution 3840x2160
- Sunlight Readable
- High Contrast Ratio (3,000,000 : 1)
- Local Dimming
- HDR support
- Low Power Consumption
- LCD Blacking Defect Free (Hi-Tni 110°C)
- BL MTBF: 100,000 hours

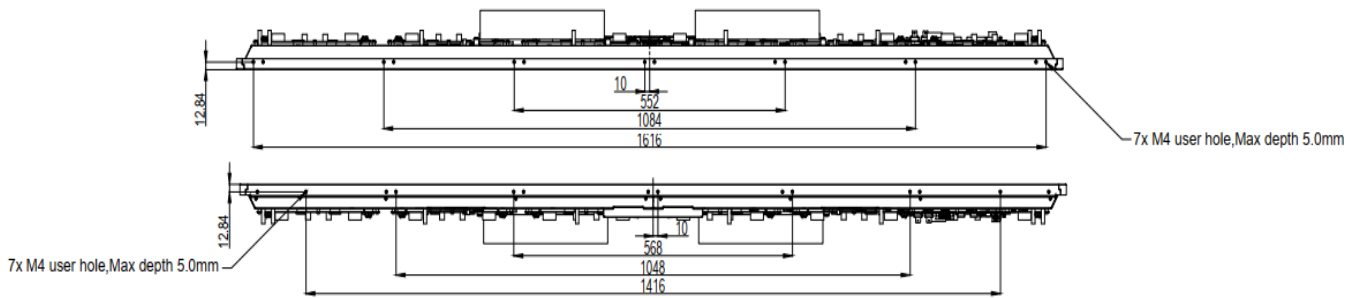
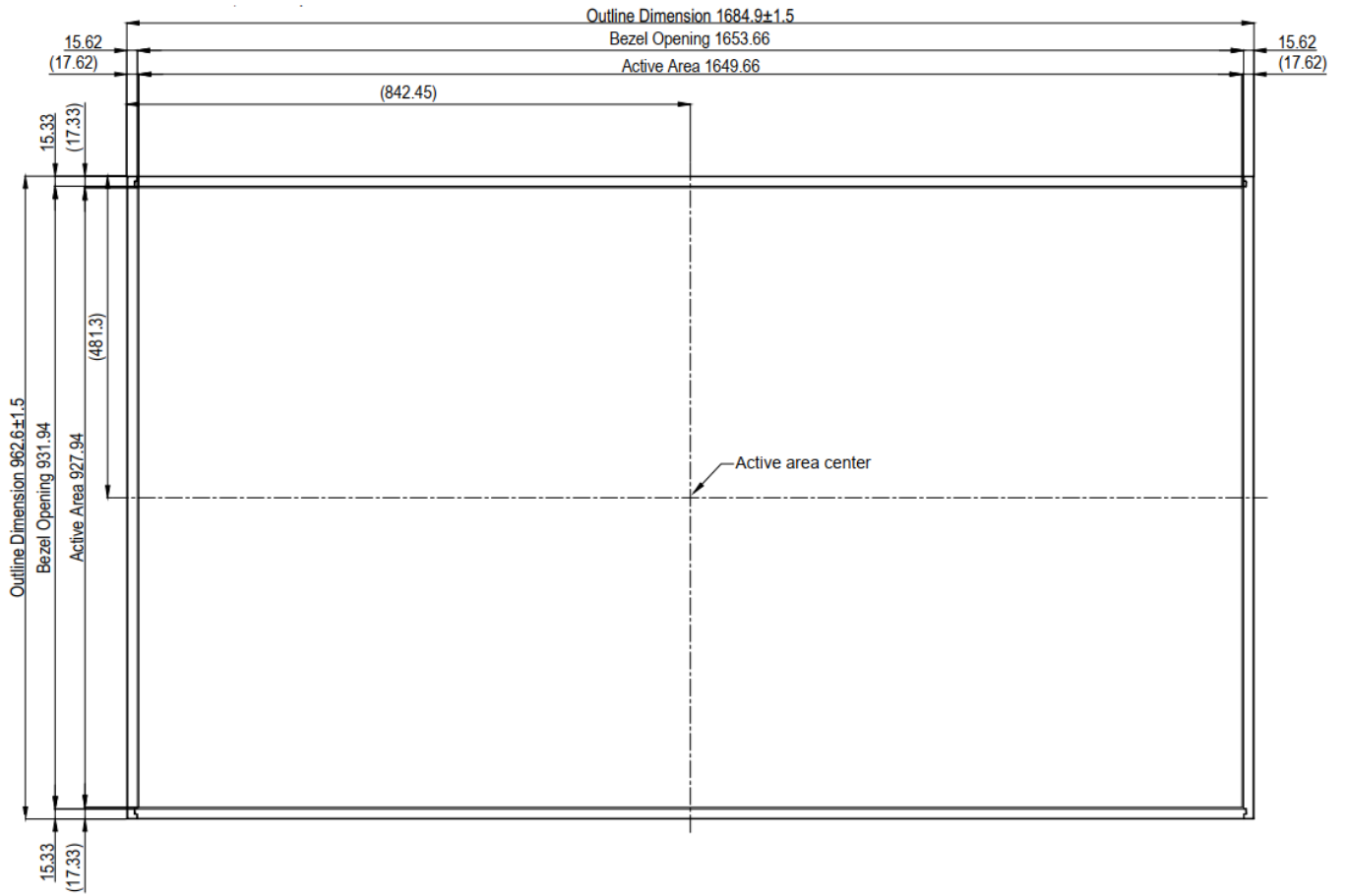
SPECIFICATIONS

Model No.	DLH7502-L
Description	75" TFT LCD, 4500 nits LED backlight, UHD (3840x2160)
Display Area (mm)	1649.66(H) x 927.94(V)
Brightness	4500 cd/m ²
Resolution	3840x2160
Aspect Ratio	16 : 9
Contrast Ratio	3,000,000 : 1
Pixel Pitch (mm)	0.429(H) x 0.429(V)
Pixel Per Inch (PPI)	59
Viewing Angle	178°(H),178°(V)
Color Saturation (NTSC)	81%
Display Colors	1.07G
Response Time (Typical)	8ms
Panel Interface	V-by-One
AD Board Input Interface	DVI-D, HDMI x2, DP x2
AD Board Input Power	AC100~240V
Power Consumption	730W
OSD Key	5 Keys (Power Switch, Menu, +, Exit, -)
OSD Control	Brightness, Color, Contrast, Auto Turing, H/V Position...etc
Dimensions (mm)	1684.9 x 962.6 x 99.19
Bezel Size(U/B/L/R)	15.33/15.33/15.62/15.62 mm
Weight (Net)	32 kg
Operating Temperature	0 °C ~ 50 °C
Storage Temperature	-20 °C ~ 60 °C

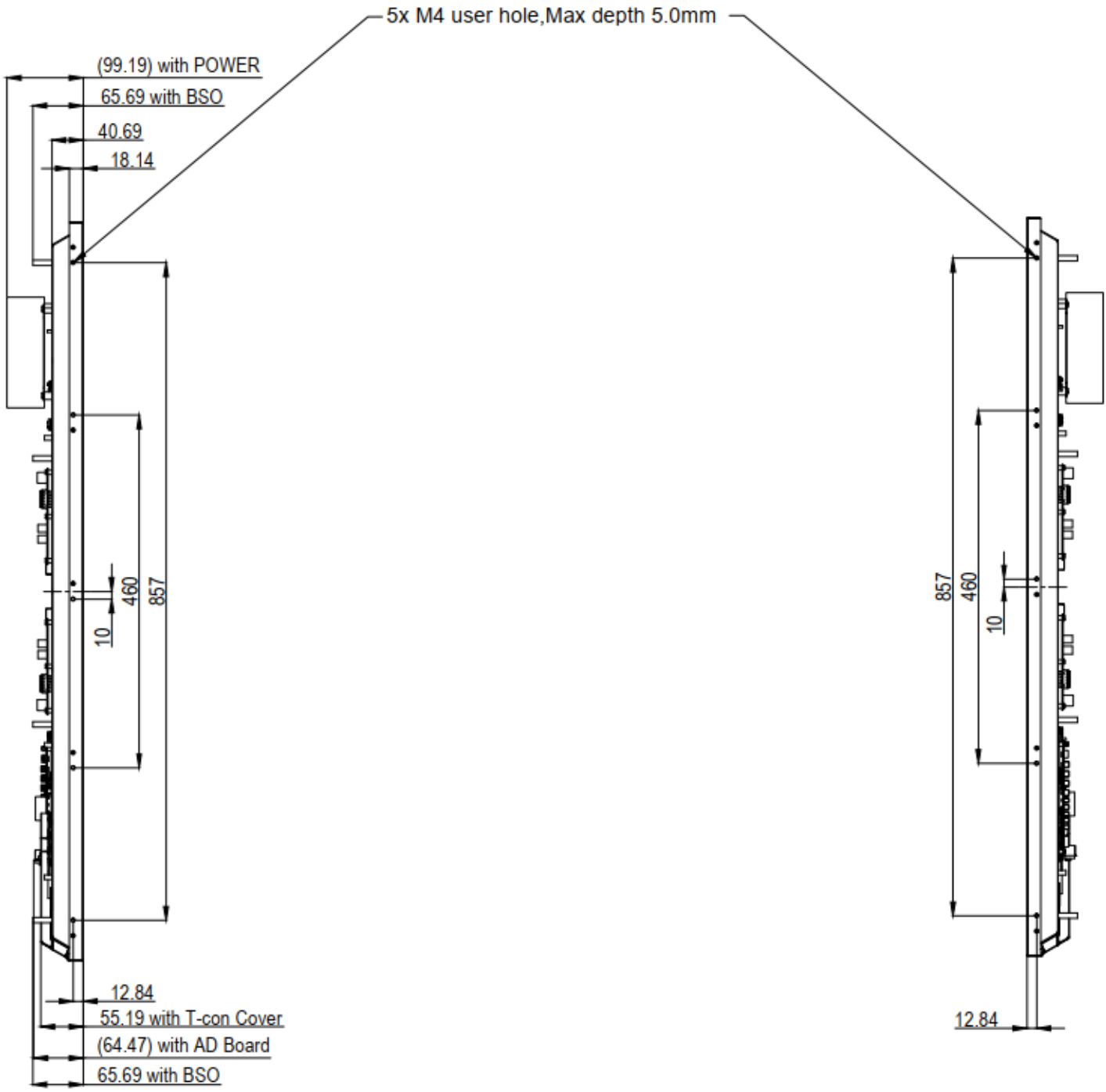
*Specifications are subject to change without notice. **All brands or product names are trademarks or registered trademarks of their respective companies.

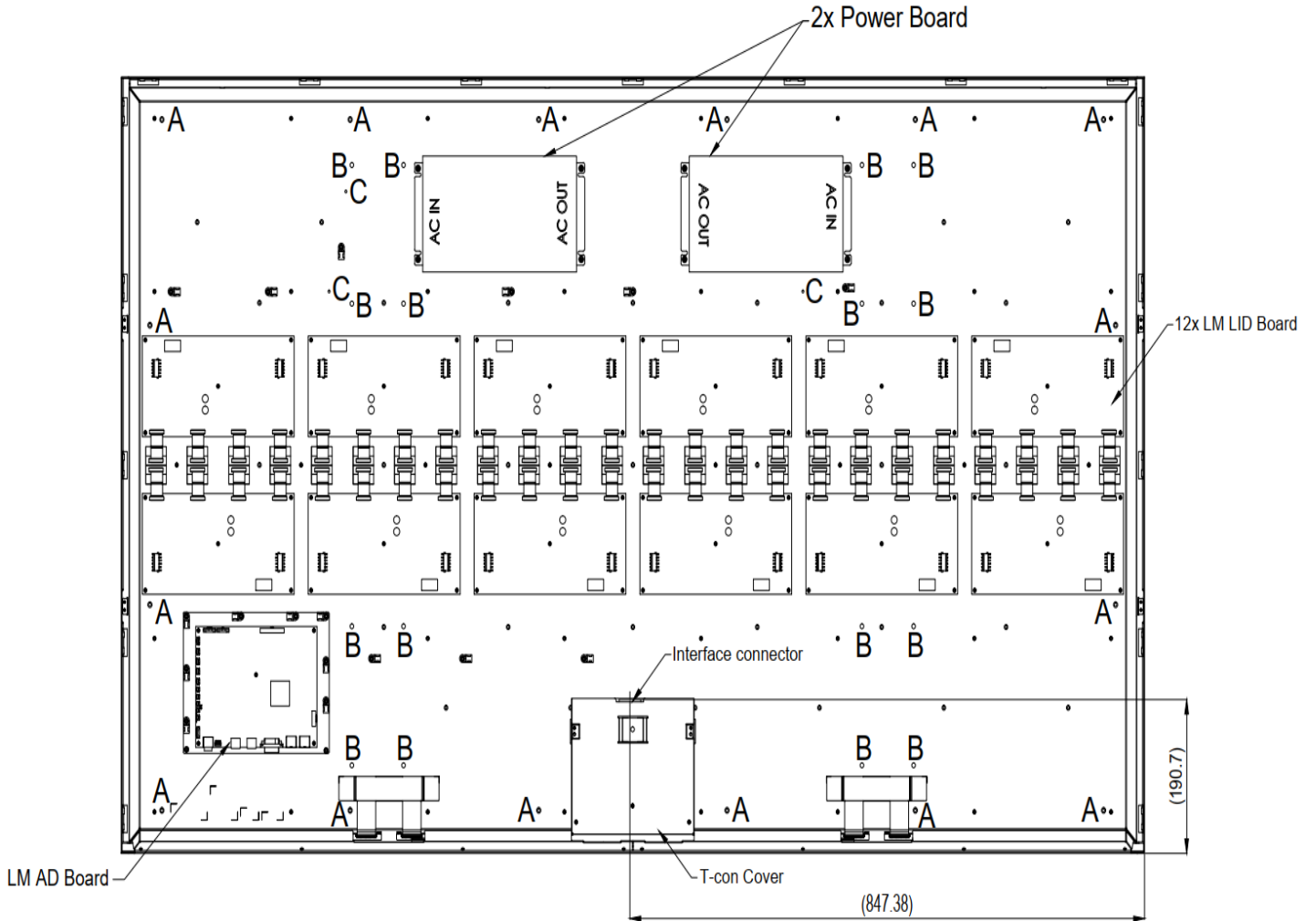
DLF= Panel + LED Driving Board

DLH= Panel + LED Driving Board + AD Control Board



Note:
 1."()" marks the reference dimension





Note:

A	M4-BSO, 25.0H	16
B	M6-FH, 10.0H	16
C	M3-FH, 6.0H	3